

Product datasheet for **TA392598M**

EIF3S3 (EIF3H) Rabbit Polyclonal Antibody

Product data:

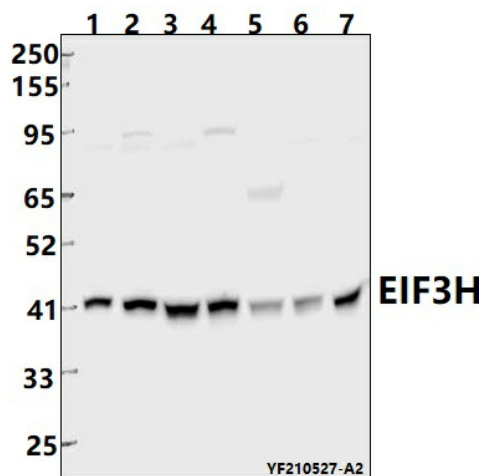
Product Type:	Primary Antibodies
Applications:	IF, IHC, WB
Recommended Dilution:	WB 1:500 - 1:2000 IHC 1:50 - 1:200 IF 1:50 - 1:200
Reactivity:	Human, Rat, Mouse
Host:	Rabbit
Isotype:	IgG
Clonality:	Polyclonal
Immunogen:	Synthetic peptide, corresponding to Human EIF3H.
Specificity:	EIF3H polyclonal antibody detects endogenous levels of EIF3H protein.
Formulation:	Rabbit IgG, 1mg/ml in PBS with 0.02% sodium azide, 50% glycerol, pH7.2
Concentration:	1mg/ml
Conjugation:	Unconjugated
Storage:	Store at 4°C short term. Aliquot and store at -20°C long term. Avoid freeze-thaw cycles.
Stability:	1 year
Predicted Protein Size:	~ 40 kDa
Gene Name:	eukaryotic translation initiation factor 3 subunit H
Database Link:	Entrez Gene 8667 Human O15372
Background:	Component of the eukaryotic translation initiation factor 3 (eIF-3) complex, which is required for several steps in the initiation of protein synthesis. The eIF-3 complex associates with the 40S ribosome and facilitates the recruitment of eIF-1, eIF-1A, eIF-2:GTP:methionyl-tRNA ⁱ and eIF-5 to form the 43S preinitiation complex (43S PIC). The eIF-3 complex stimulates mRNA recruitment to the 43S PIC and scanning of the mRNA for AUG recognition. The eIF-3 complex is also required for disassembly and recycling of post-termination ribosomal complexes and subsequently prevents premature joining of the 40S and 60S ribosomal subunits prior to initiation.
Synonyms:	eIF-3-gamma; eIF3 p40 subunit; EIF3H; eIF3h; EIF3S3; Eukaryotic translation initiation factor 3 subunit 3; Eukaryotic translation initiation factor 3 subunit H



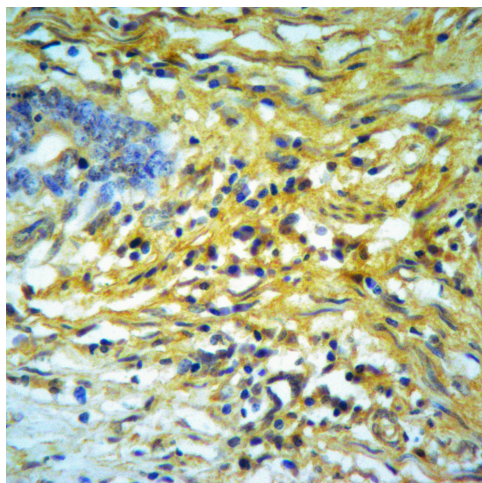
[View online »](#)

Note: For research use only, not for use in diagnostic procedure.

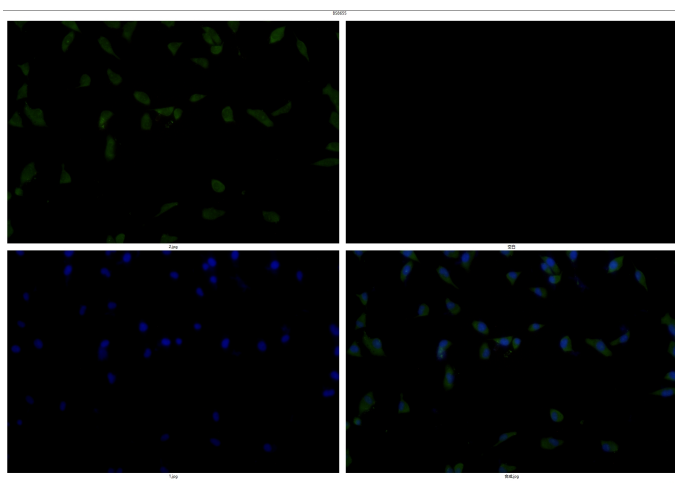
Product images:



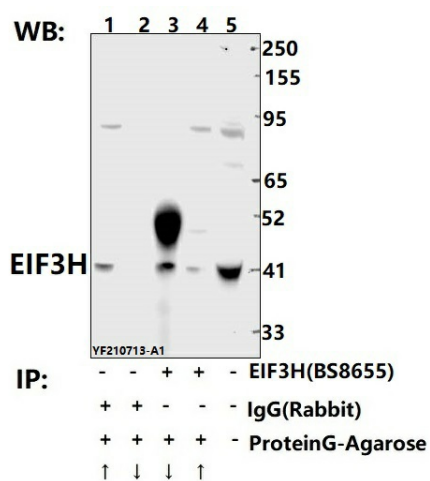
Western blot (WB) analysis of EIF3H polyclonal antibody at 1:5000 dilution Lane1:EC9706 whole cell lysate(40ug) Lane2:PC3 whole cell lysate(40ug) Lane3:Jurkat whole cell lysate(40ug) Lane4:The Pancreas tissue lysate of Mouse(40ug) Lane5:The Thymus tissue lysate of Rat(40ug) Lane6:The Testis tissue lysate of Mouse(40ug) Lane7:The Brain tissue lysate of Rat(40ug)



Immunohistochemistry of paraffin-embedded Human Colorectal cancer using EIF3H antibody at dilution of 1:50.



Immunofluorescence analysis of PC3 cells using EIF3H antibody at dilution of 1:50.



Immunoprecipitation of Jurkat cell lysates using EIF3H pAb (Sephacose Bead Conjugate)#BD0048 (lane 3 and lane 4) and Nonspecific IgG Control (Sephacose Bead Conjugate)#BD0048 (lane 1 and lane 2) .Lane 5 is 30% input. The western blot was probed using EIF3H pAb #[TA392598].