

Product datasheet for **TA392597**

Beclin 1 (BECN1) Rabbit Polyclonal Antibody

Product data:

Product Type:	Primary Antibodies
Applications:	IF, WB
Recommended Dilution:	WB: 1:1000~1:2000 IF: 1:50~1:200
Reactivity:	Human, Rat, Mouse
Host:	Rabbit
Isotype:	IgG
Clonality:	Polyclonal
Immunogen:	Synthetic peptide, corresponding to Human Beclin 1.
Specificity:	Beclin 1(R238) polyclonal antibody detects endogenous levels of Beclin 1 protein.
Formulation:	Rabbit IgG, 1mg/ml in PBS with 0.02% sodium azide, 50% glycerol, pH7.2
Concentration:	1mg/ml
Conjugation:	Unconjugated
Storage:	Store at 4°C short term. Aliquot and store at -20°C long term. Avoid freeze-thaw cycles.
Stability:	1 year
Predicted Protein Size:	~ 51 kDa
Gene Name:	beclin 1
Database Link:	Entrez Gene 8678 Human Q14457



[View online »](#)

Background:

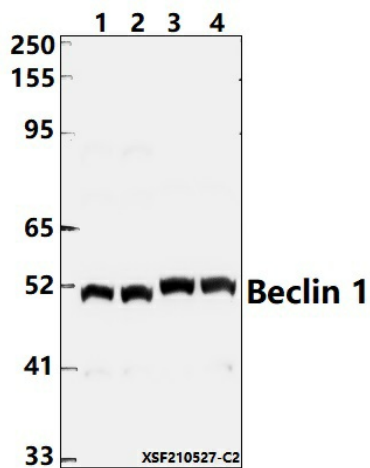
BECN1 (beclin 1) is a coiled-coil protein that has been implicated as an inhibitor of tumorigenesis. BECN1, which associates with Bcl-2, plays a significant role in autophagy. Autophagy is the degradation of cellular proteins in the lysosomes, and when this pathway is suppressed, cell growth is deregulated. Autophagy is controlled by the same signal transduction pathway that induces the phosphorylation of the ribosomal protein S6, and both are mediated via amino acids. BECN1 expression in various carcinoma cell lines, such as MCF7, is low, whereas it is ubiquitously expressed in normal breast tissue. In transfected MCF7 cells, BECN1 complements autophagocytosis and, subsequently, inhibits cellular proliferation. Additionally, BECN1 shares structural similarity to the yeast autophagy gene product, APG6, and was one of the first mammalian proteins discovered to mediate autophagy.

Synonyms:

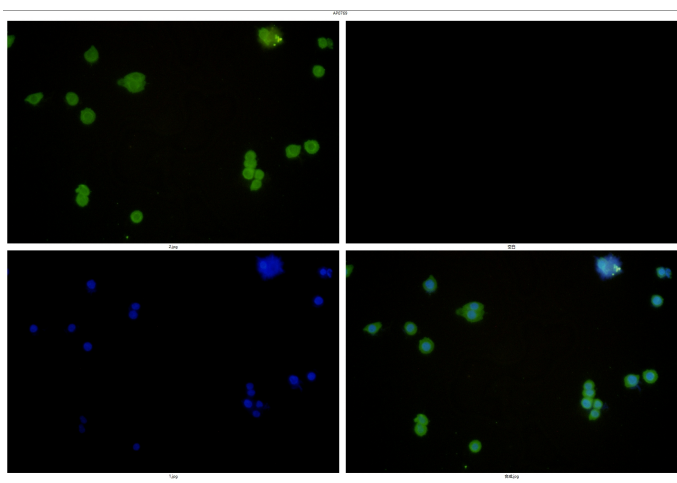
APG6; ATG 6; ATG6; ATG6 autophagy related 6 homolog; Bcl-2-interacting protein beclin; Beclin-1; Beclin1; Beclin 1 (coiled coil moesin like BCL2 interacting protein); Beclin 1 autophagy related; BECN 1; BECN1; Coiled-coil myosin-like BCL2-interacting protein; Coiled coil myosin like BCL2 interacting protein; GT197; Protein GT197 antibody

Note:

For research use only, not for use in diagnostic procedure.

Product images:

Western blot (WB) analysis of Beclin 1 polyclonal antibody at 1:1000 dilution. Lane 1: MCF-7 whole cell lysate (40ug); Lane 2: HEK293T whole cell lysate (40ug); Lane 3: The Brain tissue lysate of Mouse (40ug); Lane 4: The Brain tissue lysate of Rat (40ug).



Immunofluorescence analysis of MCF-7 cells using Beclin 1 (R238) antibody at dilution of 1:50.