

Product datasheet for **TA392596M**

IKK beta (IKKB) Rabbit Polyclonal Antibody

Product data:

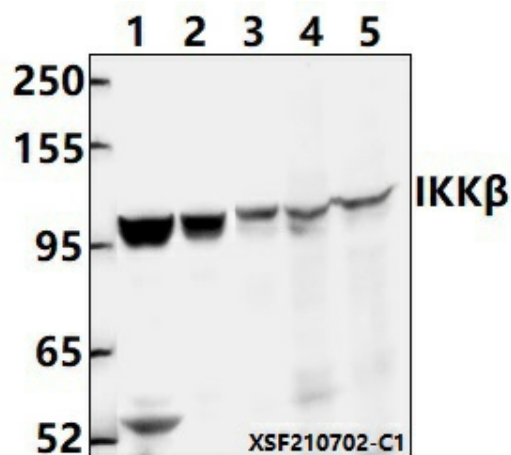
Product Type:	Primary Antibodies
Applications:	IF, WB
Recommended Dilution:	WB: 1:2000~1:5000 IF: 1:50~1:200
Reactivity:	Human, Mouse, Rat
Host:	Rabbit
Isotype:	IgG
Clonality:	Polyclonal
Immunogen:	Synthetic peptide, corresponding to Human IKK β .
Specificity:	IKK β (Y188) polyclonal antibody detects endogenous levels of IKK β protein.
Formulation:	Rabbit IgG, 1mg/ml in PBS with 0.02% sodium azide, 50% glycerol, pH7.2
Concentration:	1mg/ml
Conjugation:	Unconjugated
Storage:	Store at 4°C short term. Aliquot and store at -20°C long term. Avoid freeze-thaw cycles.
Stability:	1 year
Predicted Protein Size:	~ 96 kDa
Gene Name:	inhibitor of kappa light polypeptide gene enhancer in B-cells, kinase beta
Database Link:	Entrez Gene 3551 Human O14920
Background:	<p>The NF-κB/Rel transcription factors are present in the cytosol in an inactive state, complexed with the inhibitory IκB proteins. Most agents that activate NF-κB do so through a common pathway based on phosphorylation-induced, proteasome-mediated degradation of IκB. The key regulatory step in this pathway involves activation of a high molecular weight IκB kinase (IKK) complex whose catalysis is generally carried out by three tightly associated IKK subunits. IKKα and IKKβ serve as the catalytic subunits of the kinase and IKKγ serves as the regulatory subunit. Activation of IKK depends upon phosphorylation at Ser177 and Ser181 in the activation loop of IKKβ (Ser176 and Ser180 in IKKα), which causes conformational changes, resulting in kinase activation.</p>

[View online »](#)

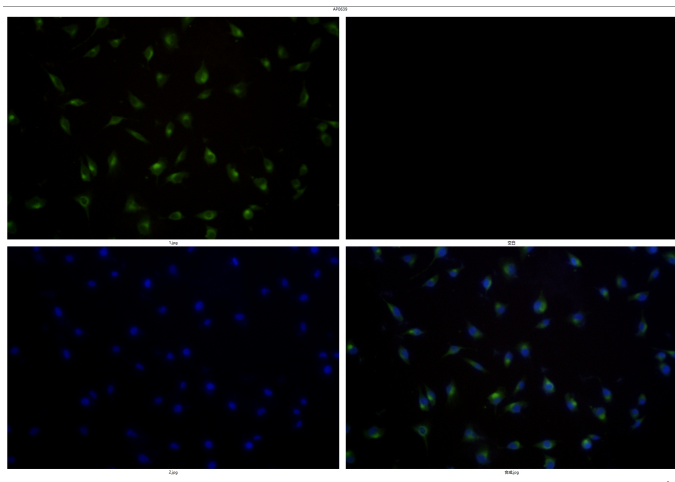
Synonyms: I-kappa-B-kinase beta; I-kappa-B kinase 2; IKBKB; Ikbkb; IKK-B; IKK-beta; IKK2; IKKB; Inhibitor of nuclear factor kappa-B kinase subunit beta; NFKB1KB; Nuclear factor NF-kappa-B inhibitor kinase beta; Serine/threonine protein kinase IKBKB

Note: For research use only, not for use in diagnostic procedure.

Product images:



Western blot (WB) analysis of IKK β (Y188) polyclonal antibody at 1:2000 dilution Lane1:U-87MG whole cell lysate(40ug) Lane2:PC3 whole cell lysate(40ug) Lane3:AML-12 whole cell lysate(40ug) Lane4:C6 whole cell lysate(40ug) Lane5:HCT116 whole cell lysate(40ug)



Immunofluorescence analysis of PC3 cells using IKK β (Y188) antibody at dilution of 1:50.