

## Product datasheet for **TA392593M**

### Calcineurin A (PPP3CA) Rabbit Polyclonal Antibody

#### Product data:

Product Type:	Primary Antibodies
Applications:	IF, WB
Recommended Dilution:	WB:1:2000~1:5000 IF: 1:50~1:200
Reactivity:	Human
Host:	Rabbit
Isotype:	IgG
Clonality:	Polyclonal
Immunogen:	Recombinant protein.
Specificity:	Calcineurin A polyclonal antibody detects endogenous levels of Calcineurin A protein.
Formulation:	Rabbit IgG, 1mg/ml in PBS with 0.02% sodium azide, 50% glycerol, pH7.2
Concentration:	1mg/ml
Conjugation:	Unconjugated
Storage:	Store at 4°C short term. Aliquot and store at -20°C long term. Avoid freeze-thaw cycles.
Stability:	1 year
Predicted Protein Size:	~ 59 kD
Gene Name:	protein phosphatase 3 catalytic subunit alpha
Database Link:	<a href="#">Entrez Gene 5530 Human Q08209</a>

**Background:** In eukaryotes, the phosphorylation and dephosphorylation of proteins on serine and threonine residues is an essential means of regulating a broad range of cellular functions including division, homeostasis and apoptosis. A group of proteins that are intimately involved in this process are the protein phosphatases. In general, the protein phosphatase (PP) holoenzyme is a trimeric complex composed of a regulatory subunit, a variable subunit and a catalytic subunit. Four major families of protein phosphatase catalytic subunit have been identified, designated PP1, PP2A, PP2B and PP2C. An additional protein phosphatase catalytic subunit, PPX (also known as PP4), is a putative member of a novel PP family. The PP2B family comprises subfamily members PP2B-A $\alpha$ , PP2B-A $\beta$  and PP2B-A $\gamma$ . Two additional regulatory subunits been identified, designated PP2B-B1 and PP2B-B2.

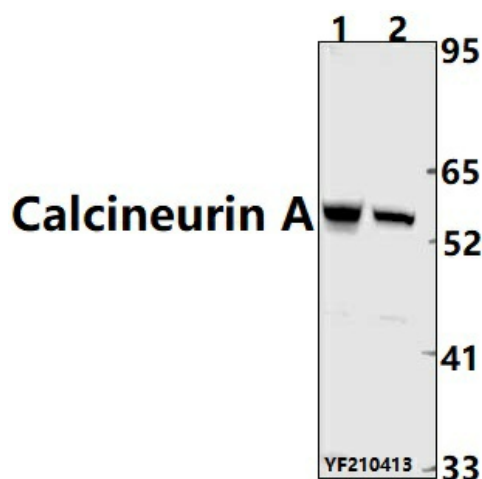

[View online »](#)

**Synonyms:**

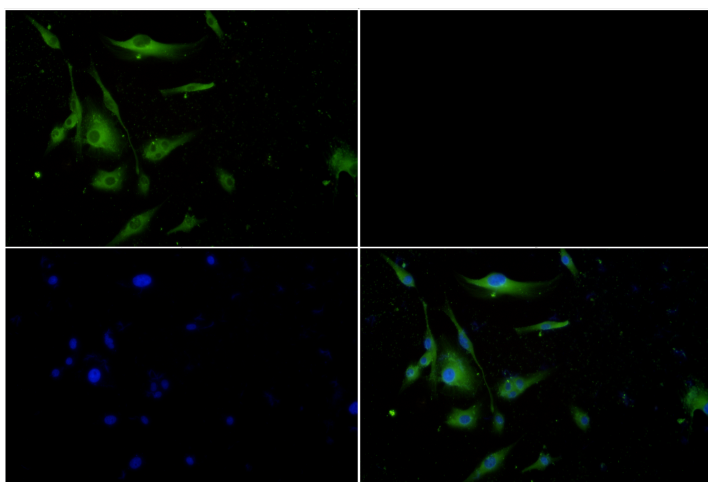
CALNA1; CAM-PRP catalytic subunit; CAM PRP catalytic subunit; CCN 1; CCN1; CNA; CNA1; CNA 1; CNA alpha; PP2BA; PPP2B; PPP3CA, Alpha isoform formerly PPP2B, Calcineurin A alpha, Calcineurin A1, CalcineurinA, Calmodulin dependent calcineurin A subunit alpha isoform, Calmodulin-dependent calcineurin A subunit alpha isoform, CALN, CALNA 1, CALNA; Ppp3ca, Protein phosphatase 2B catalytic subunit; Protein phosphatase 3 (formerly 2B) catalytic subunit alpha isoform; Protein phosphatase 3 catalytic subunit alpha isoform PPP3CA; Protein phosphatase 3 catalytic subunit alpha isozyme; Serine/threonine protein phosphatase 2B catalytic subunit alpha isoform

**Note:**

For research use only, not for use in diagnostic procedure.

**Product images:**


Western blot (WB) analysis of Calcineurin A pAb at 1:2000 dilution Lane1:EC9706 whole cell lysate(40ug) Lane2:U-87MG whole cell lysate(40ug)



Immunofluorescence analysis of U-87MG cells using Calcineurin A antibody at dilution of 1:50.