

Product datasheet for **TA392591S**

SQSTM1 Rabbit Polyclonal Antibody

Product data:

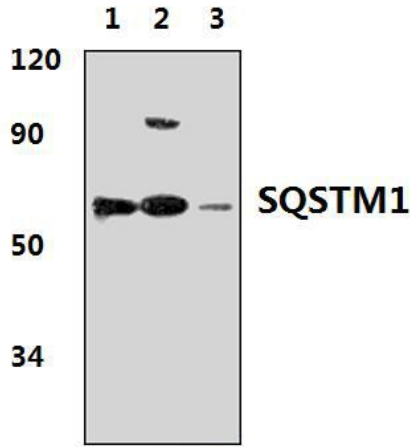
Product Type:	Primary Antibodies
Applications:	WB
Recommended Dilution:	WB: 1:500~1:1000 IF: 1:50~1:200 IHC: 1:50~1:200 IP: 1:50~1:200
Reactivity:	Human, Mouse, Rat
Host:	Rabbit
Isotype:	IgG
Clonality:	Polyclonal
Immunogen:	Recombinant full length Human SQSTM1.
Specificity:	SQSTM1 polyclonal antibody detects endogenous levels of SQSTM1 protein.
Formulation:	Rabbit IgG, 1mg/ml in PBS with 0.02% sodium azide, 50% glycerol, pH7.2
Concentration:	1mg/ml
Conjugation:	Unconjugated
Storage:	Store at 4°C short term. Aliquot and store at -20°C long term. Avoid freeze-thaw cycles.
Stability:	1 year
Predicted Protein Size:	~ 60 kDa
Gene Name:	sequestosome 1
Database Link:	Entrez Gene 8878 Human Q13501
Background:	The chronic focal skeletal disorder, Paget's disease of bone, affects 2-3% of the population over the age of 60 years. Paget's disease is characterized by increased bone resorption by osteoclasts, followed by abundant new bone formation that is of poor quality. The disease leads to several complications including bone pain and deformities, as well as fissures and fractures. Mutations in the ubiquitin-associated (UBA) domain of the Sequestosome 1 protein (SQSTM1), also designated p62 or ZIP, commonly cause Paget's disease since the UBA is necessary for aggregate sequestration and cell survival.
Synonyms:	EBI3-associated protein of 60 kDa; EBIAP; ORCA; OSIL; p60; Phosphotyrosine-independent ligand for the Lck SH2 domain of 62 kDa; Sequestosome-1; SQSTM1; Ubiquitin-binding protein p62



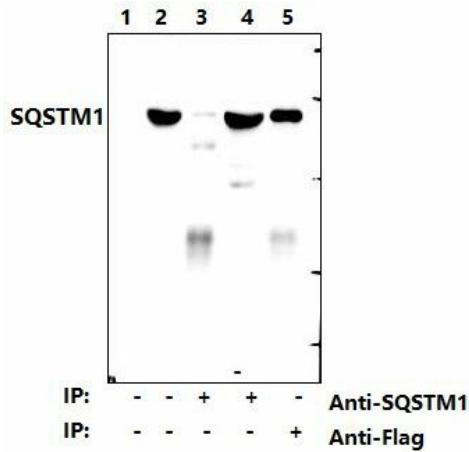
[View online »](#)

Note: For research use only, not for use in diagnostic procedure.

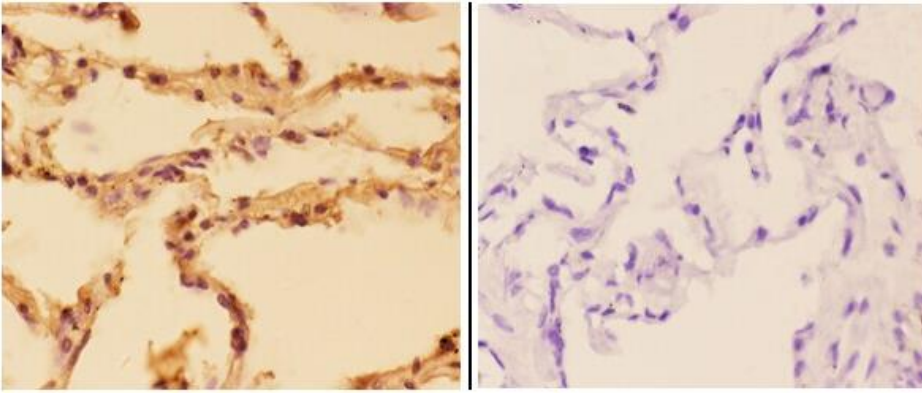
Product images:



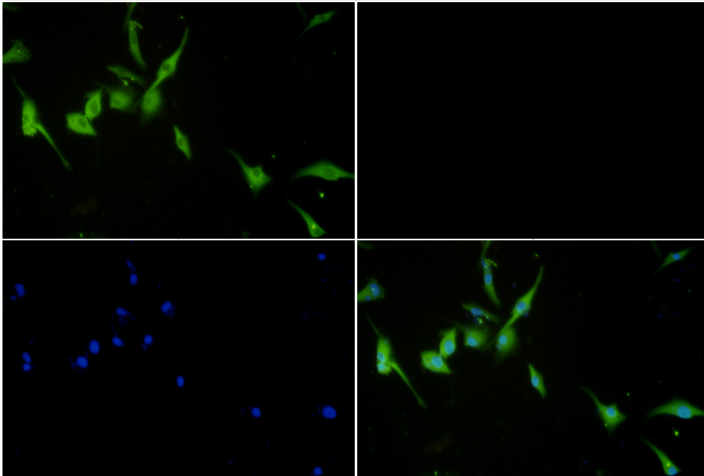
Western blot (WB) analysis of SQSTM1 polyclonal antibody at 1:500 dilution Lane1:HeLa whole cell lysate(40µg) Lane2:NIH-3T3 whole cell lysate(30µg) Lane3:PC12 whole cell lysate(40µg)



Western blot (WB) analysis of SQSTM1 pAb at 1:500 dilution Lane1:HEK293T whole cell lysate ,untransfected Lane2:HEK293T whole cell lysate , transfected with pcDNA3.1-HA-Flag-p62(human) Lane3:HEK293T whole cell lysate , transfected with pcDNA3.1-HA-Flag-p62(Anti-SQSTM1, IP) Lane4:HEK293T whole cell lysate , transfected with pcDNA3.1-HA-Flag-p62(Anti-SQSTM1, IP,supernatant) Lane5:HEK293T whole cell lysate , transfected with pcDNA3.1-HA-Flag-p62(Anti-Flag, IP)



Immunohistochemistry (IHC) analyzes of SQSTM1 pAb in paraffin-embedded human lung carcinoma tissue at 1:50, showing cytoplasm staining. Negative control (the right) Using PBS instead of primary antibody, secondary antibody is Goat Anti-Rabbit IgG-biotin followed by avidin-peroxidase.



Immunofluorescence analysis of U-8MG cells using SQSTM1 antibody at dilution of 1:50.