

## Product datasheet for **TA392589**

### STAT3 Rabbit Polyclonal Antibody

#### Product data:

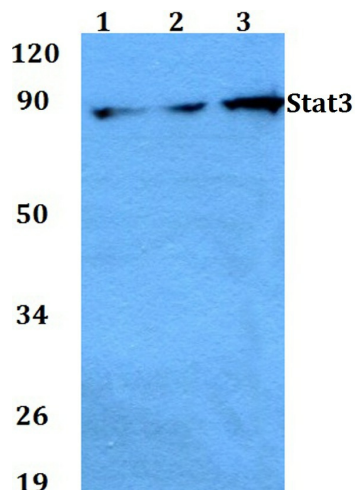
Product Type:	Primary Antibodies
Applications:	IF, WB
Recommended Dilution:	WB:1:500~1:1000 IF: 1:50~1:200
Reactivity:	Human, Mouse, Rat
Host:	Rabbit
Isotype:	IgG
Clonality:	Polyclonal
Immunogen:	Synthetic peptide, corresponding to Human Stat3.
Specificity:	Stat3 (S727) polyclonal antibody detects endogenous levels of Stat3 protein.
Formulation:	Rabbit IgG, 1mg/ml in PBS with 0.02% sodium azide, 50% glycerol, pH7.2
Concentration:	1mg/ml
Conjugation:	Unconjugated
Storage:	Store at 4°C short term. Aliquot and store at -20°C long term. Avoid freeze-thaw cycles.
Stability:	1 year
Predicted Protein Size:	~ 88 kDa
Gene Name:	signal transducer and activator of transcription 3
Database Link:	<a href="#">Entrez Gene 6774 Human P40763</a>
Background:	Membrane receptor signaling by various ligands, including interferons and growth hormones such as EGF, induces activation of Jak kinases which then leads to tyrosine phosphorylation of the various Stat transcription factors. Stat1 and Stat2 are induced by IFN- $\alpha$ and form a heterodimer which is part of the ISGF3 transcription factor complex. Although early reports indicate Stat3 activation by EGF and IL-6, it has been shown that Stat3 $\beta$ appears to be activated by both while Stat3 $\alpha$ is activated by EGF, but not by IL-6. Highest expression of Stat4 is seen in testis and myeloid cells. IL-12 has been identified as an activator of Stat4. Stat5 has been shown to be activated by prolactin and by IL-3. Stat6 is involved in IL-4 activated signaling pathways.
Synonyms:	Acute-phase response factor; APRF; Signal transducer and activator of transcription 3; STAT-3



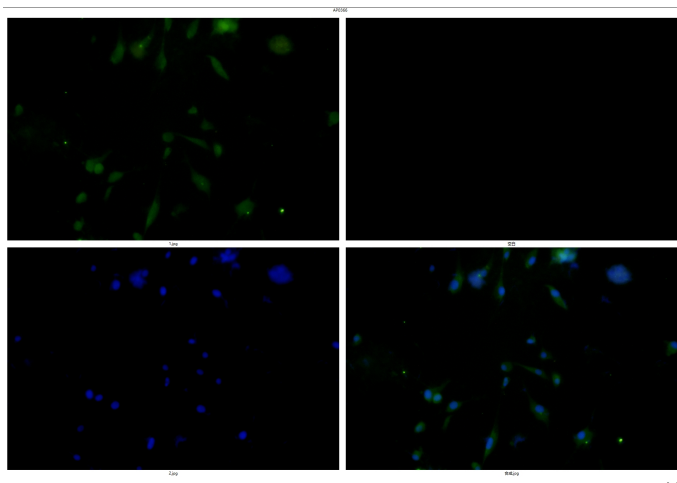
[View online »](#)

**Note:** For research use only, not for use in diagnostic procedure.

**Product images:**



Western blot (WB) analysis of Stat3 (S727) polyclonal antibody at 1:500 dilution Lane1:Hela whole cell lysate(40µg) Lane2:panc1 whole cell lysate(40µg) Lane3:AML-12 whole cell lysate(40µg) Lane4:C6 whole cell lysate(40µg)



Immunofluorescence analysis of U-87MG cells using Stat3 antibody at dilution of 1:50.