

## Product datasheet for **TA392580M**

### Thyroid Hormone Receptor alpha (THRA) Rabbit Polyclonal Antibody

#### Product data:

Product Type:	Primary Antibodies
Applications:	IF, WB
Recommended Dilution:	WB: 1:2000~1:5000 IF: 1:50~1:200
Reactivity:	Human, Pig
Host:	Rabbit
Isotype:	IgG
Clonality:	Polyclonal
Immunogen:	Synthetic peptide, corresponding to Human TRα.
Specificity:	TRα polyclonal antibody detects endogenous levels of TRα protein.
Formulation:	Rabbit IgG, 1mg/ml in PBS with 0.02% sodium azide, 50% glycerol, pH7.2
Concentration:	1mg/ml
Conjugation:	Unconjugated
Storage:	Store at 4°C short term. Aliquot and store at -20°C long term. Avoid freeze-thaw cycles.
Stability:	1 year
Predicted Protein Size:	~ 58 kDa
Gene Name:	thyroid hormone receptor, alpha
Database Link:	<a href="#">Entrez Gene 7067 Human P10827</a>

[View online »](#)

**Background:**

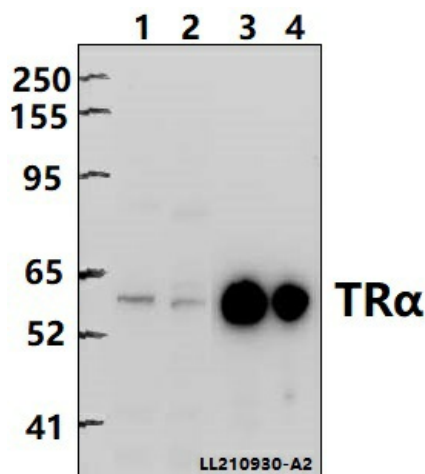
Thyroid hormone nuclear receptors (TRs) are ligand-dependent transcription factors which regulate and control many metabolic and developmental processes. There are two genes encoding TRs identified to date, TR $\alpha$  and TR $\beta$ . TRs bind to thyroid hormone response elements (TREs) with half-site binding motifs in the orientation of palindromes, direct repeats or inverted palindromes. The affinities of binding are both variable and influenced differentially by 3,5,3'-triiodo-L-thyronine (T3). Transcriptional regulation by TRs is also modulated by heterodimerization with TR nuclear accessory proteins, the most extensively characterized of which are the retinoid X receptors (RXR $\alpha$ , RXR $\beta$  and RXR $\gamma$ ). The TR $\alpha$  isoform TR $\alpha$ 1 can display both a nuclear and undefined cytoplasmic location, and is the only TR that is imported into the mitochondrial matrix. TR $\alpha$ 2 is a C-terminal variant of TR $\alpha$ 1 that does not bind thyroid hormones (THs) and weakly binds DNA. TR $\alpha$ 2 acts as a dominant negative antagonist of TH signalling.

**Synonyms:**

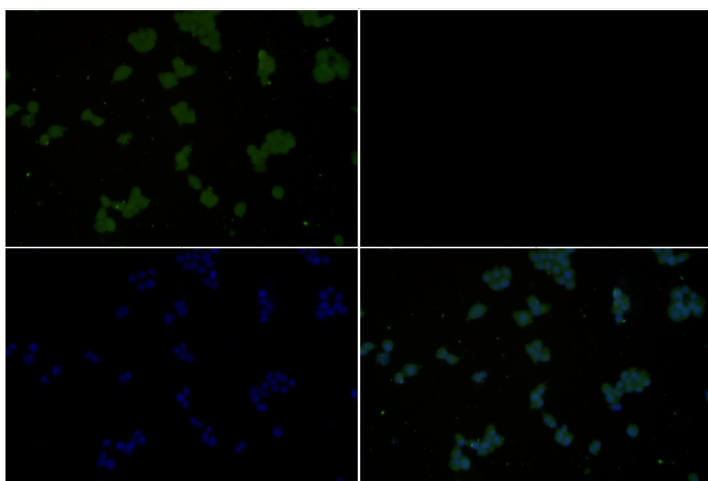
c-erbA-1; c-erbA-alpha; EAR-7; Nuclear receptor subfamily 1 group A member 1; Thyroid hormone receptor alpha; V-erbA-related protein 7

**Note:**

For research use only, not for use in diagnostic procedure.

**Product images:**


Western blot (WB) analysis of TR $\alpha$  polyclonal antibody at 1:5000 dilution Lane1:THP-1 whole cell lysate(40ug) Lane2:K562 whole cell lysate(40ug) Lane3:The Kidney tissue lysate of Pig(40ug) Lane4:The Liver tissue lysate of Pig(40ug)



Immunofluorescence analysis of HEK293T cells using TR $\alpha$  antibody at dilution of 1:50.