

## Product datasheet for **TA392579M**

### Estrogen Related Receptor beta (ESRRB) Rabbit Polyclonal Antibody

#### Product data:

|                         |  |
|-------------------------|--|
| Product Type:           | Primary Antibodies   |
| Applications:           | IF, WB   |
| Recommended Dilution:   | WB: 1:1000~1:2000 IF: 1:50~1:200   |
| Reactivity:             | Human  |
| Host:                   | Rabbit   |
| Isotype:                | IgG  |
| Clonality:              | Polyclonal   |
| Immunogen:              | Synthetic peptide, corresponding to Human ERR $\beta$ .                                  |
| Specificity:            | ERR $\beta$ polyclonal antibody detects endogenous levels of ERR $\beta$ protein.        |
| Formulation:            | Rabbit IgG, 1mg/ml in PBS with 0.02% sodium azide, 50% glycerol, pH7.2                   |
| Concentration:          | 1mg/ml   |
| Conjugation:            | Unconjugated   |
| Storage:                | Store at 4°C short term. Aliquot and store at -20°C long term. Avoid freeze-thaw cycles. |
| Stability:              | 1 year   |
| Predicted Protein Size: | ~ 48 kDa   |
| Gene Name:              | estrogen related receptor beta   |
| Database Link:          | <a href="#">Entrez Gene 2103 Human O95718</a>  |



[View online »](#)

**Background:**

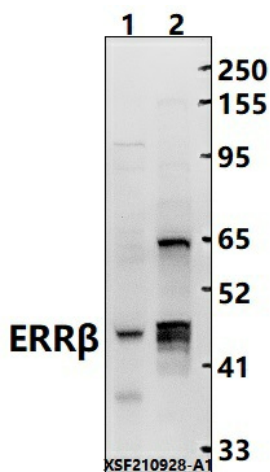
ERRβ/γ Antibody (E-1) is a high quality monoclonal ERRβ/γ antibody (also designated ERRβ/γ antibody) suitable for the detection of the ERRβ/γ protein of mouse, rat and human origin. ERRβ/γ Antibody (E-1) is available as both the non-conjugated anti-ERRβ/γ antibody form, as well as multiple conjugated forms of anti-ERRβ/γ antibody, including agarose, HRP, PE, FITC and multiple Alexa Fluor® conjugates. Estrogen and progesterone receptors are members of a family of transcription factors that are regulated by the binding of their cognate ligands. The interaction of hormone-bound estrogen receptors with estrogen responsive elements (EREs) alters transcription of ERE-containing genes. Estrogen receptor-related proteins (ERRα, β and γ) are orphan nuclear receptors. Like estrogen receptors, ERRs bind specifically to EREs to activate reporter genes. ERRβ, also known as steroid hormone receptor ERR2 or estrogen receptor-like 2, is expressed during mammary gland development and is critical in embryo development. The loss of ERRβ results in severely impaired chorion formation leading to placental failure and embryonic death. ERRβ also potently represses the transcriptional activity of Nrf2. ERRγ, also known as ERR3, is abundantly expressed in fetal heart. The loss of ERRγ results in lactatemia and death within the first week of life.

**Synonyms:**

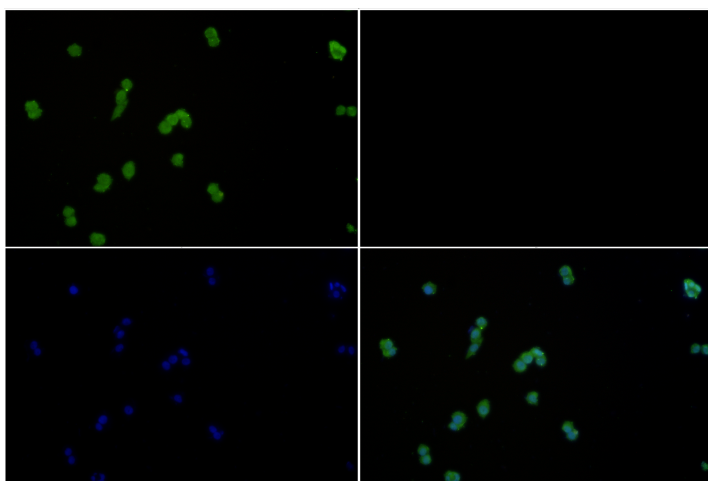
ERR-beta; ERRB2; ERR beta-2; ESRL2; ESRRB; Estrogen-related receptor beta; Estrogen receptor-like 2; NR3B2; Nuclear receptor subfamily 3 group B member 2; Steroid hormone receptor ERR2

**Note:**

For research use only, not for use in diagnostic procedure.

**Product images:**


Western blot (WB) analysis of ERRβ polyclonal antibody at 1:1000 dilution Lane1:MCF-7 whole cell lysate(40ug) Lane2:MCF-7 nuclear lysate(20ug)



Immunofluorescence analysis of MCF-7 cells using ERR $\beta$  antibody at dilution of 1:50.