

Product datasheet for **TA392576S**

PTEN Rabbit Polyclonal Antibody

Product data:

Product Type:	Primary Antibodies
Applications:	IF, WB
Recommended Dilution:	WB: 1:500~1:1000 IF: 1:50~1:200
Reactivity:	Human, Rat, Mouse
Host:	Rabbit
Isotype:	IgG
Clonality:	Polyclonal
Immunogen:	Synthetic peptide, corresponding to Human PTEN.
Specificity:	PTEN (Ab-370) polyclonal antibody detects endogenous levels of PTEN protein.
Formulation:	Rabbit IgG, 1mg/ml in PBS with 0.02% sodium azide, 50% glycerol, pH7.2
Concentration:	1mg/ml
Conjugation:	Unconjugated
Storage:	Store at 4°C short term. Aliquot and store at -20°C long term. Avoid freeze-thaw cycles.
Stability:	1 year
Predicted Protein Size:	~ 50 kDa
Gene Name:	phosphatase and tensin homolog
Database Link:	Entrez Gene 5728 Human P60484
Background:	PTEN (phosphatase and tensin homologue deleted on chromosome ten), also referred to as MMAC (mutated in multiple advanced cancers) phosphatase, is a tumor suppressor implicated in a wide variety of human cancers. PTEN encodes a 403 amino acid polypeptide originally described as a dual-specificity protein phosphatase. The main substrates of PTEN are inositol phospholipids generated by the activation of the phosphoinositide 3-kinase (PI3K). PTEN is a major negative regulator of the PI3K/Akt signaling pathway. PTEN possesses a carboxy-terminal, noncatalytic regulatory domain with three phosphorylation sites (Ser380, Thr382, and Thr383) that regulate PTEN stability and may affect its biological activity. PTEN regulates p53 protein levels and activity and is involved in G protein-coupled signaling during chemotaxis.

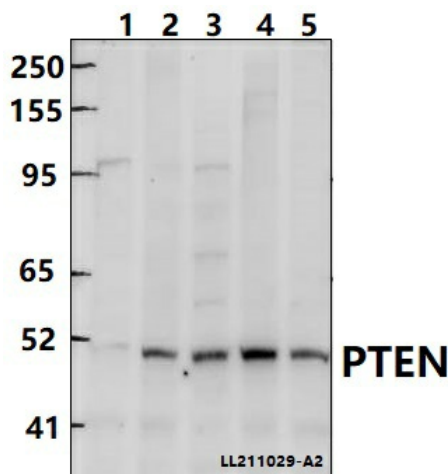


[View online »](#)

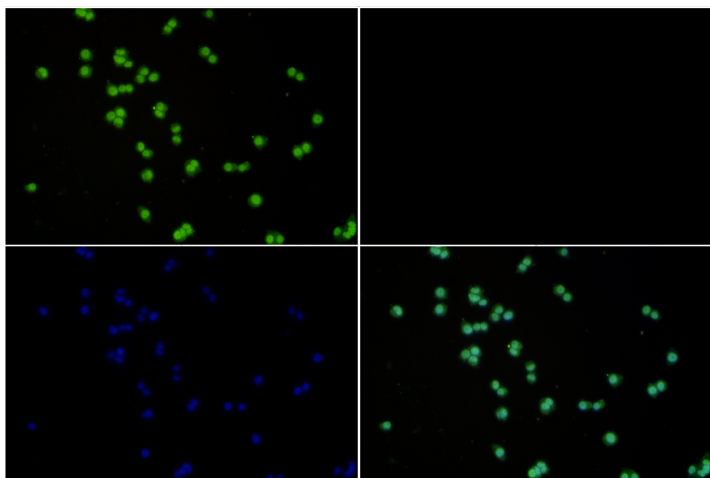
Synonyms: Mutated in multiple advanced cancers 1; Phosphatase and tensin homolog; Phosphatidylinositol 3,4,5-trisphosphate 3-phosphatase and dual-specificity protein phosphatase PTEN

Note: For research use only, not for use in diagnostic procedure.

Product images:



Western blot (WB) analysis of PTEN (Ab-370) polyclonal antibody at 1:1000 dilution
 Lane1:THP-1 whole cell lysate(40ug) Lane2:Hela whole cell lysate(40ug) Lane3:MCF-7 whole cell lysate(40ug) Lane4:AML-12 whole cell lysate(40ug) Lane5:C6 whole cell lysate(40ug)



Immunofluorescence analysis of MCF-7 cells using PTEN antibody at dilution of 1:50.