

Product datasheet for **TA392570S**

Cytochrome P450 2E1 (CYP2E1) Rabbit Polyclonal Antibody

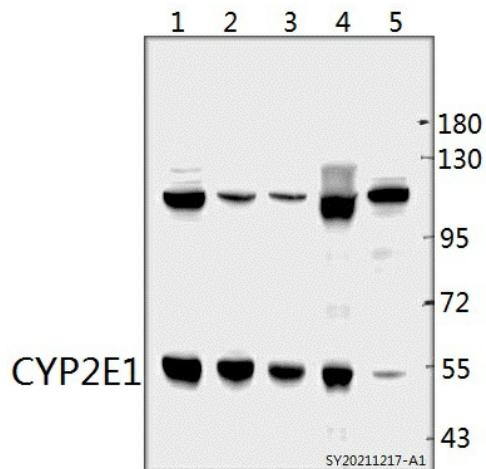
Product data:

Product Type:	Primary Antibodies
Applications:	WB
Recommended Dilution:	WB: 1:1000~1:2000
Reactivity:	Human, Rat, Mouse
Host:	Rabbit
Isotype:	IgG
Clonality:	Polyclonal
Immunogen:	Synthetic peptide, corresponding to Human CYP2E1.
Specificity:	CYP2E1 polyclonal antibody detects endogenous levels of CYP2E1 protein.
Formulation:	Rabbit IgG, 1mg/ml in PBS with 0.02% sodium azide, 50% glycerol, pH7.4.
Concentration:	1mg/ml
Conjugation:	Unconjugated
Storage:	Store at 4°C short term. Aliquot and store at -20°C long term. Avoid freeze-thaw cycles.
Stability:	1 year
Predicted Protein Size:	~ 55 kDa
Gene Name:	cytochrome P450 family 2 subfamily E member 1
Database Link:	Entrez Gene 1571 Human P05181
Background:	Cytochrome P450 2E1, metabolizes several precarcinogens, drugs, and solvents to reactive metabolites. Inactivates a number of drugs and xenobiotics and also bioactivates many xenobiotic substrates to their hepatotoxic or carcinogenic forms.
Synonyms:	4-nitrophenol 2-hydroxylase; CYP2E; CYP2E1; CYP2E1; CYP2E1; Cytochrome P450 2E1; Cytochrome P450-J
Note:	For research use only, not for use in diagnostic procedure.

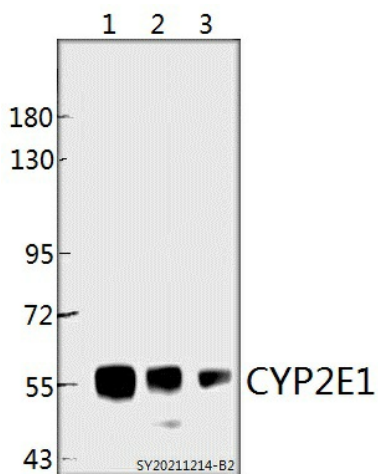


[View online »](#)

Product images:



Western blot (WB) analysis of CYP2E1 polyclonal antibody at 1:1000 dilution Lane1:Pancl whole cell lysate(40ug) Lane2:A375 whole cell lysate(40ug) Lane3:LO2 whole cell lysate(40ug) Lane4:HEK293T whole cell lysate(40ug) Lane5:A549 whole cell lysate(40ug)



Western blot (WB) analysis of CYP2E1 polyclonal antibody at 1:1000 dilution Lane1:The Liver tissue lysate of Rat(40ug) Lane2:The Liver tissue lysate of Mouse(40ug) Lane3:The Kidney tissue lysate of Rat(40ug)