

## Product datasheet for **TA392564**

### Cytochrome P450 17A1 (CYP17A1) Rabbit Polyclonal Antibody

#### Product data:

Product Type:	Primary Antibodies
Applications:	WB
Recommended Dilution:	WB: 1:2000~1:5000
Reactivity:	Human
Host:	Rabbit
Isotype:	IgG
Clonality:	Polyclonal
Immunogen:	Synthetic peptide, corresponding to Human CYP17A1.
Specificity:	CYP17A1 (N249) polyclonal antibody detects endogenous levels of CYP17A1 protein.
Formulation:	Rabbit IgG, 1mg/ml in PBS with 0.02% sodium azide, 50% glycerol, pH7.2.
Concentration:	1mg/ml
Conjugation:	Unconjugated
Storage:	Store at 4°C short term. Aliquot and store at -20°C long term. Avoid freeze-thaw cycles.
Stability:	1 year
Predicted Protein Size:	~ 60 kDa
Gene Name:	cytochrome P450 family 17 subfamily A member 1
Database Link:	<a href="#">Entrez Gene 1586 Human P05093</a>
Background:	CYP17A1, also known as cytochrome P450C17, is a steroidogenic enzyme belonging to the P450 cytochrome superfamily of monooxygenases. In humans, CYP17A1 expression is abundantly expressed in the adrenal cortex, where it plays a central role in the androgen synthesis pathway (2). CYP17A1 is the primary target of abiraterone, a synthetic steroid used in the treatment of castration-resistant prostate cancer (CRPC). Abiraterone is converted to the more active form D4A, which antagonizes androgen receptor signaling by inhibiting CYP17A1 and other steroidogenic enzymes. This suppresses the synthesis of 5 $\alpha$ -dihydrotestosterone (DHT), which is a driver of castration-resistant prostate cancer cell growth.

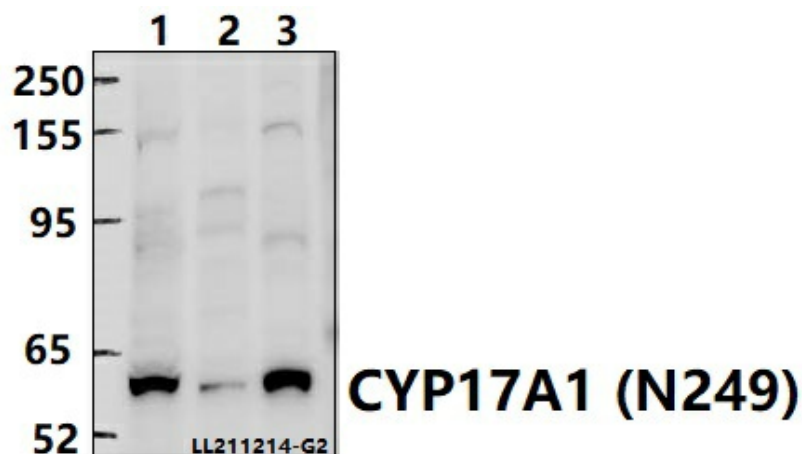


[View online »](#)

**Synonyms:** 17-alpha-hydroxyprogesterone aldolase; CYP17, S17AH; CYP17A1; CYPXVII; Cytochrome P450 17A1; Cytochrome P450-C17; Cytochrome P450c17; Steroid 17-alpha-hydroxylase/17,20 lyase; Steroid 17-alpha-monooxygenase

**Note:** For research use only, not for use in diagnostic procedure.

**Product images:**



Western blot (WB) analysis of CYP17A1 (N249) polyclonal antibody at 1:2000 dilution  
Lane1: HEK293T whole cell lysate (40ug)  
Lane2: A549 whole cell lysate (40ug) Lane3: K562 whole cell lysate (40ug)