

## Product datasheet for **TA392560S**

### **HNF 4 alpha (HNF4A) Rabbit Polyclonal Antibody**

#### **Product data:**

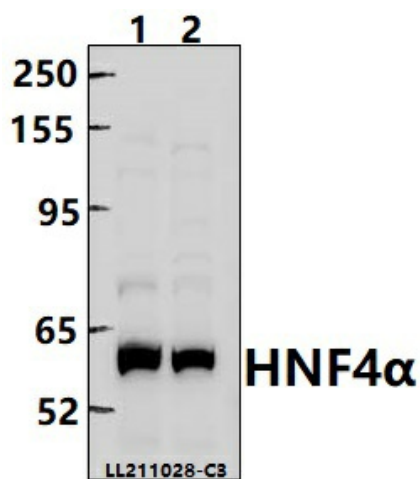
Product Type:	Primary Antibodies
Applications:	WB
Recommended Dilution:	WB: 1:1000~1:2000 IHC: 1:50~1:200
Reactivity:	Human
Host:	Rabbit
Isotype:	IgG
Clonality:	Polyclonal
Immunogen:	Synthetic peptide, corresponding to Human HNF4α.
Specificity:	HNF4α polyclonal antibody detects endogenous levels of HNF4α protein.
Formulation:	Rabbit IgG, 1mg/ml in PBS with 0.02% sodium azide, 50% glycerol, pH7.2
Concentration:	1mg/ml
Conjugation:	Unconjugated
Storage:	Store at 4°C short term. Aliquot and store at -20°C long term. Avoid freeze-thaw cycles.
Stability:	1 year
Predicted Protein Size:	~ 58 kDa
Gene Name:	hepatocyte nuclear factor 4 alpha
Database Link:	<a href="#">Entrez Gene 3172 Human P41235</a>
Background:	Hepatocyte nuclear factor 4α (HNF4α) is a transcription factor that belongs to the steroid hormone receptor superfamily and is enriched in liver. HNF4α, in association with PGC-1α, activates gluconeogenic genes such as phosphoenolpyruvate carboxykinase and glucose-6-phosphatase genes in fasted livers. Conditional knockout of the HNF4α gene in the mouse liver destroys lipid homeostasis and leads to lipid accumulation in the liver and a reduction of serum cholesterol and triglyceride levels. Mutations in HNF4α have been linked to maturity-onset diabetes of the young (MODY).
Synonyms:	Hepatocyte nuclear factor 4-alpha; HNF-4-alpha; Nuclear receptor subfamily 2 group A member 1; TCF-14; Transcription factor 14; Transcription factor HNF-4



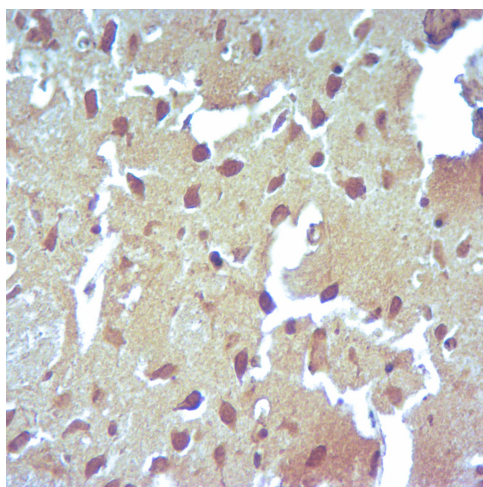
[View online »](#)

Note: For research use only, not for use in diagnostic procedure.

Product images:



Western blot (WB) analysis of HNF4 $\alpha$  polyclonal antibody at 1:2000 dilution Lane1:HepG2 whole cell lysate(40ug) Lane2:A549 whole cell lysate(40ug)



Immunohistochemistry of paraffin-embedded Human Brain using HNF4 $\alpha$  antibody at dilution of 1:50.