

## Product datasheet for **TA392559S**

### PER2 Rabbit Polyclonal Antibody

#### Product data:

Product Type:	Primary Antibodies
Applications:	WB
Recommended Dilution:	WB: 1:2000~1:5000 IHC: 1:50~1:200
Reactivity:	Human, Pig
Host:	Rabbit
Isotype:	IgG
Clonality:	Polyclonal
Immunogen:	Synthetic peptide, corresponding to Human PER2.
Specificity:	PER2 polyclonal antibody detects endogenous levels of PER2 protein.
Formulation:	Rabbit IgG, 1mg/ml in PBS with 0.02% sodium azide, 50% glycerol, pH7.2.
Concentration:	1mg/ml
Conjugation:	Unconjugated
Storage:	Store at 4°C short term. Aliquot and store at -20°C long term. Avoid freeze-thaw cycles.
Stability:	1 year
Predicted Protein Size:	~ 155 kDa
Gene Name:	period circadian clock 2
Database Link:	<a href="#">Entrez Gene 8864 Human O15055</a>
Background:	Biological timepieces called circadian Clocks are responsible for the regulation of hormonal rhythms, sleep cycles and other behaviors. The suprachiasmatic nucleus (SCN), which is located in the brain, was the first mammalian circadian Clock to be discovered. A number of transcription factors appearing to be molecular components of the SCN Clock have been identified. Mutations within the Clock gene increase the length of the endogenous period and cause a loss of rhythmicity of circadian oscillations. Three mammalian period proteins, designated Per1, Per2 and Per3, exhibit circadian rhythms in the SCN. During subjective night, Per1 and Per2 RNA levels increase in response to light pulses while Per3 RNA levels show no change in response to light pulses. Tim, formerly timeless, interacts with Per1 as well as Per2; and Tim and Per1 negatively regulate Clock-BMAL1-induced transcription.

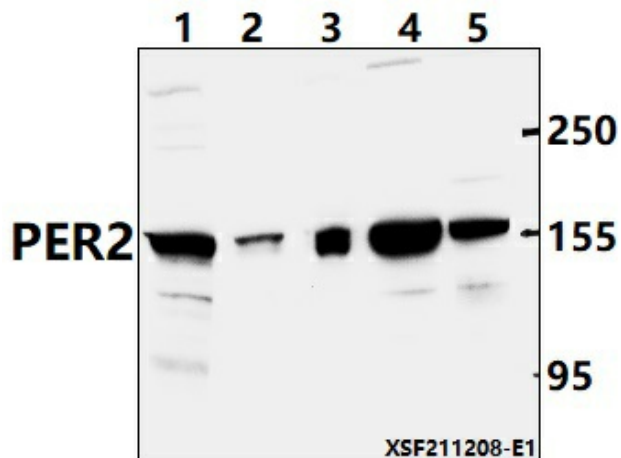


[View online »](#)

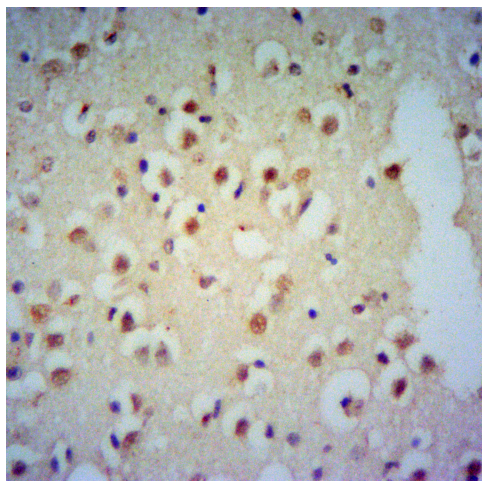
**Synonyms:** Circadian clock protein PERIOD 2; hPER2; KIAA0347; PER2; Period circadian protein homolog 2

**Note:** For research use only, not for use in diagnostic procedure.

**Product images:**



Western blot (WB) analysis of PER2 polyclonal antibody at 1:2000 dilution Lane1:A549 whole cell lysate(40ug) Lane2:The Spleen tissue lysate of Pig(40ug) Lane3:The Lung tissue lysate of Pig(40ug) Lane4:MCF-7 whole cell lysate(40ug) Lane5:Hela whole cell lysate(40ug)



Immunohistochemistry of paraffin-embedded Human Brain using PER2 antibody at dilution of 1:50.