

Product datasheet for **TA392558**

CLOCK Rabbit Polyclonal Antibody

Product data:

Product Type:	Primary Antibodies
Applications:	WB
Recommended Dilution:	WB: 1:1000~1:2000 IHC: 1:50~1:200 IF: 1:50~1:200 IP: 1:50~1:200
Reactivity:	Human
Host:	Rabbit
Isotype:	IgG
Clonality:	Polyclonal
Immunogen:	Synthetic peptide, corresponding to Human CLOCK.
Specificity:	CLOCK polyclonal antibody detects endogenous levels of CLOCK protein.
Formulation:	Rabbit IgG, 1mg/ml in PBS with 0.02% sodium azide, 50% glycerol, pH7.2
Concentration:	1mg/ml
Conjugation:	Unconjugated
Storage:	Store at 4°C short term. Aliquot and store at -20°C long term. Avoid freeze-thaw cycles.
Stability:	1 year
Predicted Protein Size:	~ 90 kDa
Gene Name:	clock circadian regulator
Database Link:	Entrez Gene 9575 Human O15516



[View online »](#)

Background:

Circadian rhythms govern many key physiological processes that fluctuate with a period of approximately 24 hours. These processes include the sleep-wake cycle, glucose, lipid and drug metabolism, heart rate, hormone secretion, renal blood flow, and body temperature, as well as basic cellular processes such as DNA repair and the timing of the cell division cycle. The mammalian circadian system consists of many individual tissue-specific clocks (peripheral clocks) that are controlled by a master circadian pacemaker residing in the suprachiasmatic nuclei (SCN) of the brain. The periodic circadian rhythm is prominently manifested by the light-dark cycle, which is sensed by the visual system and processed by the SCN. The SCN processes the light-dark information and synchronizes peripheral clocks through neural and humoral output signals. The cellular circadian clockwork consists of interwoven positive and negative regulatory loops, or limbs. The positive limb includes the CLOCK and BMAL1 proteins, two basic helix-loop-helix-PAS containing transcription factors that bind E box enhancer elements and activate transcription of their target genes. CLOCK is a histone acetyltransferase (HAT) protein, which acetylates both histone H3 and H4. BMAL1 binds to CLOCK and enhances its HAT activity. The CLOCK/BMAL1 dimer exhibits a periodic oscillation in both nuclear/cytoplasmic localization and protein levels, both of which are regulated by phosphorylation. CLOCK/BMAL1 target genes include the Cry and Per genes, whose proteins form the negative limb of the circadian clockwork system. CRY and PER proteins (CRY1, CRY2, PER1, PER2 and PER3) form oligomers that also periodically shuttle between the nucleus and cytoplasm. When in the nucleus, CRY/PER proteins inhibit CLOCK/BMAL1-mediated transcriptional activation, thus completing the circadian transcriptional loop. In tissues, roughly six to eight percent of all genes exhibit a circadian expression pattern. This 24-hour periodicity in gene expression results from coordination of the positive and negative regulatory limbs of the cellular clockwork system, and is fine-tuned by outside signals received from the SCN.

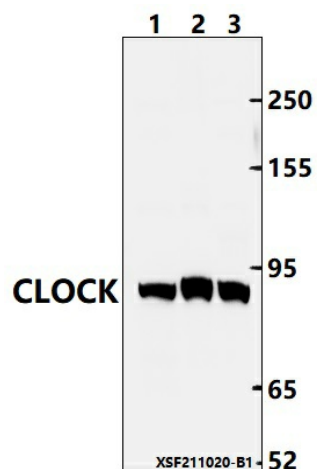
Synonyms:

BHLHE8; bHLHe8; Circadian locomotor output cycles protein kaput; Class E basic helix-loop-helix protein 8; CLOCK; hCLOCK; KIAA0334

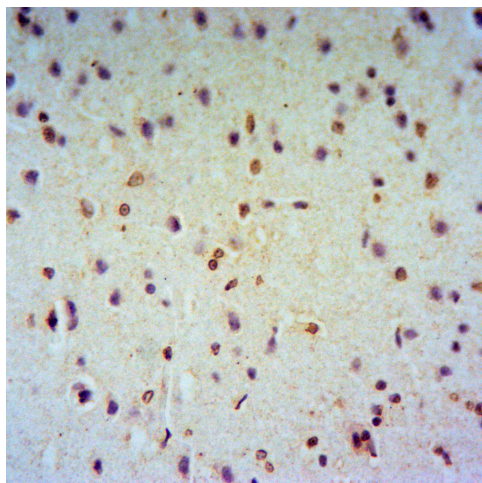
Note:

For research use only, not for use in diagnostic procedure.

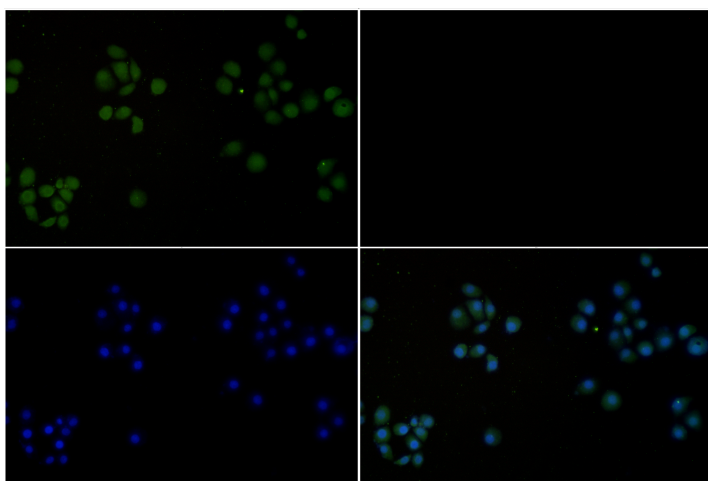
Product images:



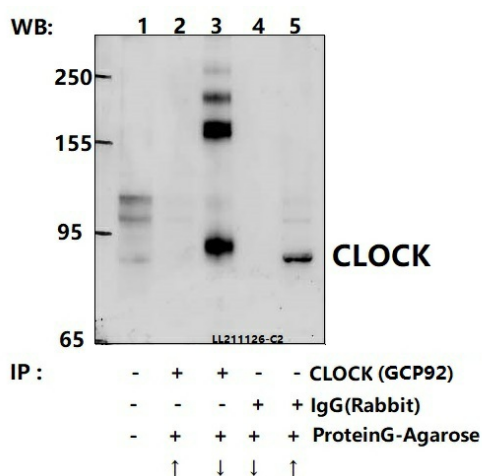
Western blot (WB) analysis of CLOCK polyclonal antibody at 1:1000 dilution Lane1:HEK293T whole cell lysate(40ug) Lane2:EC9706 whole cell lysate(40ug) Lane3:Hela whole cell lysate(40ug)



Immunohistochemistry of paraffin-embedded Human Brain using CLOCK antibody at dilution of 1:50.



Immunofluorescence analysis of EC9706 cells using CLOCK antibody at dilution of 1:50.



Immunoprecipitation of A549 cell lysates using CLOCK pAb (Sepharose Bead Conjugate)#BD0048 (lane 2 and lane 3) and Nonspecific IgG Control (Sepharose Bead Conjugate)#BD0048 (lane 4 and lane 5) .Lane 1 is 30% input. The western blot was probed using CLOCK pAb #TA392558.