

Product datasheet for **TA392556**

Nrf2 (NFE2L2) Rabbit Polyclonal Antibody

Product data:

Product Type:	Primary Antibodies
Applications:	WB
Recommended Dilution:	WB: 1:1000~1:2000 IHC: 1:50~1:200
Reactivity:	Human, Pig
Host:	Rabbit
Isotype:	IgG
Clonality:	Polyclonal
Immunogen:	Synthetic peptide, corresponding to Human NRF-2.
Specificity:	NRF-2 polyclonal antibody detects endogenous levels of NRF-2 protein.
Formulation:	Rabbit IgG, 1mg/ml in PBS with 0.02% sodium azide, 50% glycerol, pH7.2
Concentration:	1mg/ml
Conjugation:	Unconjugated
Storage:	Store at 4°C short term. Aliquot and store at -20°C long term. Avoid freeze-thaw cycles.
Stability:	1 year
Predicted Protein Size:	~ 90 kDa
Gene Name:	nuclear factor, erythroid 2 like 2
Database Link:	Entrez Gene 4780 Human Q16236



[View online »](#)

Background:

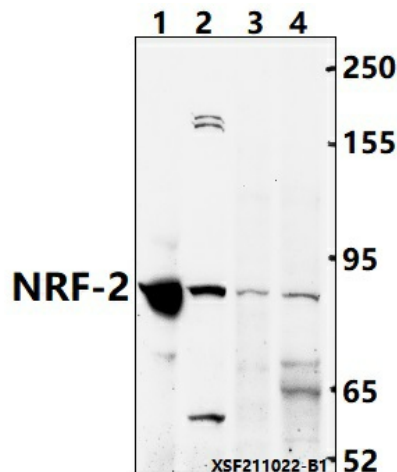
The nuclear factor-like 2 (NRF2) transcriptional activator binds antioxidant response elements (ARE) of target gene promoter regions to regulate expression of oxidative stress response genes. Under basal conditions, the NRF2 inhibitor INrf2 (also called KEAP1) binds and retains NRF2 in the cytoplasm where it can be targeted for ubiquitin-mediated degradation. Small amounts of constitutive nuclear NRF2 maintain cellular homeostasis through regulation of basal expression of antioxidant response genes. Following oxidative or electrophilic stress, KEAP1 releases NRF2, thereby allowing the activator to translocate to the nucleus and bind to ARE-containing genes. The coordinated action of NRF2 and other transcription factors mediates the response to oxidative stress. Altered expression of NRF2 is associated with chronic obstructive pulmonary disease (COPD). NRF2 activity in lung cancer cell lines directly correlates with cell proliferation rates, and inhibition of NRF2 expression by siRNA enhances anti-cancer drug-induced apoptosis.

Synonyms:

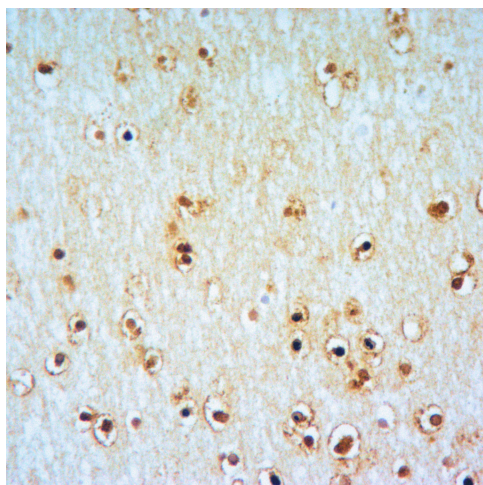
HEBP1; NF-E2-related factor 2; NFE2-related factor 2; NFE2L2; Nrf-2; NRF2; Nuclear factor, erythroid derived 2, like 2; Nuclear factor erythroid 2-related factor 2

Note:

For research use only, not for use in diagnostic procedure.

Product images:

Western blot (WB) analysis of NRF-2 polyclonal antibody at 1:1000 dilution Lane1:The Brain tissue lysate of Pig(40ug) Lane2:The Heart tissue lysate of Pig(40ug) Lane3:HCT116 whole cell lysate(40ug) Lane4:HEK293T whole cell lysate(40ug)



Immunohistochemistry of paraffin-embedded Rat Brain using NRF-2 antibody at dilution of 1:50.