

Product datasheet for **TA392555M**

ARNTL2 Rabbit Polyclonal Antibody

Product data:

Product Type:	Primary Antibodies
Applications:	WB
Recommended Dilution:	WB: 1:1000~1:2000 IHC: 1:50~1:200
Reactivity:	Human
Host:	Rabbit
Isotype:	IgG
Clonality:	Polyclonal
Immunogen:	Synthetic peptide, corresponding to Human BMAL2.
Specificity:	BMAL2 polyclonal antibody detects endogenous levels of BMAL2 protein.
Formulation:	Rabbit IgG, 1mg/ml in PBS with 0.02% sodium azide, 50% glycerol, pH7.2
Concentration:	1mg/ml
Conjugation:	Unconjugated
Storage:	Store at 4°C short term. Aliquot and store at -20°C long term. Avoid freeze-thaw cycles.
Stability:	1 year
Predicted Protein Size:	~ 70 kDa
Gene Name:	aryl hydrocarbon receptor nuclear translocator like 2
Database Link:	Entrez Gene 56938 Human Q8WYA1
Background:	BMAL2, also known as ARNTL2 (aryl hydrocarbon receptor nuclear translocator-like 2), MOP9, CLIF or PASD9, is a 636 amino acid protein that localizes to the nucleus and contains one bHLH (basic helix-loop-helix) domain, one PAC (PAS-associated C-terminal) domain and two PAS (PER-ARNT-SIM) domains. Expressed at high levels in placenta and brain and at lower levels in liver, thymus, heart, lung and kidney, BMAL2 functions as a component of the circadian core oscillator, which includes a variety of proteins that work in tandem to activate the transcription of target genes. More specifically, BMAL2, when functioning as a component of the core oscillator, binds to the E-box element (3'-CACGTG-5') of target DNA, thus inducing transcription. Multiple isoforms of BMAL2 exist due to alternative splicing events.

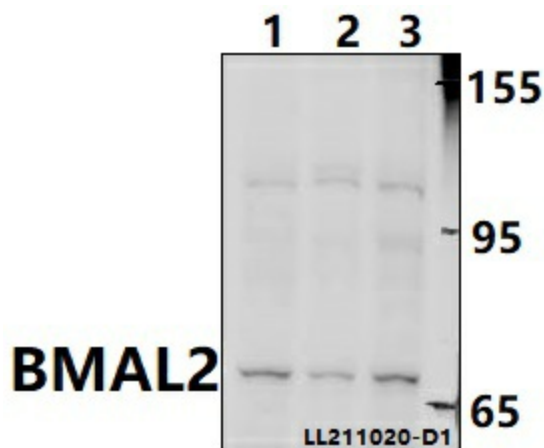
[View online »](#)

Synonyms:

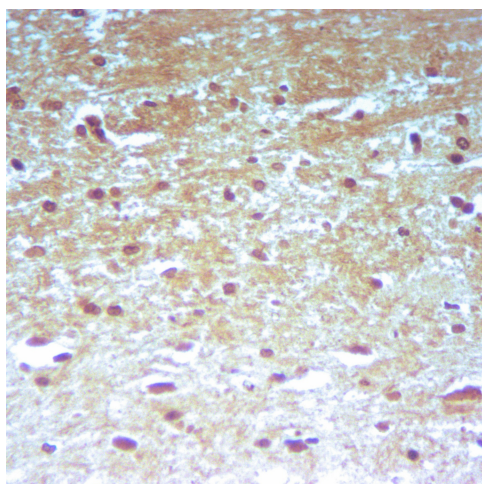
Aryl hydrocarbon receptor nuclear translocator-like protein 2; Basic-helix-loop-helix-PAS protein MOP9; bHLHe6; Brain and muscle ARNT-like 2; Class E basic helix-loop-helix protein 6; CLIF; CYCLE-like factor; Member of PAS protein 9; PAS domain-containing protein 9

Note:

For research use only, not for use in diagnostic procedure.

Product images:


Western blot (WB) analysis of BMAL2 polyclonal antibody at 1:2000 dilution Lane1:A549 whole cell lysate(40ug) Lane2:U-87MG whole cell lysate(40ug) Lane3:PC3 whole cell lysate(40ug)



Immunohistochemistry of paraffin-embedded Human Brain using BMAL2 antibody at dilution of 1:50.