

Product datasheet for **TA392554M**

ITLN1 Rabbit Polyclonal Antibody

Product data:

Product Type:	Primary Antibodies
Applications:	WB
Recommended Dilution:	WB: 1:1000~1:2000 IHC: 1:50~1:200
Reactivity:	Human
Host:	Rabbit
Isotype:	IgG
Clonality:	Polyclonal
Immunogen:	Synthetic peptide, corresponding to Human LFR.
Specificity:	LFR polyclonal antibody detects endogenous levels of LFR protein.
Formulation:	Rabbit IgG, 1mg/ml in PBS with 0.02% sodium azide, 50% glycerol, pH7.2
Concentration:	1mg/ml
Conjugation:	Unconjugated
Storage:	Store at 4°C short term. Aliquot and store at -20°C long term. Avoid freeze-thaw cycles.
Stability:	1 year
Predicted Protein Size:	~ 34 kDa
Gene Name:	intelectin 1
Database Link:	Entrez Gene 55600 Human Q8WWA0

[View online »](#)

Background:

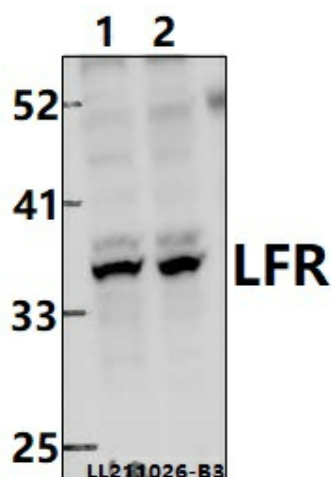
Intelectin-1, also known as ITLN1, INTL, Omentin or LFR, is a 313 amino acid protein that contains one fibrinogen C-terminal domain and is either secreted or lipid-anchored to the cell membrane. Highly expressed in small intestine and adipose tissue and present at lower levels in testis, heart, pancreas, colon and skeletal muscle, Intelectin-1 exists as a disulfide-linked homotrimer that functions to enhance Insulin-stimulated glucose uptake and is also thought to participate in host defense against microorganisms. In addition to its roles in glucose regulation and immune system function, Intelectin-1 may also be involved in iron metabolism and obesity regulation in adults. Intelectin-2 shares 85% amino acid identity with Intelectin-1 and, like Intelectin-1, is a secreted protein that contains one fibrinogen C-terminal domain and is thought to play a role in the host defense system. While Intelectin-1 is present in a variety of tissues, Intelectin-2 exists only in the small intestine.

Synonyms:

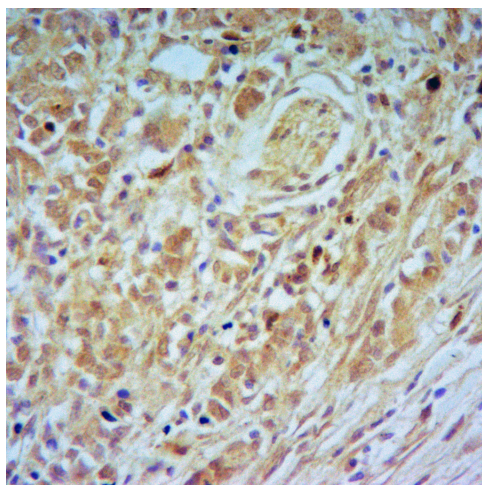
Endothelial lectin HL-1; Galactofuranose-binding lectin; Intelectin-1; Intestinal lactoferrin receptor; ITLN-1; Omentin

Note:

For research use only, not for use in diagnostic procedure.

Product images:


Western blot (WB) analysis of LFR polyclonal antibody at 1:2000 dilution Lane1:A549 whole cell lysate(40ug) Lane2:HepG2 whole cell lysate(40ug)



Immunohistochemistry of paraffin-embedded Human Colorectal cancer using LFR antibody at dilution of 1:50.