

## Product datasheet for **TA392553**

### ITLN1 Rabbit Polyclonal Antibody

#### Product data:

Product Type:	Primary Antibodies
Applications:	WB
Recommended Dilution:	WB: 1:2000~1:5000 IHC: 1:50~1:200
Reactivity:	Pig, Human
Host:	Rabbit
Isotype:	IgG
Clonality:	Polyclonal
Immunogen:	Synthetic peptide, corresponding to Human LFR.
Specificity:	LFR polyclonal antibody detects endogenous levels of LFR protein.
Formulation:	Rabbit IgG, 1mg/ml in PBS with 0.02% sodium azide, 50% glycerol, pH7.4.
Concentration:	1mg/ml
Conjugation:	Unconjugated
Storage:	Store at 4°C short term. Aliquot and store at -20°C long term. Avoid freeze-thaw cycles.
Stability:	1 year
Predicted Protein Size:	~ 35 kDa
Gene Name:	intellectin 1
Database Link:	<a href="#">Entrez Gene 55600 Human Q8WWA0</a>



[View online »](#)

**Background:**

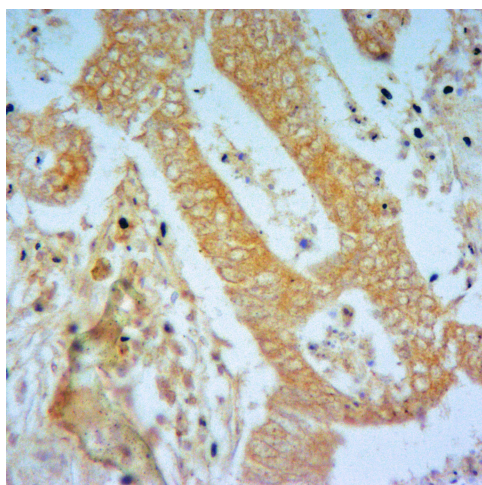
Intelectin-1, also known as ITLN1, INTL, Omentin or LFR, is a 313 amino acid protein that contains one fibrinogen C-terminal domain and is either secreted or lipid-anchored to the cell membrane. Highly expressed in small intestine and adipose tissue and present at lower levels in testis, heart, pancreas, colon and skeletal muscle, Intelectin-1 exists as a disulfide-linked homotrimer that functions to enhance insulin-stimulated glucose uptake and is also thought to participate in host defense against microorganisms. In addition to its role in glucose regulation and immune system function, Intelectin-1 may also be involved in iron metabolism and obesity regulation in adults. Intelectin-2 shares 85% amino acid identity with Intelectin-1 and, like Intelectin-1, is a secreted protein that contains one fibrinogen C-terminal domain and is thought to play a role in the host defense system. While Intelectin-1 is present in a variety of tissues, Intelectin-2 exists only in the small intestine.

**Synonyms:**

Endothelial lectin HL-1; Galactofuranose-binding lectin; Intelectin-1; Intestinal lactoferrin receptor; INTL; ITL; ITLN-1; LFR; Omentin; UNQ640/PRO1270

**Note:**

For research use only, not for use in diagnostic procedure.

**Product images:**

Immunohistochemistry of paraffin-embedded Human Colorectal cancer using LFR antibody at dilution of 1:50.