

## Product datasheet for **TA392552**

### **NR0B1 Rabbit Polyclonal Antibody**

#### **Product data:**

Product Type:	Primary Antibodies
Applications:	IF, IHC, WB
Recommended Dilution:	WB: 1:1000~1:2000 IHC: 1:50~1:200 IF: 1:50~1:200
Reactivity:	Human, Pig
Host:	Rabbit
Isotype:	IgG
Clonality:	Polyclonal
Immunogen:	Synthetic peptide, corresponding to Human DAX1.
Specificity:	DAX1 polyclonal antibody detects endogenous levels of DAX1 protein.
Formulation:	Rabbit IgG, 1mg/ml in PBS with 0.02% sodium azide, 50% glycerol, pH7.2
Concentration:	1mg/ml
Conjugation:	Unconjugated
Storage:	Store at 4°C short term. Aliquot and store at -20°C long term. Avoid freeze-thaw cycles.
Stability:	1 year
Predicted Protein Size:	~ 48 kDa
Gene Name:	nuclear receptor subfamily 0 group B member 1
Database Link:	<a href="#">Entrez Gene 190 Human P51843</a>



[View online »](#)

**Background:**

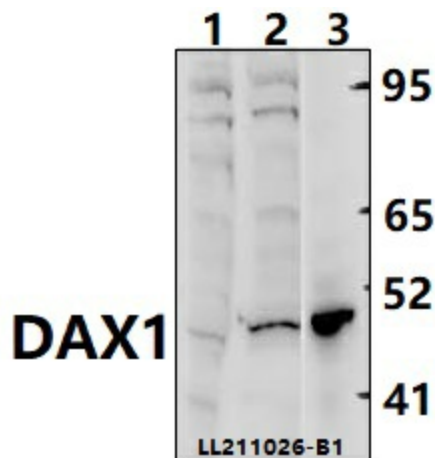
DSS-AHC critical region on the X chromosome protein 1 (DAX1) is an orphan nuclear receptor encoded by the nuclear receptor subfamily 0 group B member 1 (NR0B1) gene. DAX1 possesses an atypical DNA binding domain that allows it to form heterodimeric complexes with DNA binding partners and repress transcriptional activity. During development, DAX1 is important for establishment of the hypothalamic-pituitary-adrenal gonadal axis. The receptor is essential for development of several important hormone-producing organs that determine this axis, including the adrenal glands, pituitary, hypothalamus, and the male and female reproductive organs. Research studies suggest that DAX1 plays a role in maintenance of pluripotency in embryonic stem cells. Loss of DAX1 function through deletion or mutation results in adrenal insufficiency and hypogonadotropic hypogonadism, while duplication of the NR0B1 gene on the X-chromosome causes dosage-sensitive sex reversal.

**Synonyms:**

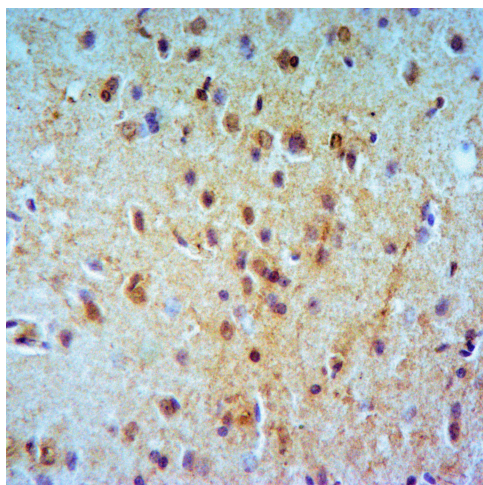
DSS-AHC critical region on the X chromosome protein 1; Nuclear receptor DAX-1; Nuclear receptor subfamily 0 group B member 1

**Note:**

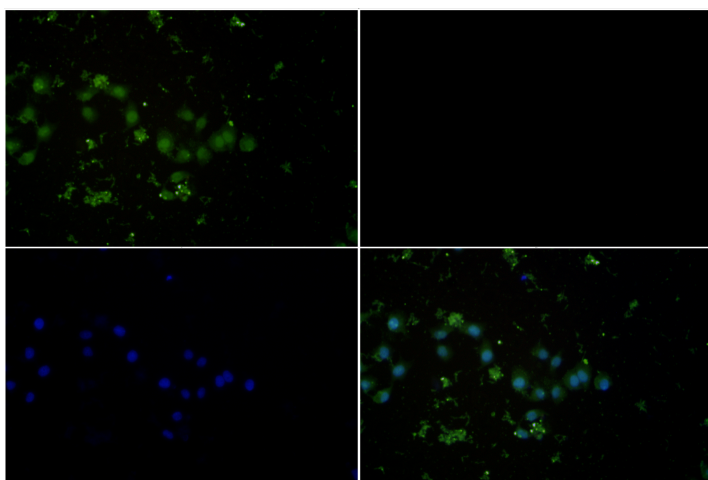
For research use only, not for use in diagnostic procedure.

**Product images:**

Western blot (WB) analysis of DAX1 polyclonal antibody at 1:2000 dilution. Lane 1: HEK293T whole cell lysate (40ug); Lane 2: A549 whole cell lysate (40ug); Lane 3: The Kidney tissue lysate of Pig (40ug).



Immunohistochemistry of paraffin-embedded Human Brain using DAX1 antibody at dilution of 1:50.



Immunofluorescence analysis of A549 cells using DAX1 antibody at dilution of 1:50.