

## Product datasheet for **TA392551**

### splicing factor 1 (SF1) Rabbit Polyclonal Antibody

#### Product data:

Product Type:	Primary Antibodies
Applications:	WB
Recommended Dilution:	WB: 1:1000~1:2000 IHC: 1:50~1:200
Reactivity:	Human
Host:	Rabbit
Isotype:	IgG
Clonality:	Polyclonal
Immunogen:	Synthetic peptide, corresponding to Human SF1.
Specificity:	SF1 polyclonal antibody detects endogenous levels of SF1 protein.
Formulation:	Rabbit IgG, 1mg/ml in PBS with 0.02% sodium azide, 50% glycerol, pH7.4.
Concentration:	1mg/ml
Conjugation:	Unconjugated
Storage:	Store at 4°C short term. Aliquot and store at -20°C long term. Avoid freeze-thaw cycles.
Stability:	1 year
Predicted Protein Size:	~ 75 kDa
Gene Name:	splicing factor 1
Database Link:	<a href="#">Entrez Gene 7536 Human Q15637</a>

[View online »](#)

**Background:**

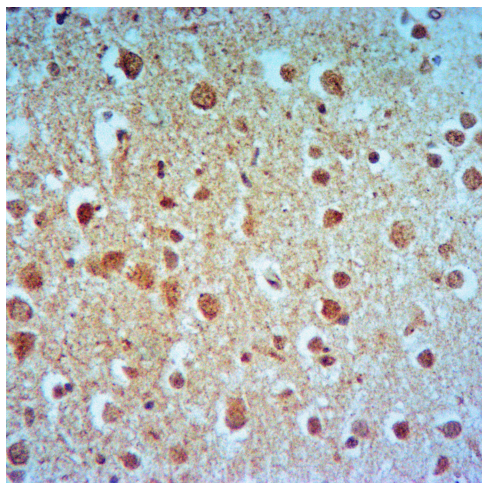
Mammalian splicing factor 1 (designated SF1, zinc finger protein 162, ZFM1, CW17R and mammalian branch point binding protein [mBBP]) specifically recognizes the seven-nucleotide branch point sequence located at 3' splice sites and participates in the assembly of early spliceosomal complexes. Splicing factor 1 functions as a transcriptional repressor and may control both proliferation and expression of pro-inflammatory gene products in smooth muscle cells. In addition, cytokine-induced downregulation of splicing factor 1 expression may contribute to the pathogenesis of hyperproliferative inflammatory diseases. The structure of splicing factor 1 contains a nuclear transport domain, a metal binding motif, and glutamine- and proline-rich regions. Human splicing factor 1 also exists as several different isoforms, H1-isoform and Bo-isoform, produced by alternative splicing events. The human splicing factor 1 gene is located on chromosome 11 close to the gene encoding Menin, the gene responsible for multiple endocrine neoplasia-type 1 (MEN1).

**Synonyms:**

BBP; Mammalian branch point-binding protein; mBBP; SF1; Splicing factor 1; Transcription factor ZFM1; ZFM1; Zinc finger gene in MEN1 locus; Zinc finger protein 162; ZNF162

**Note:**

For research use only, not for use in diagnostic procedure.

**Product images:**


Immunohistochemistry of paraffin-embedded Rat Brain using SF1 antibody at dilution of 1:50.