

## Product datasheet for **TA392549S**

### Androgen Receptor (AR) Rabbit Polyclonal Antibody

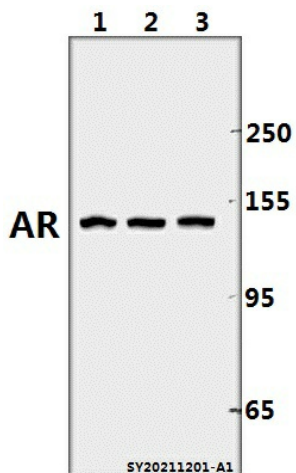
#### Product data:

Product Type:	Primary Antibodies
Applications:	IF, IHC, WB
Recommended Dilution:	WB: 1:2000~1:5000 IHC: 1:50~1:200 IF: 1:50~1:200
Reactivity:	Human, Mouse
Host:	Rabbit
Isotype:	IgG
Clonality:	Polyclonal
Immunogen:	Synthetic peptide, corresponding to Human AR.
Specificity:	AR polyclonal antibody detects endogenous levels of AR protein.
Formulation:	Rabbit IgG, 1mg/ml in PBS with 0.02% sodium azide, 50% glycerol, pH7.4.
Concentration:	1mg/ml
Conjugation:	Unconjugated
Storage:	Store at 4°C short term. Aliquot and store at -20°C long term. Avoid freeze-thaw cycles.
Stability:	1 year
Predicted Protein Size:	~ 140 kDa
Gene Name:	androgen receptor
Database Link:	<a href="#">Entrez Gene 367 Human P10275</a>
Background:	Androgen receptor (AR), a zinc finger transcription factor belonging to the nuclear receptor superfamily, is activated by phosphorylation and dimerization upon ligand binding. This promotes nuclear localization and binding of AR to androgen response elements in androgen target genes. Research studies have shown that AR plays a crucial role in several stages of male development and the progression of prostate cancer.
Synonyms:	Androgen receptor; AR; DHTR; Dihydrotestosterone receptor; NR3C4; Nuclear receptor subfamily 3 group C member 4
Note:	For research use only, not for use in diagnostic procedure.

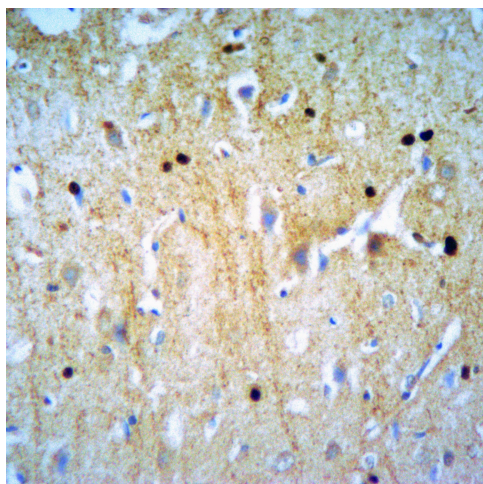


[View online »](#)

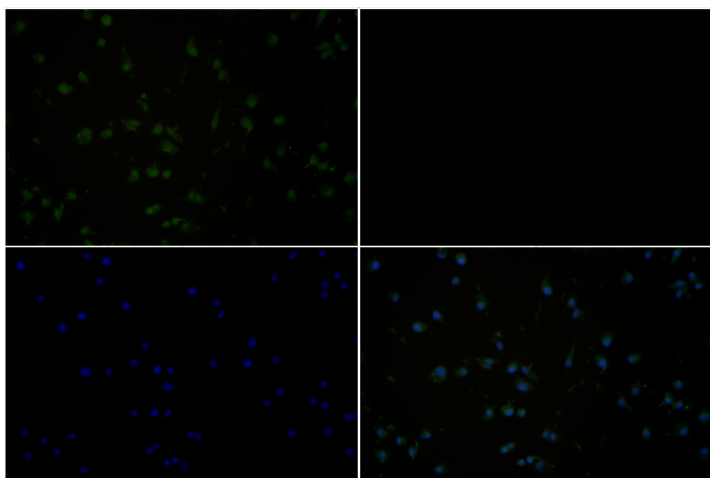
Product images:



Western blot (WB) analysis of AR polyclonal antibody at 1:2000 dilution Lane1:CT-26 whole cell lysate(40ug) Lane2:PC3 whole cell lysate(40ug) Lane3:HepG2 whole cell lysate(40ug)



Immunohistochemistry of paraffin-embedded Rat Brain using AR antibody at dilution of 1:50.



Immunofluorescence analysis of PC3 cells using AR antibody at dilution of 1:50.

