

## Product datasheet for **TA392543M**

### RSK1 p90 (RPS6KA1) Rabbit Polyclonal Antibody

#### Product data:

Product Type:	Primary Antibodies
Applications:	WB
Recommended Dilution:	WB: 1:1000~1:2000 IHC: 1:50~1:200
Reactivity:	Human
Host:	Rabbit
Isotype:	IgG
Clonality:	Polyclonal
Immunogen:	Synthetic phosphopeptide derived from human Rsk-1 around the phosphorylation site of Serine 380.
Specificity:	p-Rsk-1 (S380) polyclonal antibody detects endogenous levels of Rsk-1 protein only when phosphorylated at Ser380.
Formulation:	Rabbit IgG, 1mg/ml in PBS with 0.02% sodium azide, 50% glycerol, pH7.2
Concentration:	1mg/ml
Conjugation:	Unconjugated
Storage:	Store at 4°C short term. Aliquot and store at -20°C long term. Avoid freeze-thaw cycles.
Stability:	1 year
Predicted Protein Size:	~ 90 kDa
Gene Name:	ribosomal protein S6 kinase A1
Database Link:	<a href="#">Entrez Gene 6195 Human Q15418</a>
Background:	The family of ribosomal S6 kinases (Rsk), designated Rsk-1 (or MAPKAP kinase-1), Rsk-2 and Rsk-3, are intracellular serine/threonine kinases that are important signaling intermediates in response to a broad range of ligand activated receptor tyrosine kinases. A unique feature common to the members of the Rsk family is that each possesses two non-identical complete kinase catalytic domains. An additional Rsk protein, Rsk-4, shows a high level of homology to the three previously isolated members of the human Rsk family. Rsk-4 is most abundantly expressed in brain and kidney and plays a role in normal neuronal development.

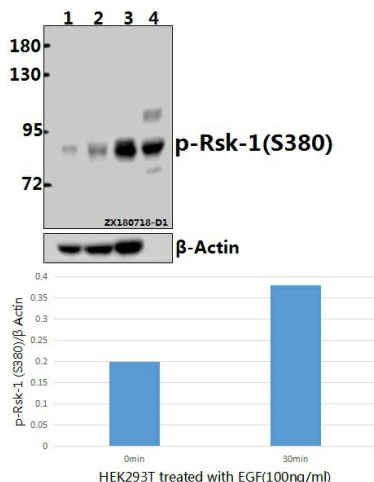


[View online »](#)

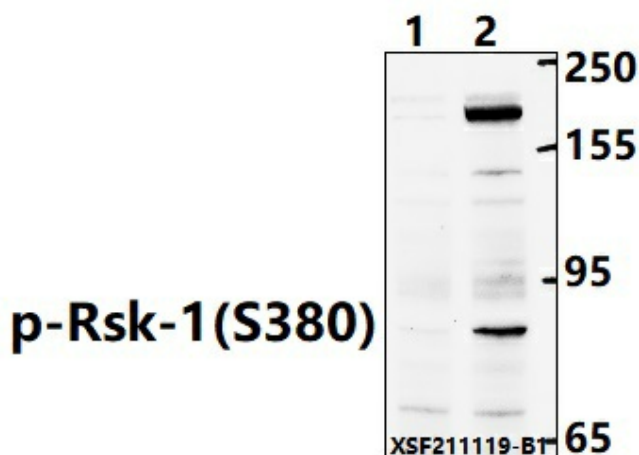
**Synonyms:** 90 kDa ribosomal protein S6 kinase 1; MAPK-activated protein kinase 1a; MAPKAPK-1a; MAPKAPK1A; MAPKAP kinase 1a; MAP kinase-activated protein kinase 1a; p90-RSK 1; p90RSK1; p90S6K; Ribosomal protein S6 kinase alpha-1; Ribosomal S6 kinase 1; RPS6KA1; RSK-1; RSK1; S6K-alpha-1; S6K- $\alpha$ 1; S6K  $\alpha$ 1; S6K $\alpha$ 1

**Note:** For research use only, not for use in diagnostic procedure.

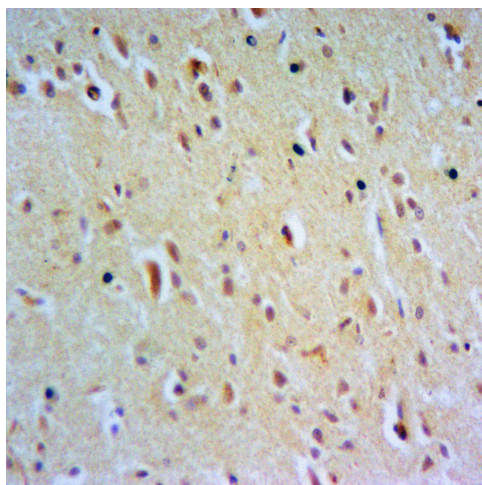
### Product images:



Western blot (WB) analysis of p-Rsk-1 (S380) pAb at 1:500 dilution Lane1:HEK293T whole cell lysate(40ug) Lane2:HEK293T treated with EGF(100ng/ml,30 minutes) whole cell lysate(40ug) Lane3:The Spleen tissue lysate of Mouse(40ug) Lane4:The Heart tissue lysate of Rat(40ug)



Western blot (WB) analysis of Rsk-1 (Phospho-S380) polyclonal antibody at 1:1000 dilution Lane1:HeLa treated with  $\lambda$ -phosphatase whole cell lysate(40ug) Lane2:HeLa whole cell lysate(40ug)



Immunohistochemistry of paraffin-embedded Rat Brain using p-Rsk-1 (S380) antibody at dilution of 1:50.