

Product datasheet for **TA392542S**

RSK1 p90 (RPS6KA1) Rabbit Polyclonal Antibody

Product data:

Product Type:	Primary Antibodies
Applications:	WB
Recommended Dilution:	WB: 1:500~1:1000 IHC: 1:50~1:200 IF: 1:50~1:200 IP: 1:50~1:200
Reactivity:	Human, Mouse, Rat
Host:	Rabbit
Isotype:	IgG
Clonality:	Polyclonal
Immunogen:	Synthetic phosphopeptide derived from human Rsk-1 around the phosphorylation site of Thr359/Ser363.
Specificity:	Rsk-1 (phospho-T359/S363) polyclonal antibody detects endogenous levels of Rsk-1 protein only when phosphorylated at Thr359/Ser363.
Formulation:	Rabbit IgG, 1mg/ml in PBS with 0.02% sodium azide, 50% glycerol, pH7.2
Concentration:	1mg/ml
Conjugation:	Unconjugated
Storage:	Store at 4°C short term. Aliquot and store at -20°C long term. Avoid freeze-thaw cycles.
Stability:	1 year
Predicted Protein Size:	~ 90 kDa
Gene Name:	ribosomal protein S6 kinase A1
Database Link:	Entrez Gene 6195 Human Q15418
Background:	The family of ribosomal S6 kinases (Rsk), designated Rsk-1 (or MAPKAP kinase-1), Rsk-2 and Rsk-3, are intracellular serine/threonine kinases that are important signaling intermediates in response to a broad range of ligand activated receptor tyrosine kinases. A unique feature common to the members of the Rsk family is that each possesses two non-identical complete kinase catalytic domains. An additional Rsk protein, Rsk-4, shows a high level of homology to the three previously isolated members of the human Rsk family. Rsk-4 is most abundantly expressed in brain and kidney and plays a role in normal neuronal development.



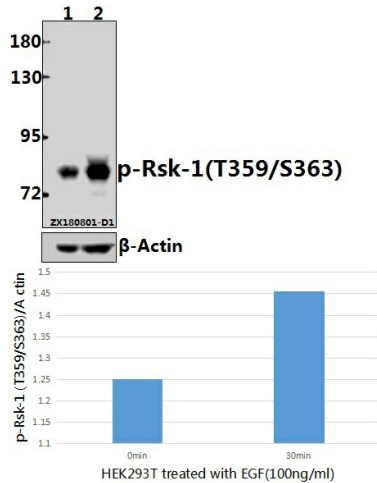
[View online »](#)

Synonyms:

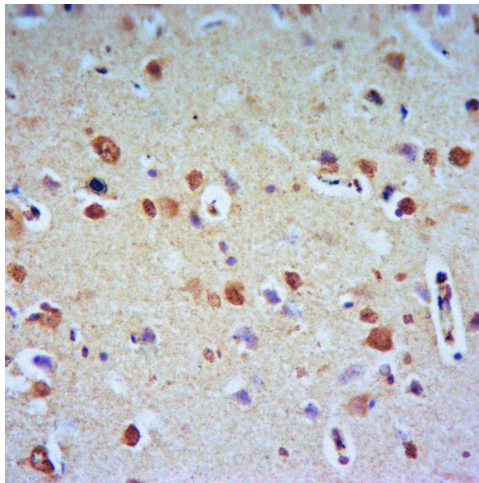
90 kDa ribosomal protein S6 kinase 1; MAPK-activated protein kinase 1a; MAPKAPK-1a; MAPKAPK1A; MAPKAP kinase 1a; MAP kinase-activated protein kinase 1a; p90-RSK 1; p90RSK1; p90S6K; Ribosomal protein S6 kinase alpha-1; Ribosomal S6 kinase 1; RPS6KA1; RSK-1; RSK1; S6K-alpha-1; S6K- α 1; S6K α 1; S6K α 1

Note:

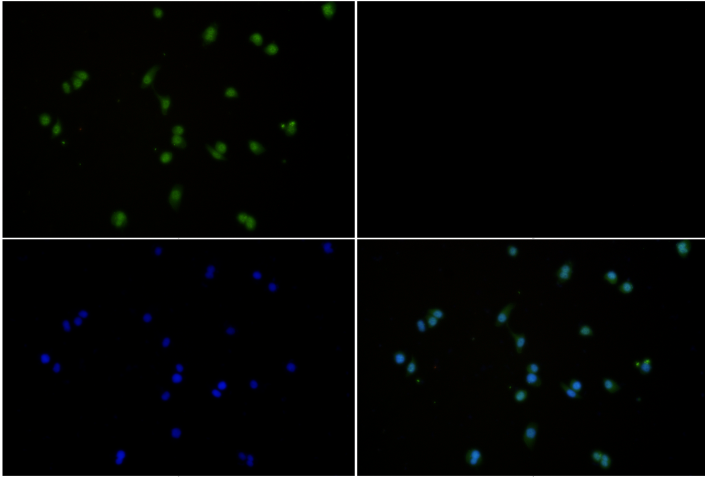
For research use only, not for use in diagnostic procedure.

Product images:


Western blot (WB) analysis of p-Rsk-1 (T359/S363) pAb at 1:2000 dilution Lane1:HEK293T whole cell lysate(40ug) Lane2:HEK293T treated with EGF(100ng/ml,30 minutes) whole cell lysate(40ug)

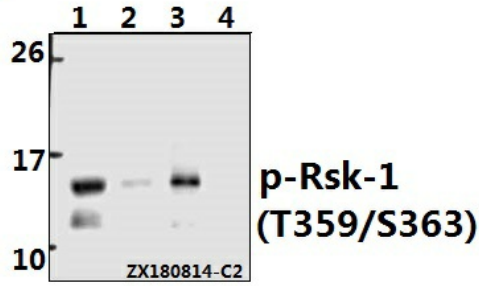


Immunohistochemistry of paraffin-embedded Rat Brain using Rsk-1 (phospho-T359/S363) antibody at dilution of 1:50.



Immunofluorescence analysis of CT26 cells using Rsk-1 (phospho-T359/S363) antibody at dilution of 1:50.

WB:



Immunoprecipitation of HepG2 cell lysate using p-Rsk-1 (T359/S363) pAb (Sepharose Bead Conjugate) #BD0048(lane 2 and lane 3) and Nonspecific IgG Control (Sepharose Bead Conjugate) #BD0048 (lane 4) .Lane 1 is 30% input. The western blot was probed using p-Rsk-1 (T359/S363) #[TA392542]. "↑"↑supernatant; "↓(deposition"

IP:

-	+	+	-	p-Rsk-1 (T359/S363) (BS4276)
-	-	-	+	IgG(Rabbit)
-	+	+	+	ProteinG- Agarose
	↑	↓	↓	