

## Product datasheet for **TA392539S**

### **IKB beta (NFKBIB) Rabbit Polyclonal Antibody**

#### **Product data:**

<b>Product Type:</b>	Primary Antibodies
<b>Applications:</b>	WB
<b>Recommended Dilution:</b>	WB: 1:500~1:1000 IHC: 1:50~1:200
<b>Reactivity:</b>	Human, Mouse, Rat
<b>Host:</b>	Rabbit
<b>Isotype:</b>	IgG
<b>Clonality:</b>	Polyclonal
<b>Immunogen:</b>	Synthetic peptide, corresponding to Human IκB-β.
<b>Specificity:</b>	IκB-β (Y188) polyclonal antibody detects endogenous levels of IκB-β protein.
<b>Formulation:</b>	Rabbit IgG, 1mg/ml in PBS with 0.02% sodium azide, 50% glycerol, pH7.2
<b>Concentration:</b>	1mg/ml
<b>Conjugation:</b>	Unconjugated
<b>Storage:</b>	Store at 4°C short term. Aliquot and store at -20°C long term. Avoid freeze-thaw cycles.
<b>Stability:</b>	1 year
<b>Predicted Protein Size:</b>	~ 52, 58 kDa
<b>Gene Name:</b>	NFKB inhibitor beta
<b>Database Link:</b>	<a href="#">Entrez Gene 4793 Human Q15653</a>
<b>Background:</b>	The NF-κB/Rel transcription factors are present in the cytosol in an inactive state complexed with the inhibitory IκB proteins. Activation occurs via phosphorylation of IκBα at Ser32 and Ser36 followed by proteasome-mediated degradation that results in the release and nuclear translocation of active NF-κB. IκBα phosphorylation and resulting Rel-dependent transcription are activated by a highly diverse group of extracellular signals including inflammatory cytokines, growth factors, and chemokines. Kinases that phosphorylate IκB at these activating sites have been identified. The regulation of IκBβ and IκBε is similar to that of IκBα. However, the phosphorylation and ubiquitin-mediated degradation of these proteins occurs with much slower kinetics. IKK phosphorylation of IκBβ occurs at Ser19 and Ser23, while IκBε can be phosphorylated at Ser18 and Ser22.

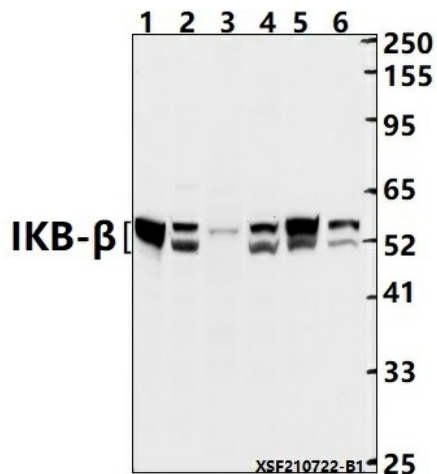


[View online »](#)

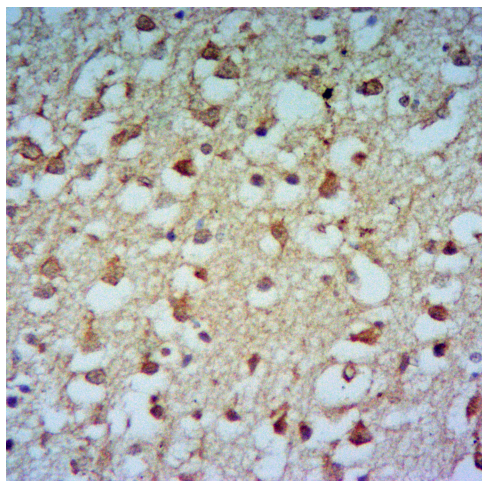
**Synonyms:** I-kappa-B-beta; IkappaBbeta; Ikb-B; Ikb-beta; IKBB; NF-kappa-BIB; NF-kappa-B inhibitor beta; NFKBIB; Thyroid receptor-interacting protein 9; TR-interacting protein 9; TRIP-9; TRIP9

**Note:** For research use only, not for use in diagnostic procedure.

**Product images:**



Western blot (WB) analysis of IKB- $\beta$  (Y188) polyclonal antibody at 1:500 dilution  
 Lane1:EC9706 whole cell lysate(60ug) Lane2:HepG2 whole cell lysate(40ug) Lane3:PC12 whole cell lysate(60ug) Lane4:HEK293T whole cell lysate(60ug) Lane5:CT-26 whole cell lysate(40ug) Lane6:U-87MG whole cell lysate(60ug)



Immunohistochemistry of paraffin-embedded Rat Brain using IKB- $\beta$  (Y188) antibody at dilution of 1:50.