

Product datasheet for **TA392538S**

IKB alpha (NFKBIA) Rabbit Polyclonal Antibody

Product data:

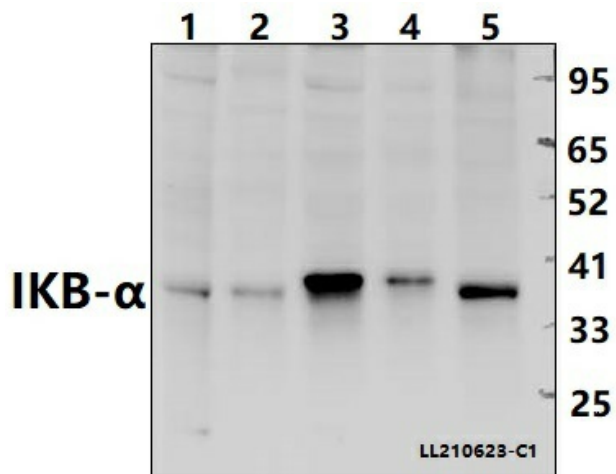
Product Type:	Primary Antibodies
Applications:	IF, IHC, WB
Recommended Dilution:	WB: 1:500~1:1000 IHC: 1:50~1:200 IF: 1:50~1:200
Reactivity:	Human, Mouse, Rat
Host:	Rabbit
Isotype:	IgG
Clonality:	Polyclonal
Immunogen:	Synthetic peptide, corresponding to Human IκB-α.
Specificity:	IκB-α (S32/S36) polyclonal antibody detects endogenous levels of IκB-α protein.
Formulation:	Rabbit IgG, 1mg/ml in PBS with 0.02% sodium azide, 50% glycerol, pH7.2
Concentration:	1mg/ml
Conjugation:	Unconjugated
Storage:	Store at 4°C short term. Aliquot and store at -20°C long term. Avoid freeze-thaw cycles.
Stability:	1 year
Predicted Protein Size:	~ 36 kDa
Gene Name:	NFKB inhibitor alpha
Database Link:	Entrez Gene 4792 Human P25963
Background:	The NF-κB/Rel transcription factors are present in the cytosol in an inactive state complexed with the inhibitory IκB proteins. Activation occurs via phosphorylation of IκBα at Ser32 and Ser36 followed by proteasome-mediated degradation that results in the release and nuclear translocation of active NF-κB. IκBα phosphorylation and resulting Rel-dependent transcription are activated by a highly diverse group of extracellular signals including inflammatory cytokines, growth factors, and chemokines. Kinases that phosphorylate IκB at these activating sites have been identified.
Synonyms:	I-kappa-B-alpha; IkappaBalphα; IκB-alpha; IKBA; MAD4; Major histocompatibility complex enhancer-binding protein MAD3; NF-kappa-B inhibitor alpha; NFKBI; NFKBIA



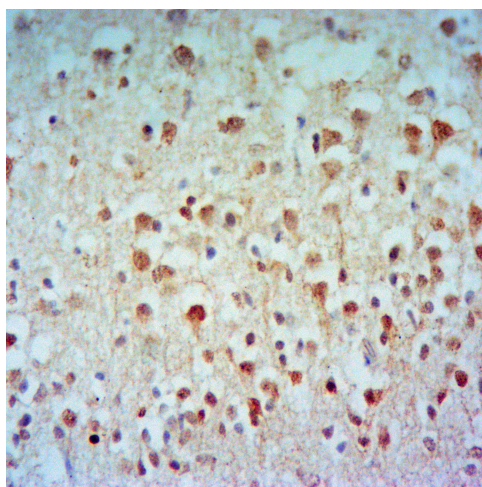
[View online »](#)

Note: For research use only, not for use in diagnostic procedure.

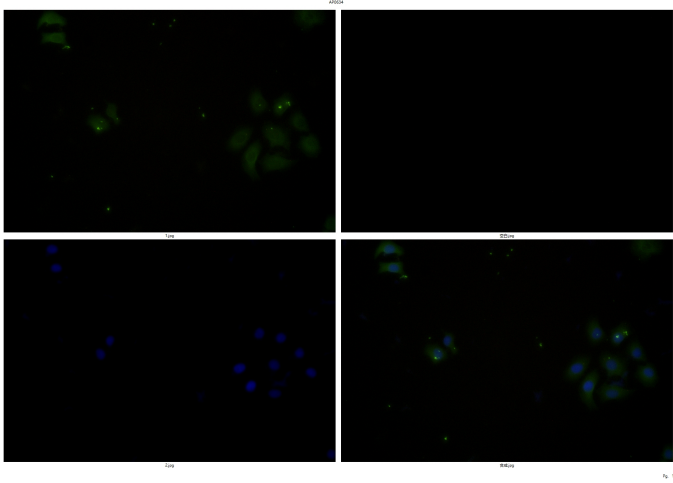
Product images:



Western blot (WB) analysis of IKB- α (S32/S36) polyclonal antibody at 1:5000 dilution Lane1:CT-26 whole cell lysate(40ug) Lane2:PC12 whole cell lysate(40ug) Lane3:A549 whole cell lysate(40ug) Lane4:HepG2 whole cell lysate(40ug) Lane5:HeLa whole cell lysate(40ug)



Immunohistochemistry of paraffin-embedded Rat Brain using IKB- α (S32/S36) antibody at dilution of 1:50.



Immunofluorescence analysis of A549 cells using IKB- α (S32/S36) antibody at dilution of 1:50.