

Product datasheet for **TA392538M**

IKB alpha (NFKBIA) Rabbit Polyclonal Antibody

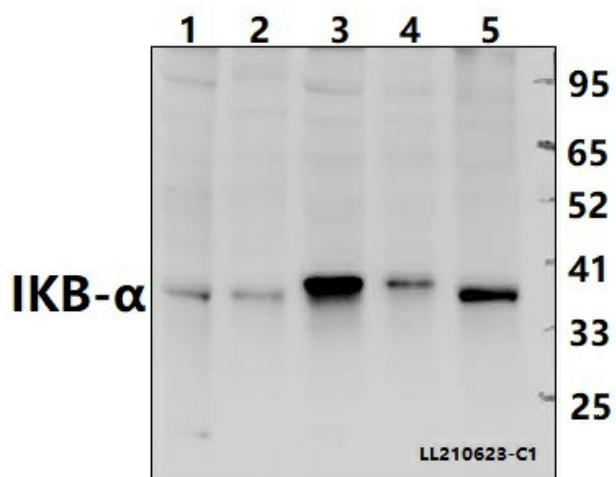
Product data:

Product Type:	Primary Antibodies
Applications:	IF, IHC, WB
Recommended Dilution:	WB: 1:500~1:1000 IHC: 1:50~1:200 IF: 1:50~1:200
Reactivity:	Human, Mouse, Rat
Host:	Rabbit
Isotype:	IgG
Clonality:	Polyclonal
Immunogen:	Synthetic peptide, corresponding to Human IKB- α .
Specificity:	IKB- α (S32/S36) polyclonal antibody detects endogenous levels of IKB- α protein.
Formulation:	Rabbit IgG, 1mg/ml in PBS with 0.02% sodium azide, 50% glycerol, pH7.2
Concentration:	1mg/ml
Conjugation:	Unconjugated
Storage:	Store at 4°C short term. Aliquot and store at -20°C long term. Avoid freeze-thaw cycles.
Stability:	1 year
Predicted Protein Size:	~ 36 kDa
Gene Name:	NFKB inhibitor alpha
Database Link:	Entrez Gene 4792 Human P25963
Background:	The NF- κ B/Rel transcription factors are present in the cytosol in an inactive state complexed with the inhibitory I κ B proteins. Activation occurs via phosphorylation of I κ B α at Ser32 and Ser36 followed by proteasome-mediated degradation that results in the release and nuclear translocation of active NF- κ B. I κ B α phosphorylation and resulting Rel-dependent transcription are activated by a highly diverse group of extracellular signals including inflammatory cytokines, growth factors, and chemokines. Kinases that phosphorylate I κ B at these activating sites have been identified.
Synonyms:	I-kappa-B-alpha; IkappaBalpaha; I κ B-alpha; IKBA; MAD4; Major histocompatibility complex enhancer-binding protein MAD3; NF-kappa-B inhibitor alpha; NFKBI; NFKBIA

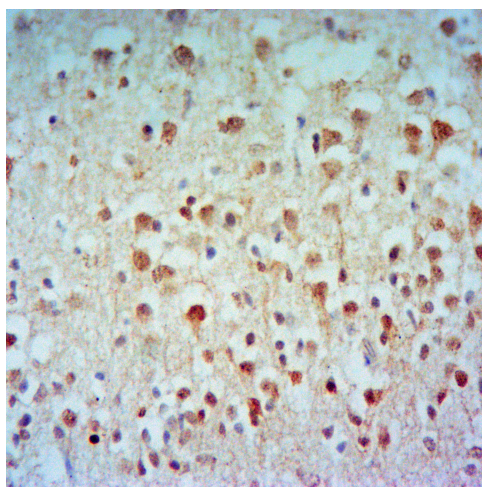

[View online »](#)

Note: For research use only, not for use in diagnostic procedure.

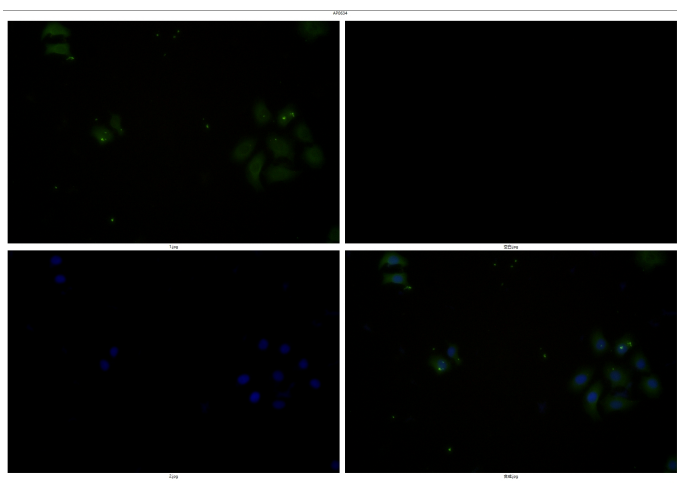
Product images:



Western blot (WB) analysis of IKB- α (S32/S36) polyclonal antibody at 1:5000 dilution Lane1:CT-26 whole cell lysate(40ug) Lane2:PC12 whole cell lysate(40ug) Lane3:A549 whole cell lysate(40ug) Lane4:HepG2 whole cell lysate(40ug) Lane5:Hela whole cell lysate(40ug)



Immunohistochemistry of paraffin-embedded Rat Brain using IKB- α (S32/S36) antibody at dilution of 1:50.



Immunofluorescence analysis of A549 cells using IKB-α (S32/S36) antibody at dilution of 1:50.