

## Product datasheet for **TA392534M**

### IKK gamma (IKBKG) Rabbit Polyclonal Antibody

#### Product data:

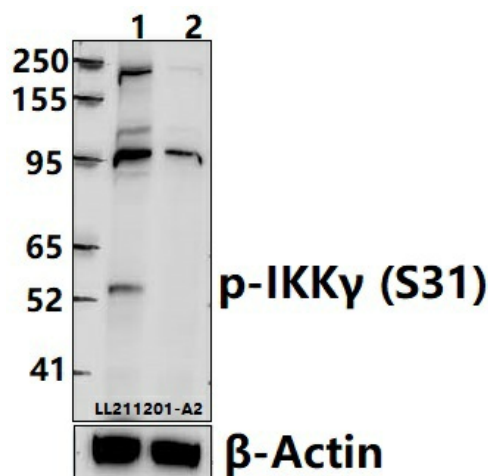
Product Type:	Primary Antibodies
Applications:	IF, IHC, WB
Recommended Dilution:	WB: 1:1000~1:2000 IHC: 1:50~1:200 IF: 1:50~1:200
Reactivity:	Human
Host:	Rabbit
Isotype:	IgG
Clonality:	Polyclonal
Immunogen:	Synthetic phosphopeptide derived from human IKKy around the phosphorylation site of Serine 31.
Specificity:	IKKy (Phospho-S31) polyclonal antibody detects endogenous levels of IKKy protein only when phosphorylated at Ser31.
Formulation:	Rabbit IgG, 1mg/ml in PBS with 0.02% sodium azide, 50% glycerol, pH7.2.
Concentration:	1mg/ml
Conjugation:	Unconjugated
Storage:	Store at 4°C short term. Aliquot and store at -20°C long term. Avoid freeze-thaw cycles.
Stability:	1 year
Predicted Protein Size:	~ 54 kDa
Gene Name:	inhibitor of kappa light polypeptide gene enhancer in B-cells, kinase gamma
Database Link:	<a href="#">Entrez Gene 8517 Human Q9Y6K9</a>
Background:	Activation of NFkB requires that Ikb be phosphorylated on specific serine residues, which results in targeted degradation of Ikb. Ikb kinase $\alpha$ (IKK $\alpha$ ), previously designated CHUK, interacts with Ikb- $\alpha$ and specifically phosphorylates I $\alpha$ Ba on Serine 32 and 36, the sites that trigger its degradation. IKK $\alpha$ appears to be critical for NFkB activation in response to proinflammatory cytokines. Phosphorylation of Ikb by IKK $\alpha$ is stimulated by the NFkB inducing kinase (NIK), which itself is a central regulator for NFkB activation in response to TNF and IL-1. The functional IKK complex contains three subunits, IKK $\alpha$ , IKK $\beta$ and IKKy (also designated NEMO), and each appear to make essential contributions to Ikb phosphorylation.


[View online »](#)

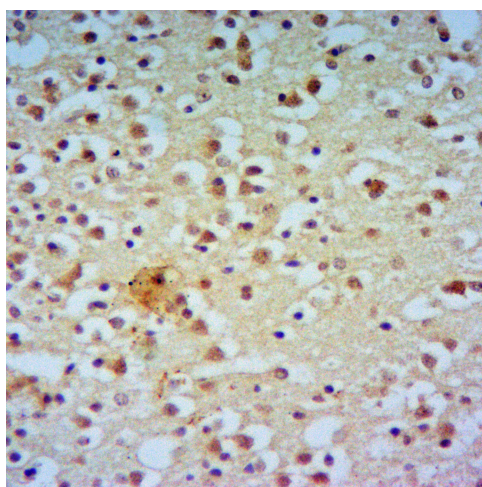
**Synonyms:** FIP-3; FIP3, NEMO; I-kappa-B kinase subunit gamma; IKBKG; Ikb kinase-associated protein 1; Ikb kinase subunit gamma; IKK-gamma; IKKAP1; IKKG; Inhibitor of nuclear factor kappa-B kinase subunit gamma; NEMO; NF-kappa-B essential modifier; NF-kappa-B essential modulator

**Note:** For research use only, not for use in diagnostic procedure.

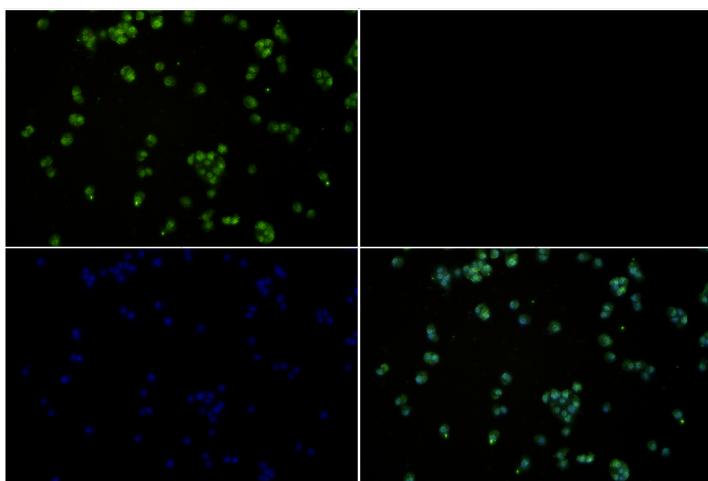
**Product images:**



Western blot (WB) analysis of IKK $\gamma$  (Phospho-S31) polyclonal antibody at 1:2000 dilution  
Lane1:HeLa whole cell lysate(40ug) Lane2:HeLa treated with  $\lambda$ -phosphatase whole cell lysate(40ug)



Immunohistochemistry of paraffin-embedded Human Brain using IKK $\gamma$  (Phospho-S31)antibody at dilution of 1:50.



Immunofluorescence analysis of HeLa cells using IKK $\gamma$  (Phospho-S31) antibody at dilution of 1:50.