

## Product datasheet for **TA392532M**

### MEK1 (MAP2K1) Rabbit Polyclonal Antibody

#### Product data:

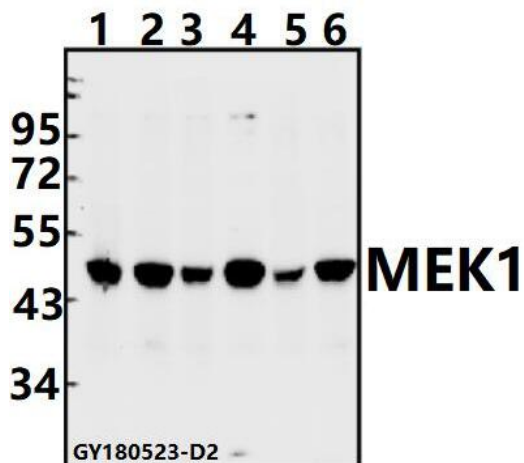
Product Type:	Primary Antibodies
Applications:	WB
Recommended Dilution:	WB: 1:500~1:1000 IHC: 1:50~1:200
Reactivity:	Human, Mouse, Rat
Host:	Rabbit
Isotype:	IgG
Clonality:	Polyclonal
Immunogen:	Synthetic peptide, corresponding to Human MEK1.
Specificity:	MEK1(Ser298) polyclonal antibody detects endogenous levels of MEK1 protein.
Formulation:	Rabbit IgG, 1mg/ml in PBS with 0.02% sodium azide, 50% glycerol, pH7.2
Concentration:	1mg/ml
Conjugation:	Unconjugated
Storage:	Store at 4°C short term. Aliquot and store at -20°C long term. Avoid freeze-thaw cycles.
Stability:	1 year
Predicted Protein Size:	~ 43 kDa
Gene Name:	mitogen-activated protein kinase kinase 1
Database Link:	<a href="#">Entrez Gene 5604 Human Q02750</a>
Background:	<p>MEK1 (Mitogen activated protein kinase kinase 1) catalyzes the concomitant phosphorylation of a threonine and a tyrosine residue in a Thr-Glu-Tyr sequence located in MAP kinases. MEK1 activates ERK1 and ERK2 MAP kinases. Mitogen activated protein kinase kinase 2 (MEK2 or MAPKK2) is a member of a family of tyrosine/threonine protein kinases that activate the ERK1 and 2 and MAPK enzymes by phosphorylating both residues within the threonine/glutamate/tyrosine (TEY) motif in the activation loop. MEK1 and 2 are also activated by dual phosphorylation, which occurs on serine 218 and 222, in the activation loop of the MEK. Threonine 292 of MEK1 is phosphorylated by ERK 2, which serves as a negative feedback loop by suppressing activation of MEK1.</p>

[View online »](#)

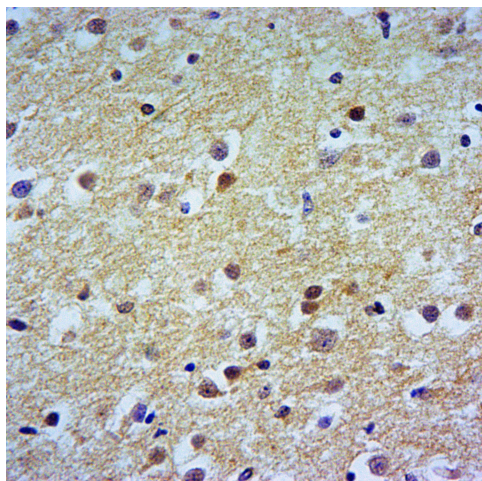
**Synonyms:** Dual specificity mitogen-activated protein kinase kinase 1; ERK activator kinase 1; MAP2K1; MAPK/ERK kinase 1; MAP kinase kinase 1; MAPKK 1; MEK-1; MEK 1; MKK1; PRKMK1

**Note:** For research use only, not for use in diagnostic procedure.

**Product images:**



Western blot (WB) analysis of MEK1 (Ser298) pAb at 1:500 dilution Lane1:A549 whole cell lysate(40ug) Lane2:SGC7901 whole cell lysate(40ug) Lane3:H1792 whole cell lysate(40ug) Lane4:U-87MG whole cell lysate(40ug) Lane5:C6 whole cell lysate(40ug) Lane6:CT26 whole cell lysate(40ug)



Immunohistochemistry of paraffin-embedded Rat Brain using MEK1(Ser298) antibody at dilution of 1:50.