

Product datasheet for **TA392531**

MEK1 (MAP2K1) Rabbit Polyclonal Antibody

Product data:

Product Type:	Primary Antibodies
Applications:	IF, IHC, WB
Recommended Dilution:	WB: 1:1000~1:2000 IHC: 1:50~1:200 IF: 1:50~1:200
Reactivity:	Human, Rat, Mouse
Host:	Rabbit
Isotype:	IgG
Clonality:	Polyclonal
Immunogen:	Synthetic phosphopeptide derived from human MEK1 around the phosphorylation site of Serine 298.
Specificity:	MEK1 (Phospho-S298) polyclonal antibody detects endogenous levels of MEK1 protein only when phosphorylated at Ser298.
Formulation:	Rabbit IgG, 1mg/ml in PBS with 0.02% sodium azide, 50% glycerol, pH7.2.
Concentration:	1mg/ml
Conjugation:	Unconjugated
Storage:	Store at 4°C short term. Aliquot and store at -20°C long term. Avoid freeze-thaw cycles.
Stability:	1 year
Predicted Protein Size:	~ 45 kDa
Gene Name:	mitogen-activated protein kinase kinase 1
Database Link:	Entrez Gene 5604 Human Q02750



[View online »](#)

Background:

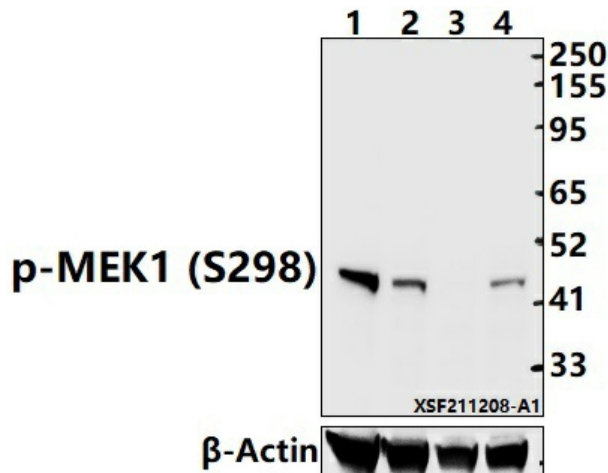
MEK1 (Mitogen activated protein kinase kinase 1) catalyzes the concomitant phosphorylation of a threonine and a tyrosine residue in a Thr-Glu-Tyr sequence located in MAP kinases. MEK1 activates ERK1 and ERK2 MAP kinases. Mitogen activated protein kinase kinase 2 (MEK2 or MAPKK2) is a member of a family of tyrosine/threonine protein kinases that activate the ERK1 and 2 and MAPK enzymes by phosphorylating both residues within the threonine/glutamate/tyrosine (TEY) motif in the activation loop. MEK1 and 2 are also activated by dual phosphorylation, which occurs on serine 218 and 222, in the activation loop of the MEK. Threonine 292 of MEK1 is phosphorylated by ERK 2, which serves as a negative feedback loop by suppressing activation of MEK1.

Synonyms:

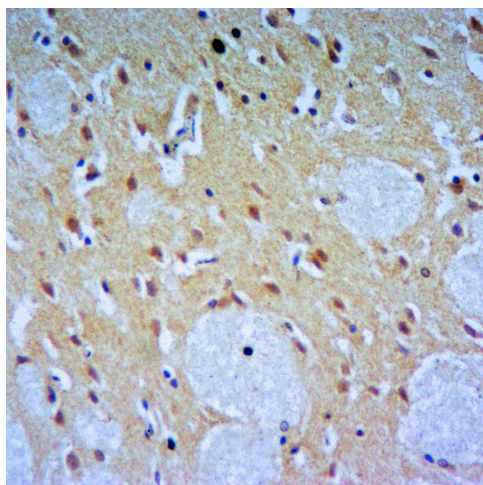
Dual specificity mitogen-activated protein kinase kinase 1; ERK activator kinase 1; MAP2K1; MAPK/ERK kinase 1; MAP kinase kinase 1; MAPKK 1; MEK-1; MEK 1; MKK1; PRKMK1

Note:

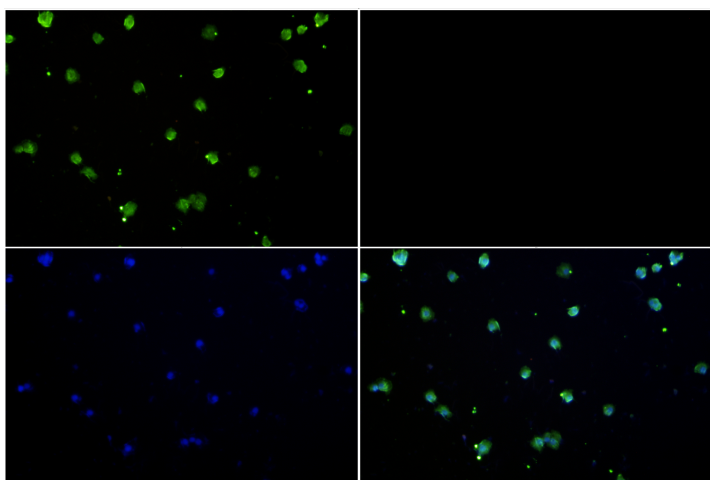
For research use only, not for use in diagnostic procedure.

Product images:

Western blot (WB) analysis of MEK1 (Phospho-S298) polyclonal antibody at 1:1000 dilution
Lane 1: PMVEC whole cell lysate (40ug) Lane 2: BV2 whole cell lysate (40ug) Lane 3: HeLa treated with λ -phosphatase whole cell lysate (40ug) Lane 4: HeLa whole cell lysate (40ug)



Immunohistochemistry of paraffin-embedded Rat Brain using MEK1 (Phospho-S298) antibody at dilution of 1:50.



Immunofluorescence analysis of HeLa cells using MEK1 (Phospho-S298) antibody at dilution of 1:50.