

Product datasheet for TA392530M

NF-κB p65 (RELA) Rabbit Polyclonal Antibody

Product data:

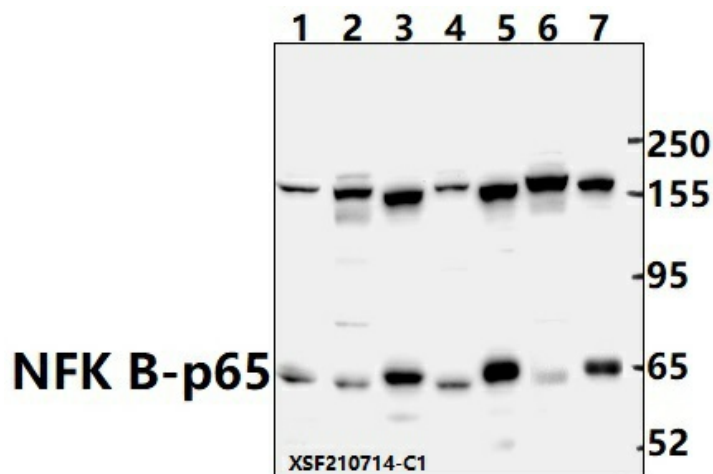
Product Type:	Primary Antibodies
Applications:	WB
Recommended Dilution:	WB: 1:500~1:1000 IHC: 1:50~1:200 IP: 1:50~1:200 IF: 1:50~1:200
Reactivity:	Human, Mouse, Rat
Host:	Rabbit
Isotype:	IgG
Clonality:	Polyclonal
Immunogen:	Synthetic peptide, corresponding to Human NFKB-p65.
Specificity:	NFKB-p65 polyclonal antibody detects endogenous levels of NFKB-p65 protein.
Formulation:	PBS with 0.05% proclin300, 50% glycerol, pH7.3.
Concentration:	1mg/ml
Conjugation:	Unconjugated
Storage:	Store at 4°C short term. Aliquot and store at -20°C long term. Avoid freeze-thaw cycles.
Stability:	1 year
Predicted Protein Size:	~ 65 kDa
Gene Name:	RELA proto-oncogene, NF-κB subunit
Database Link:	Entrez Gene 5970 Human Q04206
Background:	Transcription factors of the nuclear factor κB (NF-κB)/Rel family play a pivotal role in inflammatory and immune responses. There are five family members in mammals: RelA, c-Rel, RelB, NF-κB1 (p105/p50), and NF-κB2 (p100/p52). Both p105 and p100 are proteolytically processed by the proteasome to produce p50 and p52, respectively. Rel proteins bind p50 and p52 to form dimeric complexes that bind DNA and regulate transcription. In unstimulated cells, NF-κB is sequestered in the cytoplasm by IκB inhibitory proteins. NF-κB-activating agents can induce the phosphorylation of IκB proteins, targeting them for rapid degradation through the ubiquitin-proteasome pathway and releasing NF-κB to enter the nucleus where it regulates gene expression. NIK and IKKα (IKK1) regulate the phosphorylation and processing of NF-κB2 (p100) to produce p52, which translocates to the nucleus.


[View online »](#)

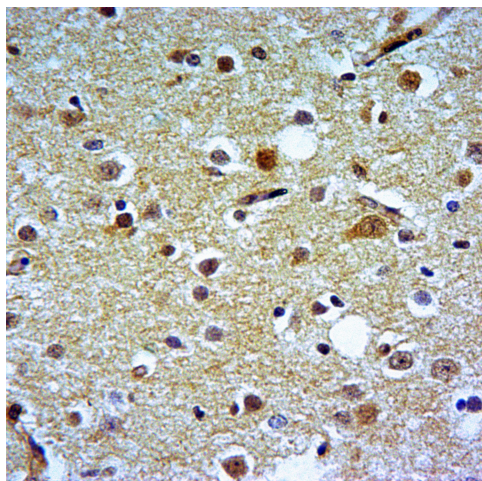
Synonyms: NFKB3; Nuclear factor NF-kappa-B p65 subunit; Nuclear factor of kappa light polypeptide gene enhancer in B-cells 3; RELA; Transcription factor p65

Note: For research use only, not for use in diagnostic procedure.

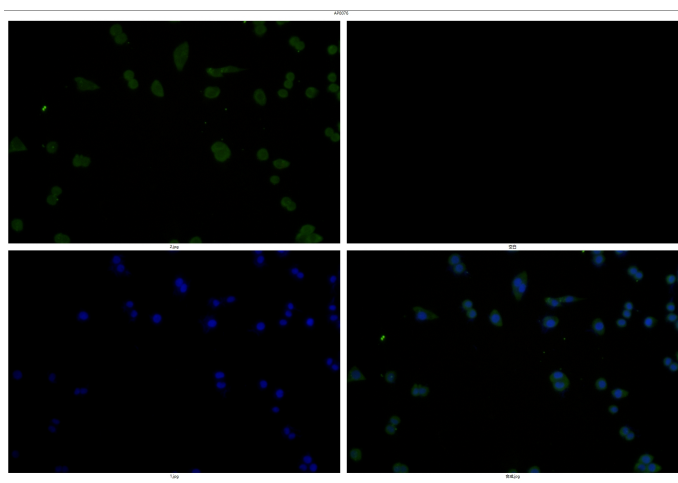
Product images:



Western blot (WB) analysis of NFK B-p65 polyclonal antibody at 1:500 dilution Lane1:C6 whole cell lysate(40ug) Lane2:BV2 whole cell lysate(40ug) Lane3:A549 whole cell lysate(40ug) Lane4:HeLa whole cell lysate(40ug) Lane5:HepG2 whole cell lysate(40ug) Lane6:SHSY5Y whole cell lysate(60ug) Lane7:EC9706 whole cell lysate(30ug)



Immunohistochemistry of paraffin-embedded Rat Brain using NFKB-p65 antibody at dilution of 1:50.



Immunofluorescence analysis of MCF-7 cells using NFKB-p65 antibody at dilution of 1:50.