

## Product datasheet for **TA392528S**

### GCNF (NR6A1) Rabbit Polyclonal Antibody

#### Product data:

Product Type:	Primary Antibodies
Applications:	WB
Recommended Dilution:	WB: 1:2000~1:5000
Reactivity:	Human
Host:	Rabbit
Isotype:	IgG
Clonality:	Polyclonal
Immunogen:	Synthetic peptide, corresponding to Human NR6A1.
Specificity:	NR6A1 polyclonal antibody detects endogenous levels of NR6A1 protein.
Formulation:	Rabbit IgG, 1mg/ml in PBS with 0.02% sodium azide, 50% glycerol, pH7.2.
Concentration:	1mg/ml
Conjugation:	Unconjugated
Storage:	Store at 4°C short term. Aliquot and store at -20°C long term. Avoid freeze-thaw cycles.
Stability:	1 year
Predicted Protein Size:	~ 50 kDa
Gene Name:	nuclear receptor subfamily 6 group A member 1
Database Link:	<a href="#">Entrez Gene 2649 Human Q15406</a>
Background:	GCNF (Germ Cell Nuclear Factor), also known as NR6A1 (Nuclear Receptor Subfamily 6 Group A member), is an orphan member of the nuclear receptor gene superfamily. It has been shown to be expressed in the nervous system during development and during specific stages in maturing germ cells of the ovary and testis in the adult, and has probable roles in gametogenesis, neurogenesis, and normal embryonic development during gastrulation. Inactivation of GCNF in mouse results in abnormal posterior development, impaired midbrain development, insufficient closure of the neural tube, and eventual embryonic death. GCNF has been shown to be a repressor of OCT-4 and of the protamine genes and plays a critical role in the control of gene expression during embryogenesis and spermatogenesis.

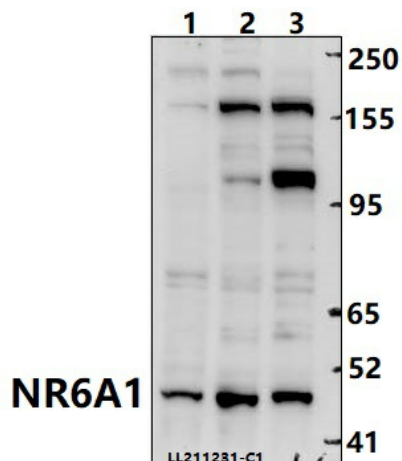


[View online »](#)

**Synonyms:** GCNF; Germ cell nuclear factor; hGCNF; hRTR; NR6A1; Nuclear receptor subfamily 6 group A member 1; Retinoid receptor-related testis-specific receptor; RTR

**Note:** For research use only, not for use in diagnostic procedure.

**Product images:**



Western blot (WB) analysis of NR6A1 polyclonal antibody at 1:2000 dilution Lane1:Hela whole cell lysate(40ug) Lane2:HepG2 whole cell lysate(40ug) Lane3:K562 whole cell lysate(40ug)