

## Product datasheet for **TA392521S**

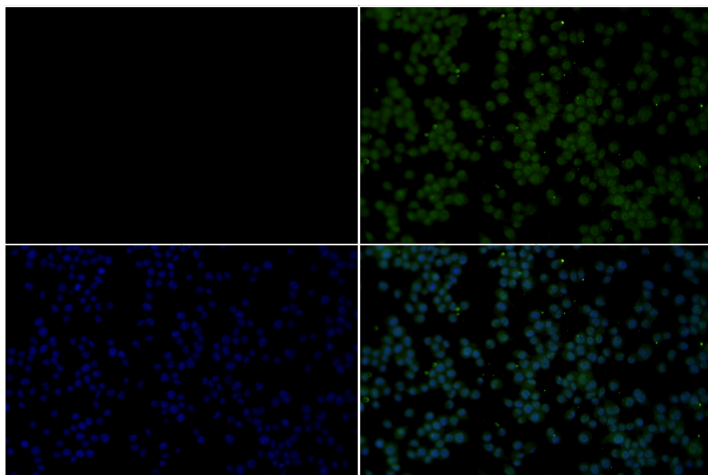
### **Bcl x (BCL2L1) Rabbit Polyclonal Antibody**

#### **Product data:**

<b>Product Type:</b>	Primary Antibodies
<b>Applications:</b>	IF, WB
<b>Recommended Dilution:</b>	WB: 1:5000~1:10000 IF: 1:50~1:200
<b>Reactivity:</b>	Human, Rat, Mouse
<b>Host:</b>	Rabbit
<b>Isotype:</b>	IgG
<b>Clonality:</b>	Polyclonal
<b>Immunogen:</b>	Synthetic peptide, corresponding to Human BCL-XL.
<b>Specificity:</b>	BCL-XL(Ab-62) polyclonal antibody detects endogenous levels of BCL-XL protein.
<b>Formulation:</b>	Rabbit IgG, 1mg/ml in PBS with 0.02% sodium azide, 50% glycerol, pH7.2.
<b>Concentration:</b>	1mg/ml
<b>Conjugation:</b>	Unconjugated
<b>Storage:</b>	Store at 4°C short term. Aliquot and store at -20°C long term. Avoid freeze-thaw cycles.
<b>Stability:</b>	1 year
<b>Predicted Protein Size:</b>	~ 26 kDa
<b>Gene Name:</b>	BCL2 like 1
<b>Database Link:</b>	<a href="#">Entrez Gene 598 Human Q07817</a>
<b>Background:</b>	Bcl-xL prevents apoptosis through two different mechanisms: heterodimerization with an apoptotic protein inhibits its apoptotic effect and formation of mitochondrial outer membrane pores help maintain a normal membrane state under stressful conditions. Bcl-xL is phosphorylated by JNK following treatment with microtubule-damaging agents, such as paclitaxel, vinblastine, and nocodazole.
<b>Synonyms:</b>	Apoptosis regulator Bcl-X; Bcl-2-like protein 1; Bcl2-L-1; BCL2L; BCL2L1; BCLX
<b>Note:</b>	For research use only, not for use in diagnostic procedure.



[View online »](#)

**Product images:**

Immunofluorescence analysis of BV2 cells using BCL-XL antibody at dilution of 1:50.