

Product datasheet for **TA392521**

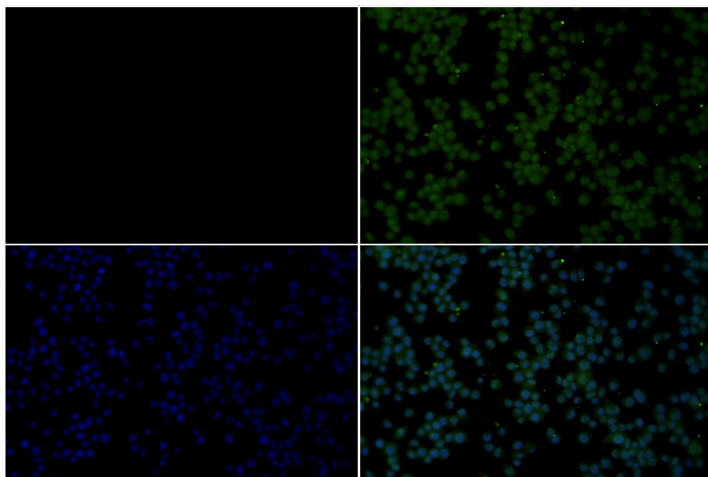
Bcl x (BCL2L1) Rabbit Polyclonal Antibody

Product data:

Product Type:	Primary Antibodies
Applications:	IF, WB
Recommended Dilution:	WB: 1:5000~1:10000 IF: 1:50~1:200
Reactivity:	Human, Rat, Mouse
Host:	Rabbit
Isotype:	IgG
Clonality:	Polyclonal
Immunogen:	Synthetic peptide, corresponding to Human BCL-XL.
Specificity:	BCL-XL(Ab-62) polyclonal antibody detects endogenous levels of BCL-XL protein.
Formulation:	Rabbit IgG, 1mg/ml in PBS with 0.02% sodium azide, 50% glycerol, pH7.2.
Concentration:	1mg/ml
Conjugation:	Unconjugated
Storage:	Store at 4°C short term. Aliquot and store at -20°C long term. Avoid freeze-thaw cycles.
Stability:	1 year
Predicted Protein Size:	~ 26 kDa
Gene Name:	BCL2 like 1
Database Link:	Entrez Gene 598 Human Q07817
Background:	Bcl-xL prevents apoptosis through two different mechanisms: heterodimerization with an apoptotic protein inhibits its apoptotic effect and formation of mitochondrial outer membrane pores help maintain a normal membrane state under stressful conditions. Bcl-xL is phosphorylated by JNK following treatment with microtubule-damaging agents, such as paclitaxel, vinblastine, and nocodazole.
Synonyms:	Apoptosis regulator Bcl-X; Bcl-2-like protein 1; Bcl2-L-1; BCL2L; BCL2L1; BCLX
Note:	For research use only, not for use in diagnostic procedure.



[View online »](#)

Product images:

Immunofluorescence analysis of BV2 cells using BCL-XL antibody at dilution of 1:50.