

Product datasheet for **TA392520S**

cIAP2 (BIRC3) Rabbit Polyclonal Antibody

Product data:

Product Type:	Primary Antibodies
Applications:	WB
Recommended Dilution:	WB: 1:1000~1:2000
Reactivity:	Rat, Mouse
Host:	Rabbit
Isotype:	IgG
Clonality:	Polyclonal
Immunogen:	Synthetic peptide, corresponding to Human c-IAP2.
Specificity:	c-IAP2 polyclonal antibody detects endogenous levels of c-IAP2 protein.
Formulation:	Rabbit IgG, 1mg/ml in PBS with 0.02% sodium azide, 50% glycerol, pH7.2.
Concentration:	1mg/ml
Conjugation:	Unconjugated
Storage:	Store at 4°C short term. Aliquot and store at -20°C long term. Avoid freeze-thaw cycles.
Stability:	1 year
Predicted Protein Size:	~ 68 kDa
Gene Name:	baculoviral IAP repeat containing 3
Database Link:	Q13489
Background:	The inhibitor of apoptosis protein (IAP) family consists of an evolutionarily conserved group of apoptosis inhibitors containing a conserved 70 amino acid BIR (baculovirus inhibitor repeat) domain. Human members of this family include c-IAP1, c-IAP2, XIAP, survivin, livin, and NAIP. Overexpression of IAP family members, particularly survivin and livin, in cancer cell lines and primary tumors suggests an important role for these proteins in cancer progression. In general, the IAP proteins function through direct interactions to inhibit the activity of several caspases, including caspase-3, caspase-7, and caspase-9. In addition, binding of IAP family members to the mitochondrial protein Smac blocks their interaction with caspase-9, thereby allowing the processing and activation of the caspase.

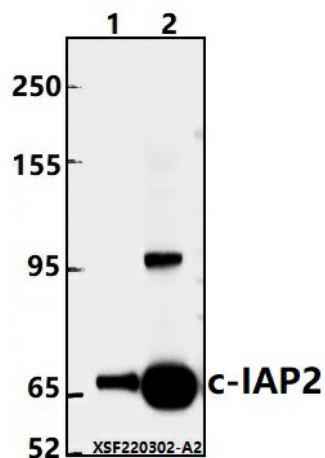


[View online »](#)

Synonyms: API2; Apoptosis inhibitor 2; Baculoviral IAP repeat-containing protein 3; BIRC3; C-IAP2; Cellular inhibitor of apoptosis 2; hIAP-1; hIAP1; IAP homolog C; Inhibitor of apoptosis protein 1; MIHC; RING-type E3 ubiquitin transferase BIRC3; RING finger protein 49; RNF49; TNFR2-TRAF-signaling complex protein 1

Note: For research use only, not for use in diagnostic procedure.

Product images:



Western blot (WB) analysis of c-IAP2 polyclonal antibody at 1:1000 dilution Lane1:The Heart tissue lysate of Rat(40ug) Lane2:The Liver tissue lysate of Mouse(40ug)