

Product datasheet for **TA392513M**

LKB1 (STK11) Rabbit Polyclonal Antibody

Product data:

Product Type:	Primary Antibodies
Applications:	WB
Recommended Dilution:	WB: 1:1000~1:2000
Reactivity:	Human, Rat, Mouse
Host:	Rabbit
Isotype:	IgG
Clonality:	Polyclonal
Immunogen:	Synthetic peptide, corresponding to Human LKB1.
Specificity:	LKB1 (Ser428) polyclonal antibody detects endogenous levels of LKB1 protein.
Formulation:	Rabbit IgG, 1mg/ml in PBS with 0.02% sodium azide, 50% glycerol, pH7.2.
Concentration:	1mg/ml
Conjugation:	Unconjugated
Storage:	Store at 4°C short term. Aliquot and store at -20°C long term. Avoid freeze-thaw cycles.
Stability:	1 year
Predicted Protein Size:	~ 54 kDa
Gene Name:	serine/threonine kinase 11
Database Link:	Entrez Gene 6794 Human Q15831

[View online »](#)

Background:

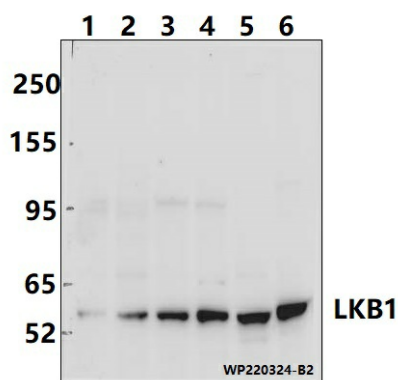
LKB1 (STK11) is a serine/threonine kinase and tumor suppressor that helps control cell structure, apoptosis and energy homeostasis through regulation of numerous downstream kinases. A cytosolic protein complex comprised of LKB1, putative kinase STRAD, and the MO25 scaffold protein, activates both AMP-activated protein kinase (AMPK) and several AMPK-related kinases. AMPK plays a predominant role as the master regulator of cellular energy homeostasis, controlling downstream effectors that regulate cell growth and apoptosis in response to cellular ATP concentrations. LKB1 appears to be phosphorylated in cells at several sites, including human LKB1 at Ser31/325/428 and Thr189/336/363. Mutation in the corresponding LKB1 gene causes Peutz-Jeghers syndrome (PJS), an autosomal dominant disorder characterized by benign GI tract polyps and dark skin lesions of the mouth, hands, and feet. A variety of other LKB1 gene mutations have been associated with the formation of sporadic cancers in several tissues.

Synonyms:

HLkb1; Liver kinase B1; LKB1; LKB1, PJS; Renal carcinoma antigen NY-REN-19; Serine/threonine-protein kinase STK11; STK11

Note:

For research use only, not for use in diagnostic procedure.

Product images:


Western blot (WB) analysis of LKB1 (Ser428) polyclonal antibody at 1:2000 dilution
 Lane1:A549 whole cell lysate(40ug) Lane2:MCF-1 whole cell lysate(40ug) Lane3:THP-1 whole cell lysate(40ug) Lane4:K562 whole cell lysate(40ug) Lane5:PC12 whole cell lysate(40ug) Lane6:BV2 whole cell lysate(40ug)