

Product datasheet for **TA392511S**

Rabbit Polyclonal Antibody

Product data:

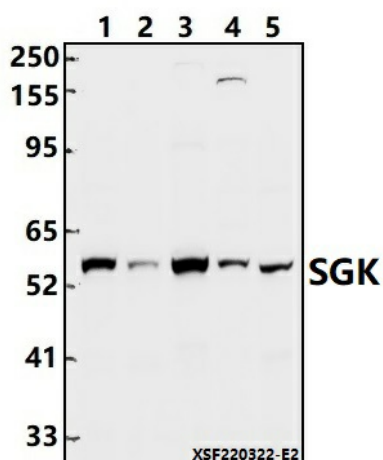
| | |
|-------------------------|--|
| Product Type: | Primary Antibodies |
| Applications: | WB |
| Recommended Dilution: | WB: 1:2000~1:5000 |
| Reactivity: | Human, Rat, Mouse |
| Host: | Rabbit |
| Isotype: | IgG |
| Clonality: | Polyclonal |
| Immunogen: | Synthetic peptide, corresponding to Human SGK. |
| Specificity: | SGK (S422) polyclonal antibody detects endogenous levels of SGK protein. |
| Formulation: | Rabbit IgG, 1mg/ml in PBS with 0.02% sodium azide, 50% glycerol, pH7.2. |
| Concentration: | 1mg/ml |
| Conjugation: | Unconjugated |
| Storage: | Store at 4°C short term. Aliquot and store at -20°C long term. Avoid freeze-thaw cycles. |
| Stability: | 1 year |
| Predicted Protein Size: | ~ 58 kDa |
| Database Link: | O00141/Q9HBY8/Q96BR1 |
| Background: | Serum and glucocorticoid-inducible kinase (SGK) is a serine/threonine kinase closely related to Akt. SGK is rapidly induced in response to a variety of stimuli, including serum, glucocorticoid, follicle stimulating hormone, osmotic shock, and mineralocorticoids. SGK activation can be accomplished via HGF PI3K-dependent pathways and by integrin-mediated PI3K-independent pathways. Induction and activation of SGK has been implicated in activating the modulation of anti-apoptotic and cell cycle regulation. SGK also plays an important role in activating certain potassium, sodium, and chloride channels, suggesting its involvement in the regulation of processes such as cell survival, neuronal excitability, and renal sodium excretion. SGK is negatively regulated by ubiquitination and proteasome degradation. |


[View online »](#)

Synonyms: CISK; Cytokine-independent survival kinase; Serine/threonine-protein kinase Sgk1; Serine/threonine-protein kinase Sgk2; Serum/glucocorticoid-regulated kinase 2; Serine/threonine-protein kinase Sgk3; Serum/glucocorticoid-regulated kinase-like; Serum/glucocorticoid-regulated kinase 1; Serum/glucocorticoid-regulated kinase 3; SGK; SGK1; SGK2; SGK3; SGKL

Note: For research use only, not for use in diagnostic procedure.

Product images:



Western blot (WB) analysis of SGK (S422) polyclonal antibody at 1:2000 dilution Lane1:HeLa whole cell lysate(40ug) Lane2:PC3 whole cell lysate(40ug) Lane3:HEK293T whole cell lysate(40ug) Lane4:BV2 whole cell lysate(40ug) Lane5:PC12 whole cell lysate(40ug)