

## Product datasheet for **TA392506M**

### SMAD2 Rabbit Polyclonal Antibody

#### Product data:

Product Type:	Primary Antibodies
Applications:	WB
Recommended Dilution:	WB: 1:1000~1:2000
Reactivity:	Human, Rat, Mouse
Host:	Rabbit
Isotype:	IgG
Clonality:	Polyclonal
Immunogen:	Synthetic peptide, corresponding to Human Smad2.
Specificity:	Smad2 (Thr220) polyclonal antibody detects endogenous levels of Smad2 protein.
Formulation:	Rabbit IgG, 1mg/ml in PBS with 0.02% sodium azide, 50% glycerol, pH7.2.
Concentration:	1mg/ml
Conjugation:	Unconjugated
Storage:	Store at 4°C short term. Aliquot and store at -20°C long term. Avoid freeze-thaw cycles.
Stability:	1 year
Predicted Protein Size:	~ 53 kDa
Gene Name:	SMAD family member 2
Database Link:	<a href="#">Entrez Gene 4087 Human Q15796</a>

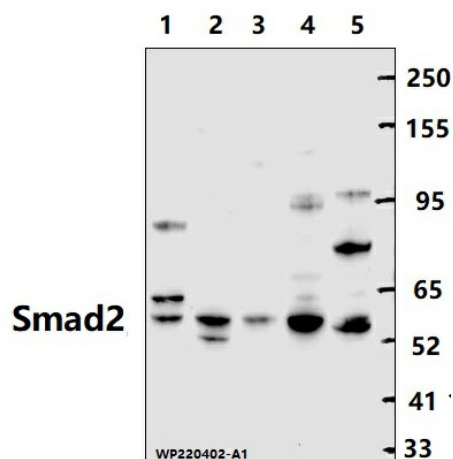
**Background:** Members of the Smad family of signal transduction molecules are components of a critical intracellular pathway that transmit TGF- $\beta$  signals from the cell surface into the nucleus. Three distinct classes of Smads have been defined: the receptor-regulated Smads (R-Smads), which include Smad1, 2, 3, 5, and 8; the common-mediator Smad (co-Smad), Smad4; and the antagonistic or inhibitory Smads (I-Smads), Smad6 and 7. Activated type I receptors associate with specific R-Smads and phosphorylate them on a conserved carboxy-terminal SSXS motif. The phosphorylated R-Smad dissociates from the receptor and forms a heteromeric complex with the co-Smad (Smad4), allowing translocation of the complex to the nucleus. Once in the nucleus, Smads can target a variety of DNA binding proteins to regulate transcriptional responses.


[View online »](#)

**Synonyms:** hMAD-2; hSMAD2; JV18-1; Mad-related protein 2; MADH2, MADR2; MAD homolog 2; Mothers against decapentaplegic homolog 2; Mothers against DPP homolog 2; SMAD 2; SMAD2; Smad2; SMAD family member 2

**Note:** For research use only, not for use in diagnostic procedure.

**Product images:**



Western blot (WB) analysis of Smad2 polyclonal antibody at 1:2000 dilution Lane1:BV2 whole cell lysate(40ug) Lane2:PC12 whole cell lysate(40ug) Lane3:Hela whole cell lysate(50ug) Lane4:A549 whole cell lysate(50ug) Lane5:Jurkat whole cell lysate(40ug)