

## Product datasheet for **TA392505M**

### **cIAP1 (BIRC2) Rabbit Polyclonal Antibody**

#### **Product data:**

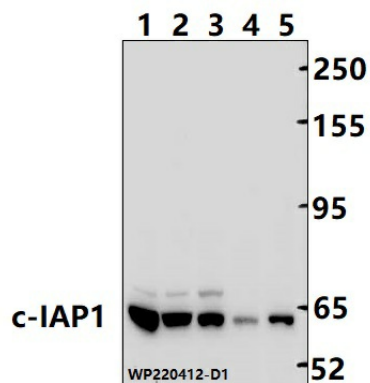
Product Type:	Primary Antibodies
Applications:	WB
Recommended Dilution:	WB: 1:2000~1:5000
Reactivity:	Human
Host:	Rabbit
Isotype:	IgG
Clonality:	Polyclonal
Immunogen:	Synthetic peptide, corresponding to Human c-IAP1.
Specificity:	c-IAP1 polyclonal antibody detects endogenous levels of c-IAP1 protein.
Formulation:	Rabbit IgG, 1mg/ml in PBS with 0.02% sodium azide, 50% glycerol, pH7.2.
Concentration:	1mg/ml
Conjugation:	Unconjugated
Storage:	Store at 4°C short term. Aliquot and store at -20°C long term. Avoid freeze-thaw cycles.
Stability:	1 year
Predicted Protein Size:	~ 62 kDa
Gene Name:	baculoviral IAP repeat containing 2
Database Link:	<a href="#">Entrez Gene 329 Human Q13490</a>
Background:	<p>The inhibitor of apoptosis protein (IAP) family consists of an evolutionarily conserved group of apoptosis inhibitors containing a conserved 70 amino acid BIR (baculovirus inhibitor repeat) domain. Human members of this family include c-IAP1, c-IAP2, XIAP, survivin, livin, and NAIP. Overexpression of IAP family members, particularly survivin and livin, in cancer cell lines and primary tumors suggests an important role for these proteins in cancer progression. In general, the IAP proteins function through direct interactions to inhibit the activity of several caspases, including caspase-3, caspase-7, and caspase-9. In addition, binding of IAP family members to the mitochondrial protein Smac blocks their interaction with caspase-9, thereby allowing the processing and activation of the caspase.</p>

[View online »](#)

**Synonyms:** Baculoviral IAP repeat-containing protein 2; C-IAP1; Cellular inhibitor of apoptosis; hIAP-2; Hiap2; RING-type E3 ubiquitin transferase BIRC2; RING finger protein 48; TNFR2-TRAF-signaling complex protein 2

**Note:** For research use only, not for use in diagnostic procedure.

**Product images:**



Western blot (WB) analysis of TGFβ c-IAP1 polyclonal antibody at 1:2000 dilution  
 Lane1:HCT116 whole cell lysate(40ug) Lane2:K562 whole cell lysate(40ug) Lane3:HepG2 whole cell lysate(40ug) Lane4:PC3 whole cell lysate(40ug) Lane5:A549 whole cell lysate(40ug)