

Product datasheet for **TA392504S**

TGF beta Receptor II (TGFB2) Rabbit Polyclonal Antibody

Product data:

Product Type:	Primary Antibodies
Applications:	WB
Recommended Dilution:	WB: 1:1000~1:2000
Reactivity:	Human, Rat, Mouse
Host:	Rabbit
Isotype:	IgG
Clonality:	Polyclonal
Immunogen:	Synthetic peptide, corresponding to Human TGFβ RII.
Specificity:	TGFβ RII (E246) polyclonal antibody detects endogenous levels of TGFβ RII protein.
Formulation:	Rabbit IgG, 1mg/ml in PBS with 0.02% sodium azide, 50% glycerol, pH7.2.
Concentration:	1mg/ml
Conjugation:	Unconjugated
Storage:	Store at 4°C short term. Aliquot and store at -20°C long term. Avoid freeze-thaw cycles.
Stability:	1 year
Predicted Protein Size:	~ 65 kDa
Gene Name:	transforming growth factor beta receptor 2
Database Link:	Entrez Gene 7048 Human P37173



[View online »](#)

Background:

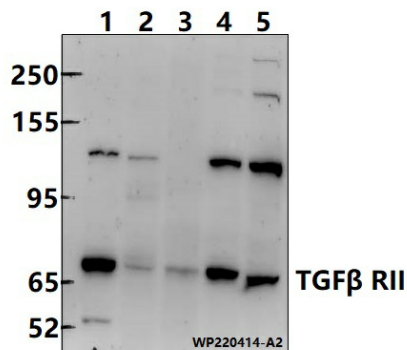
Transforming growth factor- β (TGF- β) superfamily members are critical regulators of cell proliferation and differentiation, developmental patterning and morphogenesis, and disease pathogenesis. TGF- β elicits signaling through three cell surface receptors: type I (RI), type II (RII), and type III (RIII). Type I and type II receptors are serine/threonine kinases that form a heteromeric complex. In response to ligand binding, the type II receptors form a stable complex with the type I receptors allowing phosphorylation and activation of type I receptor kinases. The type III receptor, also known as betaglycan, is a transmembrane proteoglycan with a large extracellular domain that binds TGF- β with high affinity but lacks a cytoplasmic signaling domain. Expression of the type III receptor can regulate TGF- β signaling through presentation of the ligand to the signaling complex. The only known direct TGF- β signaling effectors are the Smad family proteins, which transduce signals from the cell surface directly to the nucleus to regulate target gene transcription.

Synonyms:

TbetaR-II; TGF-beta receptor type-2; TGF-beta receptor type II; TGF-beta type II receptor; TGFR-2; Transforming growth factor-beta receptor type II

Note:

For research use only, not for use in diagnostic procedure.

Product images:


Western blot (WB) analysis of TGF β RII (Ser428) polyclonal antibody at 1:1000 dilution Lane1:BV2 whole cell lysate(40ug) Lane2:PC12 whole cell lysate(50ug) Lane3:PC3 whole cell lysate(60ug) Lane4:HEPG2 whole cell lysate(50ug) Lane5:A549 whole cell lysate(60ug)