

## Product datasheet for **TA392500M**

### ROR gamma (RORC) Rabbit Polyclonal Antibody

#### Product data:

Product Type:	Primary Antibodies
Applications:	IHC, WB
Recommended Dilution:	WB: 1:1000~1:2000 IHC: 1:50~1:200
Reactivity:	Human
Host:	Rabbit
Isotype:	IgG
Clonality:	Polyclonal
Immunogen:	Synthetic peptide, corresponding to Human RORγ.
Specificity:	RORγ polyclonal antibody detects endogenous levels of RORγ protein.
Formulation:	Rabbit IgG, 1mg/ml in PBS with 0.02% sodium azide, 50% glycerol, pH7.2
Concentration:	1mg/ml
Conjugation:	Unconjugated
Storage:	Store at 4°C short term. Aliquot and store at -20°C long term. Avoid freeze-thaw cycles.
Stability:	1 year
Predicted Protein Size:	~ 60 kDa
Gene Name:	RAR related orphan receptor C
Database Link:	<a href="#">Entrez Gene 6097 Human P51449</a>

[View online »](#)

**Background:**

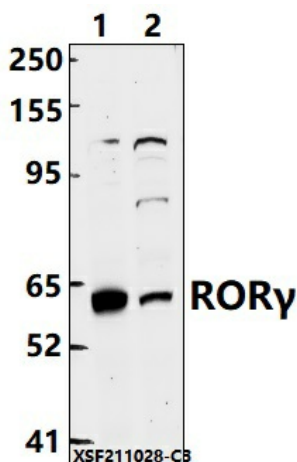
The nuclear orphan receptors ROR $\alpha$  and ROR $\gamma$  are members of the nuclear hormone receptor superfamily. Members of this family acts by directly associating with DNA sequences known as hormone response elements (HREs) and typically bind DNA as either homo- or heterodimers. ROR $\alpha$  and ROR $\gamma$  are unique in that they bind DNA as monomers. ROR $\alpha$  has multiple isoforms that share common DNA and putative ligand-binding domains, but differ in their amino terminal domains, which are generated by alternative RNA processing. ROR $\gamma$  comprises a 560 amino acid protein that shares 50% amino acid identity with ROR $\alpha$  and is most highly expressed in skeletal muscle. Although these proteins are considered "orphan receptors," due to a lack of defined ligands, experimental evidence has shown that melatonin may be the natural ligand for these nuclear receptors. The gene encoding ROR $\alpha$  maps to chromosome 15q22.2 and the gene encoding ROR $\gamma$  maps to chromosome 1q21.3.

**Synonyms:**

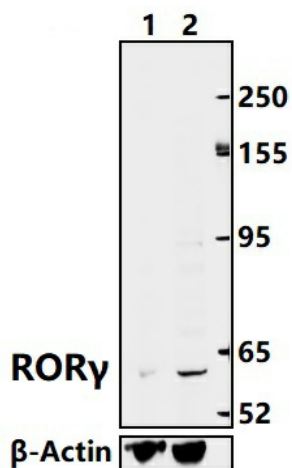
NR1F3; Nuclear receptor ROR-gamma; Nuclear receptor RZR-gamma; Nuclear receptor subfamily 1 group F member 3; RAR-related orphan receptor C; Retinoid-related orphan receptor-gamma; RORC; ROR $\gamma$ ; RZRG

**Note:**

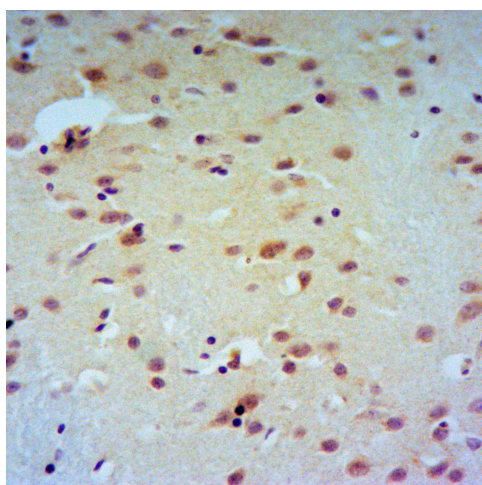
For research use only, not for use in diagnostic procedure.

**Product images:**


Western blot (WB) analysis of ROR $\gamma$  polyclonal antibody at 1:1000 dilution Lane1:HepG2 whole cell lysate(40ug) Lane2:HEK293T whole cell lysate(40ug)



Western blot (WB) analysis of ROR $\gamma$  polyclonal antibody at 1:1000 dilution. Lane 1: ROR $\gamma$  knockdown A549 whole cell lysate (40ug). Lane 2: A549 whole cell lysate (40ug).



Immunohistochemistry of paraffin-embedded Human Brain using ROR $\gamma$  antibody at dilution of 1:50.