

Product datasheet for **TA392499M**

ATG9B Rabbit Polyclonal Antibody

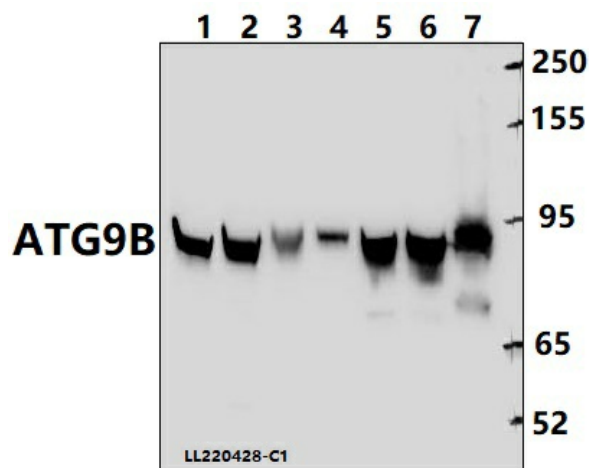
Product data:

| | |
|-------------------------|--|
| Product Type: | Primary Antibodies |
| Applications: | WB |
| Recommended Dilution: | WB: 1:5000~1:10000 IP: 1:50~1:200 |
| Reactivity: | Human, Rat, Mouse |
| Host: | Rabbit |
| Isotype: | IgG |
| Clonality: | Polyclonal |
| Immunogen: | Synthetic peptide, corresponding to Human ATG9B. |
| Specificity: | ATG9B (G883) polyclonal antibody detects endogenous levels of ATG9B protein. |
| Formulation: | Rabbit IgG, 1mg/ml in PBS with 0.02% sodium azide, 50% glycerol, pH7.2. |
| Concentration: | 1mg/ml |
| Conjugation: | Unconjugated |
| Storage: | Store at 4°C short term. Aliquot and store at -20°C long term. Avoid freeze-thaw cycles. |
| Stability: | 1 year |
| Predicted Protein Size: | ~ 95 kDa |
| Gene Name: | autophagy related 9B |
| Database Link: | Entrez Gene 285973 Human Q674R7 |
| Background: | Phospholipid scramblase involved in autophagy by mediating autophagosomal membrane expansion. Cycles between the preautophagosomal structure/phagophore assembly site (PAS) and the cytoplasmic vesicle pool and supplies membrane for the growing autophagosome. Lipid scramblase activity plays a key role in preautophagosomal structure/phagophore assembly by distributing the phospholipids that arrive through ATG2 (ATG2A or ATG2B) from the cytoplasmic to the luminal leaflet of the bilayer, thereby driving autophagosomal membrane expansion. In addition to autophagy, also plays a role in necrotic cell death. |
| Synonyms: | APG9-like 2; APG9L2; ATG9B; Autophagy-related protein 9B; Nitric oxide synthase 3-overlapping antisense gene protein; Protein sONE |

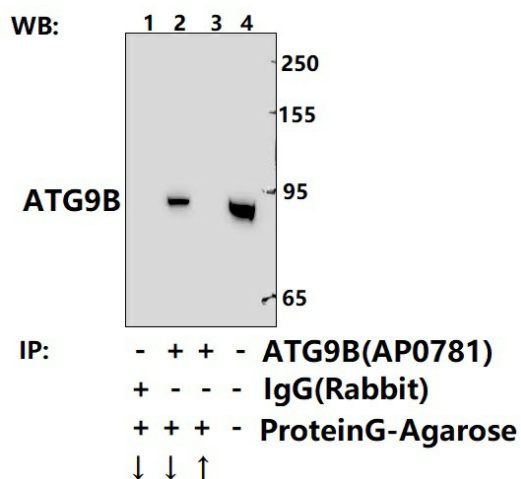

[View online »](#)

Note: For research use only, not for use in diagnostic procedure.

Product images:



Western blot (WB) analysis of ATG9B (G883) polyclonal antibody at 1:5000 dilution Lane1:C6 whole cell lysate(40ug) Lane2:BV2 whole cell lysate(40ug) Lane3:The Brain tissue lysate of Rat(40ug) Lane4:The Brain tissue lysate of Mouse(40ug) Lane5:MCF-7 whole cell lysate(40ug) Lane6:HepG2 whole cell lysate(40ug) Lane7:Jurkat whole cell lysate(40ug)



Immunoprecipitation of HEK293T cell lysates using ATG9B (G883) pAb (Sepharose Bead Conjugate)#BD0048 (lane 2 and lane 3) and Nonspecific IgG Control (Sepharose Bead Conjugate)#BD0048 (lane 1) .Lane 4 is 30% input. The western blot was probed using ATG9B (G883) pAb #[TA392499].