

## Product datasheet for **TA392498S**

### Caspase 9 (CASP9) Rabbit Polyclonal Antibody

#### Product data:

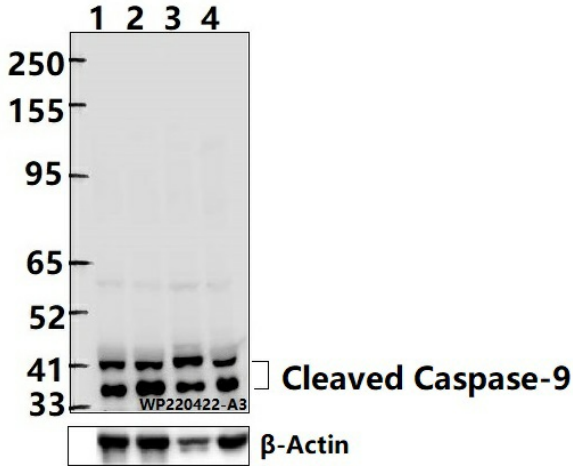
Product Type:	Primary Antibodies
Applications:	WB
Recommended Dilution:	WB: 1:1000~1:2000 IP: 1:50~1:200
Reactivity:	Human
Host:	Rabbit
Isotype:	IgG
Clonality:	Polyclonal
Immunogen:	Synthetic peptide, corresponding to Human Caspase-9.
Specificity:	Caspase-9 (T125) polyclonal antibody detects endogenous levels of Caspase-9 protein.
Formulation:	Rabbit IgG, 1mg/ml in PBS with 0.02% sodium azide, 50% glycerol, pH7.2.
Concentration:	1mg/ml
Conjugation:	Unconjugated
Storage:	Store at 4°C short term. Aliquot and store at -20°C long term. Avoid freeze-thaw cycles.
Stability:	1 year
Predicted Protein Size:	~ 37, 40/40, 46 kDa
Gene Name:	caspase 9
Database Link:	<a href="#">Entrez Gene 842 Human P55211</a>
Background:	Caspase-9 (ICE-LAP6, Mch6) is an important member of the cysteine aspartic acid protease (caspase) family. Upon apoptotic stimulation, cytochrome c released from mitochondria associates with the 47 kDa procaspase-9/Apaf-1. Apaf-1 mediated activation of caspase-9 involves intrinsic proteolytic processing resulting in cleavage at Asp315 and producing a p35 subunit. Another cleavage occurs at Asp330 producing a p37 subunit that can serve to amplify the apoptotic response. Cleaved caspase-9 further processes other caspase members, including caspase-3 and caspase-7, to initiate a caspase cascade, which leads to apoptosis.
Synonyms:	APAF-3; Apoptotic protease-activating factor 3; Apoptotic protease Mch-6; CASP-9; Caspase-9 subunit p10; Caspase-9 subunit p35; ICE-LAP6; ICE-like apoptotic protease 6



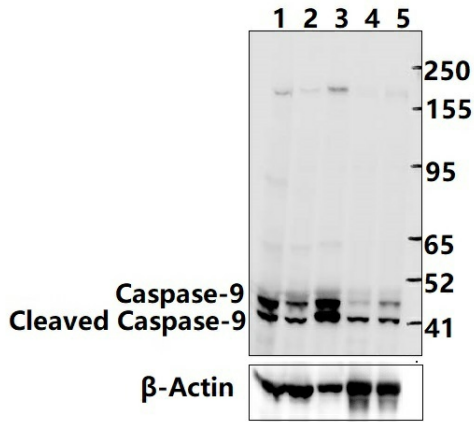
[View online »](#)

Note: For research use only, not for use in diagnostic procedure.

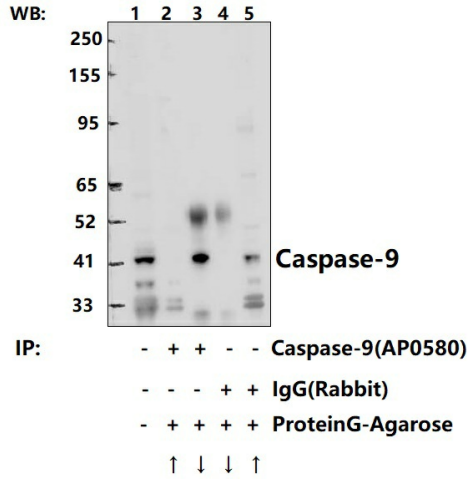
Product images:



Western blot (WB) analysis of Caspase-9 (T125) polyclonal antibody at 1:1000 dilution  
 Lane1:Jurkat whole cell lysate(40ug) Lane2:Jurkat treated with etoposide(25µM,5 hours) whole cell lysate(40ug) Lane3:K562 whole cell lysate(40ug) Lane4:Jurkat whole cell lysate(40ug)



Western blot (WB) analysis of Caspase-9 (T125) polyclonal antibody at 1:5000 dilution  
 Lane1:A549 whole cell lysate(40ug) Lane2:Jurkat whole cell lysate(40ug) Lane3:K562 whole cell lysate(40ug) Lane4:Jurkat treated with etoposide(25µM,5 hours) whole cell lysate(40ug) Lane5:Jurkat whole cell lysate(40ug)



Immunoprecipitation of K562 cell lysates using Caspase-9 (T125) pAb (Sepharose Bead Conjugate)#BD0048 (lane 2 and lane 3) and Nonspecific IgG Control (Sepharose Bead Conjugate)#BD0048 (lane 4 and lane 5). Lane 1 is 30% input. The western blot was probed using Caspase-9 (T125) pAb #[TA392498].