

Product datasheet for **TA392498M**

Caspase 9 (CASP9) Rabbit Polyclonal Antibody

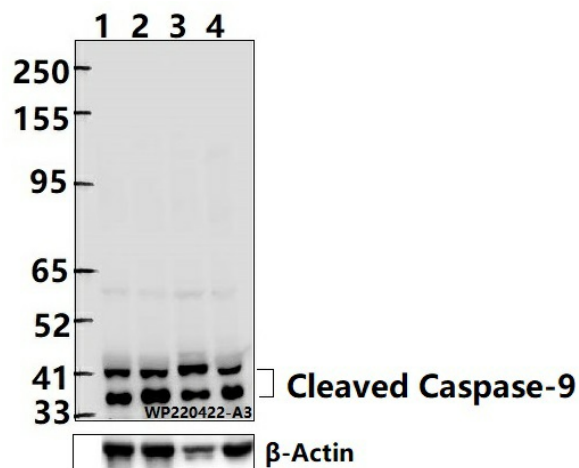
Product data:

| | |
|-------------------------|--|
| Product Type: | Primary Antibodies |
| Applications: | WB |
| Recommended Dilution: | WB: 1:1000~1:2000 IP: 1:50~1:200 |
| Reactivity: | Human |
| Host: | Rabbit |
| Isotype: | IgG |
| Clonality: | Polyclonal |
| Immunogen: | Synthetic peptide, corresponding to Human Caspase-9. |
| Specificity: | Caspase-9 (T125) polyclonal antibody detects endogenous levels of Caspase-9 protein. |
| Formulation: | Rabbit IgG, 1mg/ml in PBS with 0.02% sodium azide, 50% glycerol, pH7.2. |
| Concentration: | 1mg/ml |
| Conjugation: | Unconjugated |
| Storage: | Store at 4°C short term. Aliquot and store at -20°C long term. Avoid freeze-thaw cycles. |
| Stability: | 1 year |
| Predicted Protein Size: | ~ 37, 40/40, 46 kDa |
| Gene Name: | caspase 9 |
| Database Link: | Entrez Gene 842 Human P55211 |
| Background: | Caspase-9 (ICE-LAP6, Mch6) is an important member of the cysteine aspartic acid protease (caspase) family. Upon apoptotic stimulation, cytochrome c released from mitochondria associates with the 47 kDa procaspase-9/Apaf-1. Apaf-1 mediated activation of caspase-9 involves intrinsic proteolytic processing resulting in cleavage at Asp315 and producing a p35 subunit. Another cleavage occurs at Asp330 producing a p37 subunit that can serve to amplify the apoptotic response. Cleaved caspase-9 further processes other caspase members, including caspase-3 and caspase-7, to initiate a caspase cascade, which leads to apoptosis. |
| Synonyms: | APAF-3; Apoptotic protease-activating factor 3; Apoptotic protease Mch-6; CASP-9; Caspase-9 subunit p10; Caspase-9 subunit p35; ICE-LAP6; ICE-like apoptotic protease 6 |

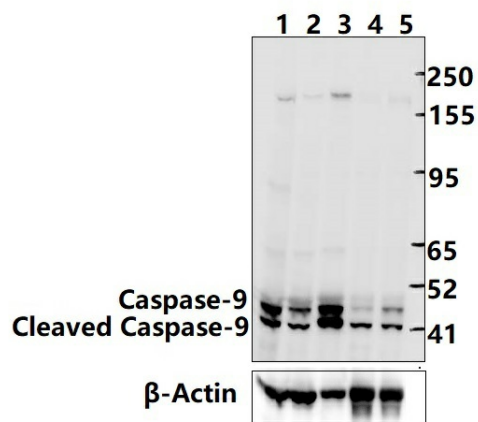

[View online »](#)

Note: For research use only, not for use in diagnostic procedure.

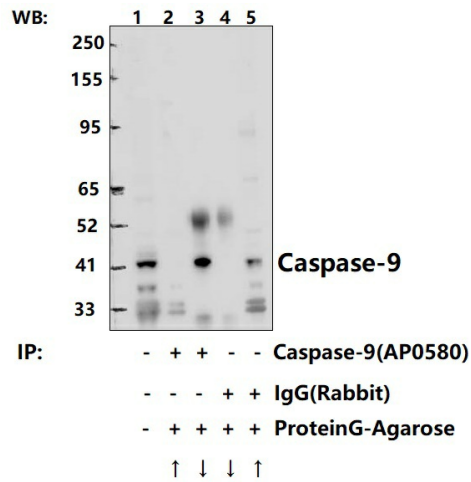
Product images:



Western blot (WB) analysis of Caspase-9 (T125) polyclonal antibody at 1:1000 dilution
Lane1:Jurkat whole cell lysate(40ug) Lane2:Jurkat treated with etoposide(25μM,5 hours) whole cell lysate(40ug) Lane3:K562 whole cell lysate(40ug) Lane4:Jurkat whole cell lysate(40ug)



Western blot (WB) analysis of Caspase-9 (T125) polyclonal antibody at 1:5000 dilution
Lane1:A549 whole cell lysate(40ug) Lane2:Jurkat whole cell lysate(40ug) Lane3:K562 whole cell lysate(40ug) Lane4:Jurkat treated with etoposide(25μM,5 hours) whole cell lysate(40ug) Lane5:Jurkat whole cell lysate(40ug)



Immunoprecipitation of K562 cell lysates using Caspase-9 (T125) pAb (Sepharose Bead Conjugate)#BD0048 (lane 2 and lane 3) and Nonspecific IgG Control (Sepharose Bead Conjugate)#BD0048 (lane 4 and lane 5). Lane 1 is 30% input. The western blot was probed using Caspase-9 (T125) pAb #[TA392498].