

## Product datasheet for **TA392497S**

### NR2F2 Rabbit Polyclonal Antibody

#### Product data:

Product Type:	Primary Antibodies
Applications:	IHC, WB
Recommended Dilution:	WB: 1:1000~1:2000 IHC: 1:50~1:200
Reactivity:	Human
Host:	Rabbit
Isotype:	IgG
Clonality:	Polyclonal
Immunogen:	Synthetic peptide, corresponding to Human COUP-TF II.
Specificity:	COUP-TF II polyclonal antibody detects endogenous levels of COUP-TF II protein.
Formulation:	Rabbit IgG, 1mg/ml in PBS with 0.02% sodium azide, 50% glycerol, pH7.4.
Concentration:	1mg/ml
Conjugation:	Unconjugated
Storage:	Store at 4°C short term. Aliquot and store at -20°C long term. Avoid freeze-thaw cycles.
Stability:	1 year
Predicted Protein Size:	~ 47 kDa
Gene Name:	nuclear receptor subfamily 2 group F member 2
Database Link:	<a href="#">Entrez Gene 7026 Human P24468</a>

**Background:** Chicken ovalbumin upstream promoter transcription factor (COUP-TF) belongs to the NR2 subfamily of the nuclear hormone receptor family. COUP-TFI and COUP-TFII are two of the well-characterized members in the NR2 subfamily. These two members are highly conserved in their two zinc-finger DNA binding domains (DBD) and the ligand binding domain (LBD), and function as repressors or activators of downstream target genes to regulate different biological processes. COUP-TFI and II bind to 5'-AGGTCA-3' motif palindromes, either directly or indirectly, through heterodimer formation with other proteins (e.g. RXRs) to regulate downstream target gene expression. COUP-TFI is involved in neuronal development, tissue patterning, and differentiation. COUP-TFII has been shown to be involved in angiogenesis, glucose homeostasis, and mesenchymal cell commitment.

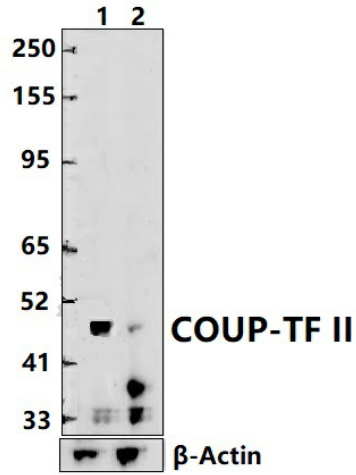


[View online »](#)

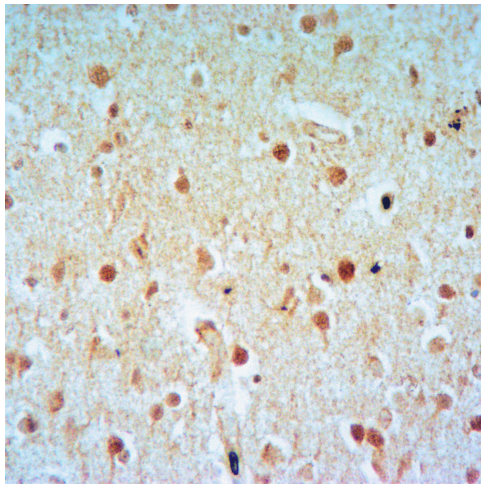
**Synonyms:** Apolipoprotein A-I regulatory protein 1; ARP-1; ARP1; COUP-TF2; COUP-TF II; COUP transcription factor 2; COUP transcription factor II; NR2F2; Nuclear receptor subfamily 2 group F member 2; TFCOUP2

**Note:** For research use only, not for use in diagnostic procedure.

**Product images:**



Western blot (WB) analysis of COUP-TF II polyclonal antibody at 1:1000 dilution  
Lane1:A549 whole cell lysate(40ug) Lane2:COUP-TF II knockdown A549 whole cell lysate(40ug)



Immunohistochemistry of paraffin-embedded Rat Brain using COUP-TF II antibody at dilution of 1:50.