

## Product datasheet for **TA392494S**

### EIF4EBP1 Rabbit Polyclonal Antibody

#### Product data:

|                         |  |
|-------------------------|--|
| Product Type:           | Primary Antibodies   |
| Applications:           | WB   |
| Recommended Dilution:   | WB: 1:1000~1:2000  |
| Reactivity:             | Human  |
| Host:                   | Rabbit   |
| Isotype:                | IgG  |
| Clonality:              | Polyclonal   |
| Immunogen:              | Synthetic phosphopeptide derived from human 4E-BP1 around the phosphorylation site of Threonine 70.                      |
| Specificity:            | 4E-BP1(Phospho-Thr70) polyclonal antibody detects endogenous levels of 4E-BP1 protein only when phosphorylated at Thr70. |
| Formulation:            | Rabbit IgG, 1mg/ml in PBS with 0.02% sodium azide, 50% glycerol, pH7.2.  |
| Concentration:          | 1mg/ml   |
| Conjugation:            | Unconjugated   |
| Storage:                | Store at 4°C short term. Aliquot and store at -20°C long term. Avoid freeze-thaw cycles.                                 |
| Stability:              | 1 year   |
| Predicted Protein Size: | ~ 18 kDa   |
| Gene Name:              | eukaryotic translation initiation factor 4E binding protein 1  |
| Database Link:          | <a href="#">Entrez Gene 1978 Human Q13541</a>  |

**Background:** Translation repressor protein 4E-BP1 (also known as PHAS-1) inhibits cap-dependent translation by binding to the translation initiation factor eIF4E. Hyperphosphorylation of 4E-BP1 disrupts this interaction and results in activation of cap-dependent translation. Both the PI3 kinase/Akt pathway and FRAP/mTOR kinase regulate 4E-BP1 activity. Multiple 4E-BP1 residues are phosphorylated in vivo. While phosphorylation by FRAP/mTOR at Thr37 and Thr46 does not prevent the binding of 4E-BP1 to eIF4E, it is thought to prime 4E-BP1 for subsequent phosphorylation at Ser65 and Thr70.

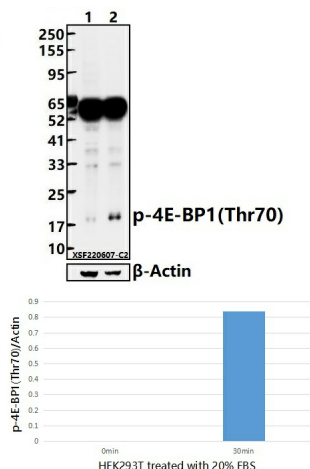


[View online »](#)

**Synonyms:** 4E-BP1; eIF4E-binding protein 1; EIF4EBP1; Eukaryotic translation initiation factor 4E-binding protein 1; PHAS-I; Phosphorylated heat- and acid-stable protein regulated by insulin 1

**Note:** For research use only, not for use in diagnostic procedure.

**Product images:**



Western blot (WB) analysis of 4E-BP1(Phospho-Thr70) polyclonal antibody at 1:1000 dilution  
 Lane1:HEK293T whole cell lysate(40ug)  
 Lane2:HEK293T treated with 20% FBS for 30min whole cell lysate(40ug)