

Product datasheet for **TA392491M**

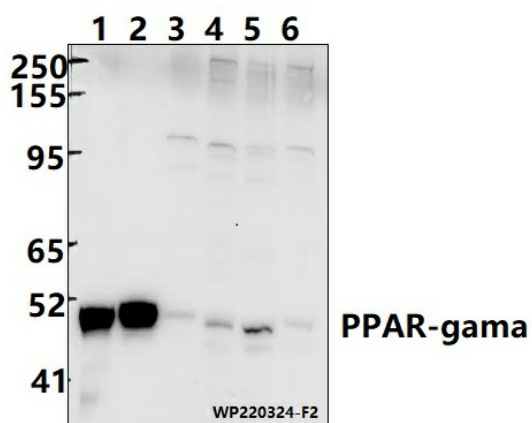
PPAR gamma (PPARG) Rabbit Polyclonal Antibody

Product data:

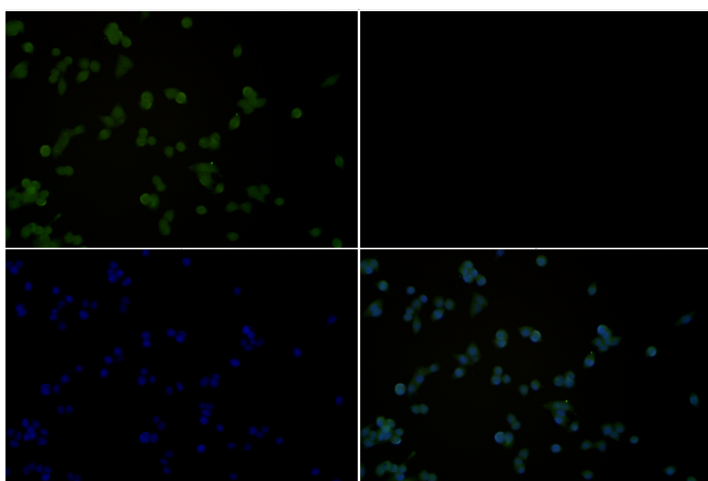
| | |
|-------------------------|---|
| Product Type: | Primary Antibodies |
| Applications: | IF, WB |
| Recommended Dilution: | WB: 1:1000~1:2000 IF: 1:50~1:200 |
| Reactivity: | Human, Rat, Mouse |
| Host: | Rabbit |
| Isotype: | IgG |
| Clonality: | Polyclonal |
| Immunogen: | Synthetic peptide, corresponding to Human PPAR-gama. |
| Specificity: | PPAR-gama polyclonal antibody detects endogenous levels of PPAR-gama protein. |
| Formulation: | Rabbit IgG, 1mg/ml in PBS with 0.02% sodium azide, 50% glycerol, pH7.2. |
| Concentration: | 1mg/ml |
| Conjugation: | Unconjugated |
| Storage: | Store at 4°C short term. Aliquot and store at -20°C long term. Avoid freeze-thaw cycles. |
| Stability: | 1 year |
| Predicted Protein Size: | ~ 50 kDa |
| Gene Name: | peroxisome proliferator activated receptor gamma |
| Database Link: | Entrez Gene 5468 Human P37231 |
| Background: | Peroxisome proliferator-activated receptor γ (PPAR γ) is a member of the ligand-activated nuclear receptor superfamily and functions as a transcriptional activator. PPAR γ is preferentially expressed in adipocytes as well as in vascular smooth muscle cells and macrophage. Besides its role in mediating adipogenesis and lipid metabolism, PPAR γ also modulates insulin sensitivity, cell proliferation and inflammation. PPAR γ transcriptional activity is inhibited by MAP kinase phosphorylation of PPAR γ at Ser84. |
| Synonyms: | Nuclear receptor subfamily 1 group C member 3; Peroxisome proliferator-activated receptor gamma; PPAR-gamma |
| Note: | For research use only, not for use in diagnostic procedure. |

[View online »](#)

Product images:



Western blot (WB) analysis of PPAR-gama polyclonal antibody at 1:1000 dilution Lane1:The Liver tissue lysate of Mouse(30ug) Lane2:The Kidney tissue lysate of Rat(30ug) Lane3:THP-1 whole cell lysate(30ug) Lane4:MCF-7 whole cell lysate(30ug) Lane5:PC12 whole cell lysate(30ug) Lane6:CT26 whole cell lysate(30ug)



Immunofluorescence analysis of MCF-7 cells using PPAR-gama antibody at dilution of 1:50.