

Product datasheet for **TA392487S**

PGC1 alpha (PPARGC1A) Rabbit Polyclonal Antibody

Product data:

Product Type:	Primary Antibodies
Applications:	WB
Recommended Dilution:	WB: 1:1000~1:2000
Reactivity:	Human, Rat, Mouse
Host:	Rabbit
Isotype:	IgG
Clonality:	Polyclonal
Immunogen:	Synthetic peptide, corresponding to Human PRGC1.
Specificity:	PRGC1 (T56) polyclonal antibody detects endogenous levels of PRGC1 protein.
Formulation:	Rabbit IgG, 1mg/ml in PBS with 0.02% sodium azide, 50% glycerol, pH7.2.
Concentration:	1mg/ml
Conjugation:	Unconjugated
Storage:	Store at 4°C short term. Aliquot and store at -20°C long term. Avoid freeze-thaw cycles.
Stability:	1 year
Predicted Protein Size:	~ 95 kDa
Gene Name:	PPARG coactivator 1 alpha
Database Link:	Entrez Gene 10891 Human Q9UBK2
Background:	PPAR γ coactivator-1 α (PGC-1 α) was originally identified as a transcriptional coactivator whose expression closely correlated with adaptive thermogenesis following exposure to cold temperatures. Named for its association with the nuclear receptor peroxisome-proliferator activated receptor (PPAR γ), PGC-1 α interacts with a diverse array of transcription factors to regulate numerous aspects of cell physiology. PGC-1 α helps to regulate cell processes important in adaptive thermogenesis and energy metabolism, including the related functions of glucose uptake, gluconeogenesis, insulin secretion, and mitochondrial biogenesis. Long thought to be a potential therapeutic target for the treatment of type II diabetes, obesity, cardiomyopathy, or other metabolic disorders (reviewed in 4), a recent functional survey found no obvious differences in PPAR γ activity associated with recognized PGC-1 α variants.

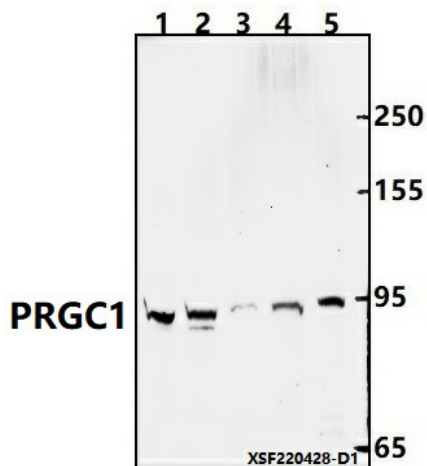


[View online »](#)

Synonyms: LEM6; Ligand effect modulator 6; Peroxisome proliferator-activated receptor gamma coactivator 1-alpha; PGC-1-alpha; PGC1; PGC1A; PPAR-gamma coactivator 1-alpha; PPARGC-1-alpha; PPARGC1; PPARGC1A

Note: For research use only, not for use in diagnostic procedure.

Product images:



Western blot (WB) analysis of PRGC1 (T56) polyclonal antibody at 1:1000 dilution
 Lane1:PC12 whole cell lysate(40ug) Lane2:BV2 whole cell lysate(40ug) Lane3:THP-1 whole cell lysate(40ug) Lane4:Hela whole cell lysate(40ug) Lane5:HepG2 whole cell lysate(20ug)