

Product datasheet for TA392487M

PGC1 alpha (PPARGC1A) Rabbit Polyclonal Antibody

Product data:

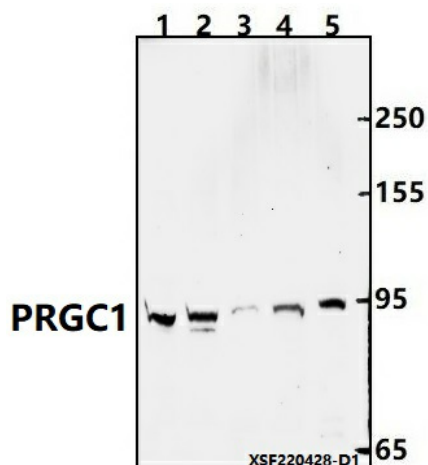
| | |
|-------------------------|---|
| Product Type: | Primary Antibodies |
| Applications: | WB |
| Recommended Dilution: | WB: 1:1000~1:2000 |
| Reactivity: | Human, Rat, Mouse |
| Host: | Rabbit |
| Isotype: | IgG |
| Clonality: | Polyclonal |
| Immunogen: | Synthetic peptide, corresponding to Human PRGC1. |
| Specificity: | PRGC1 (T56) polyclonal antibody detects endogenous levels of PRGC1 protein. |
| Formulation: | Rabbit IgG, 1mg/ml in PBS with 0.02% sodium azide, 50% glycerol, pH7.2. |
| Concentration: | 1mg/ml |
| Conjugation: | Unconjugated |
| Storage: | Store at 4°C short term. Aliquot and store at -20°C long term. Avoid freeze-thaw cycles. |
| Stability: | 1 year |
| Predicted Protein Size: | ~ 95 kDa |
| Gene Name: | PPARG coactivator 1 alpha |
| Database Link: | Entrez Gene 10891 Human Q9UBK2 |
| Background: | PPAR γ coactivator-1 α (PGC-1 α) was originally identified as a transcriptional coactivator whose expression closely correlated with adaptive thermogenesis following exposure to cold temperatures. Named for its association with the nuclear receptor peroxisome-proliferator activated receptor (PPAR γ), PGC-1 α interacts with a diverse array of transcription factors to regulate numerous aspects of cell physiology. PGC-1 α helps to regulate cell processes important in adaptive thermogenesis and energy metabolism, including the related functions of glucose uptake, gluconeogenesis, insulin secretion, and mitochondrial biogenesis. Long thought to be a potential therapeutic target for the treatment of type II diabetes, obesity, cardiomyopathy, or other metabolic disorders (reviewed in 4), a recent functional survey found no obvious differences in PPAR γ activity associated with recognized PGC-1 α variants. |


[View online »](#)

Synonyms: LEM6; Ligand effect modulator 6; Peroxisome proliferator-activated receptor gamma coactivator 1-alpha; PGC-1-alpha; PGC1; PGC1A; PPAR-gamma coactivator 1-alpha; PPARGC-1-alpha; PPARGC1; PPARGC1A

Note: For research use only, not for use in diagnostic procedure.

Product images:



Western blot (WB) analysis of PRGC1 (T56) polyclonal antibody at 1:1000 dilution
 Lane1:PC12 whole cell lysate(40ug) Lane2:BV2 whole cell lysate(40ug) Lane3:THP-1 whole cell lysate(40ug) Lane4:Hela whole cell lysate(40ug) Lane5:HepG2 whole cell lysate(20ug)