

Product datasheet for **TA392486**

TEC Rabbit Polyclonal Antibody

Product data:

Product Type:	Primary Antibodies
Applications:	IF, WB
Recommended Dilution:	WB: 1:1000~1:2000 IF: 1:50~1:200
Reactivity:	Human, Rat, Mouse
Host:	Rabbit
Isotype:	IgG
Clonality:	Polyclonal
Immunogen:	Synthetic peptide, corresponding to Human TEC.
Specificity:	TEC (Q75) polyclonal antibody detects endogenous levels of TEC protein.
Formulation:	Rabbit IgG, 1mg/ml in PBS with 0.02% sodium azide, 50% glycerol, pH7.2.
Concentration:	1mg/ml
Conjugation:	Unconjugated
Storage:	Store at 4°C short term. Aliquot and store at -20°C long term. Avoid freeze-thaw cycles.
Stability:	1 year
Predicted Protein Size:	~ 70 kDa
Gene Name:	tec protein tyrosine kinase
Database Link:	Entrez Gene 7006 Human P42680



[View online »](#)

Background:

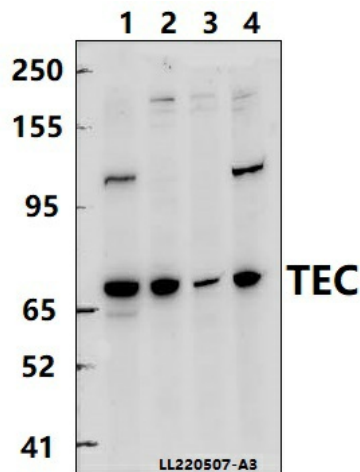
Tec kinase belongs to a structurally related subfamily of protein tyrosine kinases (PTKs) that includes Btk, Itk (also known as Emt or Tsk), Bmx, and Txk (or Rlk). With the exception of Txk, the members of this subfamily possess a long amino-terminal region consisting of a pleckstrin homology (PH) domain and a Tec homology (TH) domain. Because PH domains bind phosphoinositides with high affinity, the Tec family kinases have been proposed to act downstream of phosphatidylinositol 3-kinase (PI3-kinase) in signaling pathways. Binding of the PH domain with phosphoinositides is probably required for targeting of Tec family kinases to the cell membrane. Tec kinase is activated in response to many upstream signaling events including antigen receptor, RTK, GPCR, and integrin stimulation. Activated Tec kinase directly phosphorylates substrates such as PLC-gamma 2 and BRDG1 docking protein and mediates downstream signaling.

Synonyms:

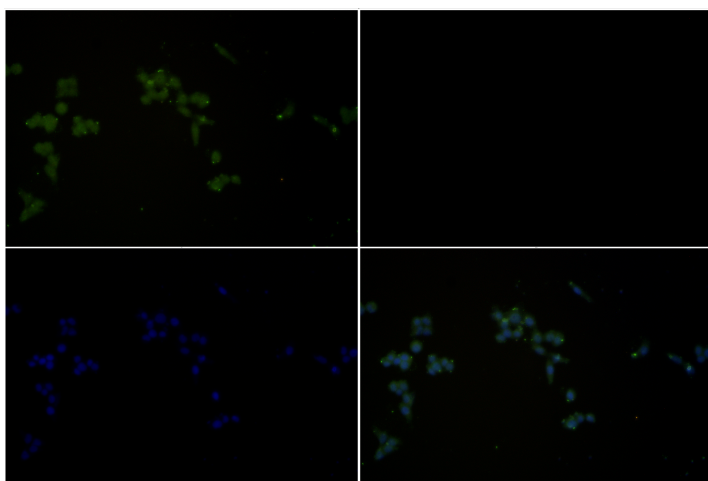
PSCTK4; TEC; Tyrosine-protein kinase Tec

Note:

For research use only, not for use in diagnostic procedure.

Product images:

Western blot (WB) analysis of TEC (Q75) polyclonal antibody at 1:2000 dilution Lane1:HeLa whole cell lysate(40ug) Lane2:MCF-7 whole cell lysate(40ug) Lane3:CT-26 whole cell lysate(40ug) Lane4:PC12 whole cell lysate(40ug)



Immunofluorescence analysis of MCF-7 cells using TEC (Q75) antibody at dilution of 1:50.