

Product datasheet for **TA392485**

NFkB p100 / p52 (NFKB2) Rabbit Polyclonal Antibody

Product data:

Product Type:	Primary Antibodies
Applications:	IF, WB
Recommended Dilution:	WB: 1:1000~1:2000 IF: 1:50~1:200
Reactivity:	Human, Rat, Mouse
Host:	Rabbit
Isotype:	IgG
Clonality:	Polyclonal
Immunogen:	Synthetic peptide, corresponding to Human NF-Kb p100
Specificity:	NF-κB p100 polyclonal antibody detects endogenous levels of NF-κB p100 protein.
Formulation:	Rabbit IgG, 1mg/ml in PBS with 0.02% sodium azide, 50% glycerol, pH7.2.
Concentration:	1mg/ml
Conjugation:	Unconjugated
Storage:	Store at 4°C short term. Aliquot and store at -20°C long term. Avoid freeze-thaw cycles.
Stability:	1 year
Predicted Protein Size:	~ 120 kDa
Gene Name:	nuclear factor kappa B subunit 2
Database Link:	Entrez Gene 4791 Human Q00653
Background:	Transcription factors of the nuclear factor κB (NF-κB)/Rel family play a pivotal role in inflammatory and immune responses. There are five family members in mammals: RelA, c-Rel, RelB, NF-κB1 (p105/p50), and NF-κB2 (p100/p52). Both p105 and p100 are proteolytically processed by the proteasome to produce p50 and p52, respectively. Rel proteins bind p50 and p52 to form dimeric complexes that bind DNA and regulate transcription. In unstimulated cells, NF-κB is sequestered in the cytoplasm by IκB inhibitory proteins. NF-κB-activating agents can induce the phosphorylation of IκB proteins, targeting them for rapid degradation through the ubiquitin-proteasome pathway and releasing NF-κB to enter the nucleus where it regulates gene expression. NIK and IKKα (IKK1) regulate the phosphorylation and processing of NF-κB2 (p100) to produce p52, which translocates to the nucleus.

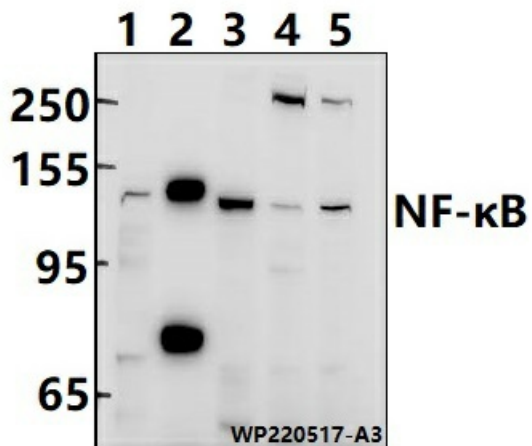


[View online »](#)

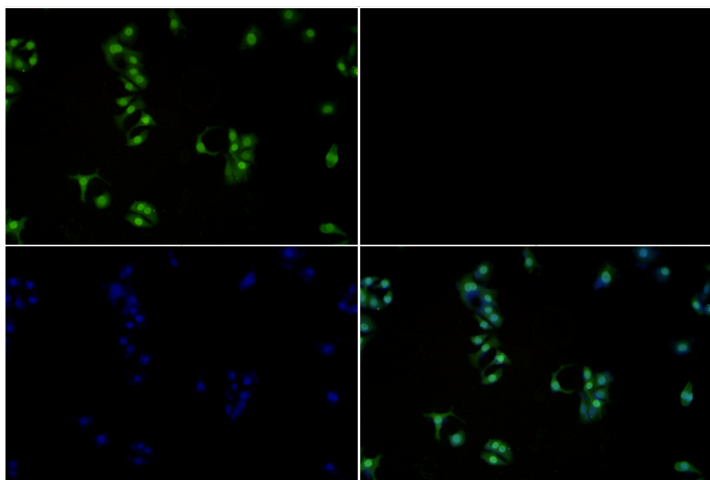
Synonyms: DNA-binding factor KBF2; H2TF1; Lymphocyte translocation chromosome 10 protein; Lyt10; Nuclear factor NF-kappa-B p52 subunit; Nuclear factor NF-kappa-B p100 subunit; Nuclear factor of kappa light polypeptide gene enhancer in B-cells 2; Oncogene Lyt-10

Note: For research use only, not for use in diagnostic procedure.

Product images:



Western blot (WB) analysis of NF-κB p100 polyclonal antibody at 1:1000 dilution
 Lane1:HepG2 whole cell lysate(40ug) Lane2:The Kidney tissue lysate of Rat(40ug) Lane3:A549 whole cell lysate(40ug) Lane4:PC12 whole cell lysate(40ug) Lane5:BV2 whole cell lysate(40ug)



Immunofluorescence analysis of A549 cells using NF-κB p100 antibody at dilution of 1:50.